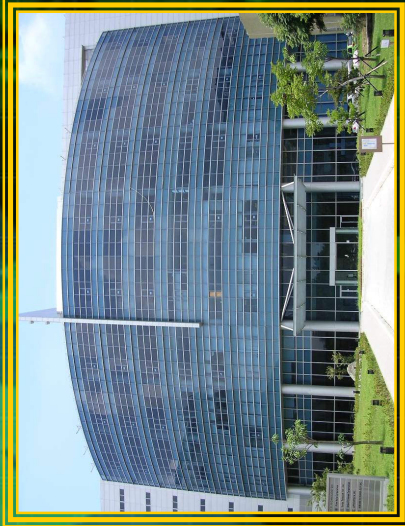


Welcome

YTEC Company Profile

Welcome



YTEC YoungTek Electronics Corp.

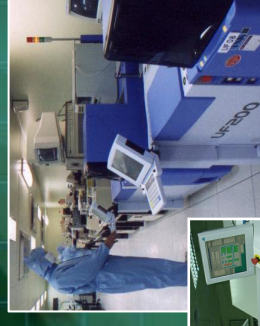
Page:1

YoungTek Electronics Corp.

Stock No: 6261

Brief Introduction

Date : 12 January, 2010



Contents

YTEC Company Profile

- **Brief Introduction**
- **Factory Overview**
- **Company Milestone**
- **Organization Chart**
- **Company Management Concept**
- **OEM Services**
- **R&D Roadmap and Own Product Development**
- **Revenue Growth**
- **Company Mission**



Brief Introduction

YTEC Company Profile

Found Time : 1991/July

Chairman : Bily Wang

President of Service Group : Jeff Chang

President of Own Product Group : Glen Chen

Employees : 821

Capital : NTD 940 million (USD 29 million)

Address : **Plant 1(1F~5F)** : Special & substrate sawing

An Ping Plant (3F) : LED sorting

Li Hsin Plant (2F~3F) : LED back-end turn-key service,AOI

King Sun Plant (7F) : Wafer grinding, sawing & die-sorting

SBIP Plant (1~4F、7F) : IC testing (CP & FT), ATE&GPS

Business Items :

1. Semiconductor and LED OEMs: Wafer sawing, grinding, sorting and IC testing, LED testing, laser scribing, sorting and substrate sawing.


2. Design, manufacture and sales of semiconductor equipments: CIS/CCM equipments, AOI system, full-function IC tester, logic IC tester, analog IC tester, **LED** tester, prober and sorter.



Factory Overview

YTEC Company Profile


SBIP Plant



7F
4F
1F

Diagram showing a vertical stack of three floor level boxes: 7F, 4F, and 1F. A double-headed arrow connects the 4F and 1F boxes.

Plant #1




5F
1F

Diagram showing a vertical stack of two floor level boxes: 5F and 1F. A double-headed arrow connects the two boxes.




King-Sun Plant



7F

Diagram showing a vertical stack of floor level boxes: 7F, followed by two dashed boxes, and another dashed box at the bottom.


Li-Hsin Plant



3F
2F

Diagram showing a vertical stack of floor level boxes: 3F, 2F, and two dashed boxes.

An-Ping Plant



3F

Diagram showing a vertical stack of floor level boxes: 3F, and two dashed boxes.



Company Milestone

YTEC Company Profile

- 1991/July.** YTEC was founded and the capital is NTD \$ 5 million.
- 1998/Oct.** Developed logic tester (Goblin) with 5 MHz/40 pins.
- 2000/Mar.** Achieved ISO 9001 certification.
- 2000/July.** Full-function IC tester was verified by industry agency with predominant product development project.
- 2002/Aug.** SEC (Securities and Exchange Commission) approved YTEC to public stock.
- 2003/Nov.** LED OEM service was established.
- 2003/Dec.** Obtain OTC certification.
- 2004/Mar.** Got approval to establish a branch in Hsin chu SBIP.
- 2004/Mar.** Listed on Taiwan stock exchange. (Stock No.: 6261)
- 2006/Apr.** Developed King Sun plant for wafer grinding & sawing.
- 2006/Dec.** Achieved ISO 14001 certification & OHSAS 18001.
- 2007/Jul.** Developed Tainan An Ping plant for LED sorting.
- 2007/Nov.** Build up AOI key technologies and business.
- 2008/May** Develop Li Hsin plant for LED test & sorting.
- 2008/Otc.** Achieved the certification of ISO/TS 16949.
- 2009/Jun.** Solar silicon substrate inspection system was verified by Science Park Administration with development project.



Organization Chart



Company Management Concept

YTEC Company Profile

經營理念：(Management Concept)

主人翁經營理念；下工程即是客戶。

Treat YTEC as your own company. (Host concept)

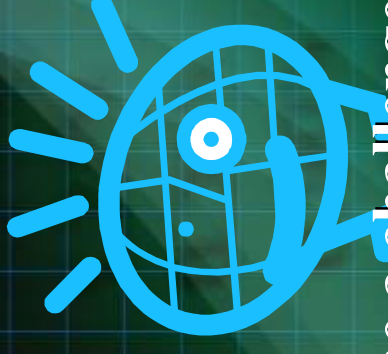
Treat all post projects and processes as our customers.

工作態度：(Working Attitude)

成功者找方法；失敗者找藉口。

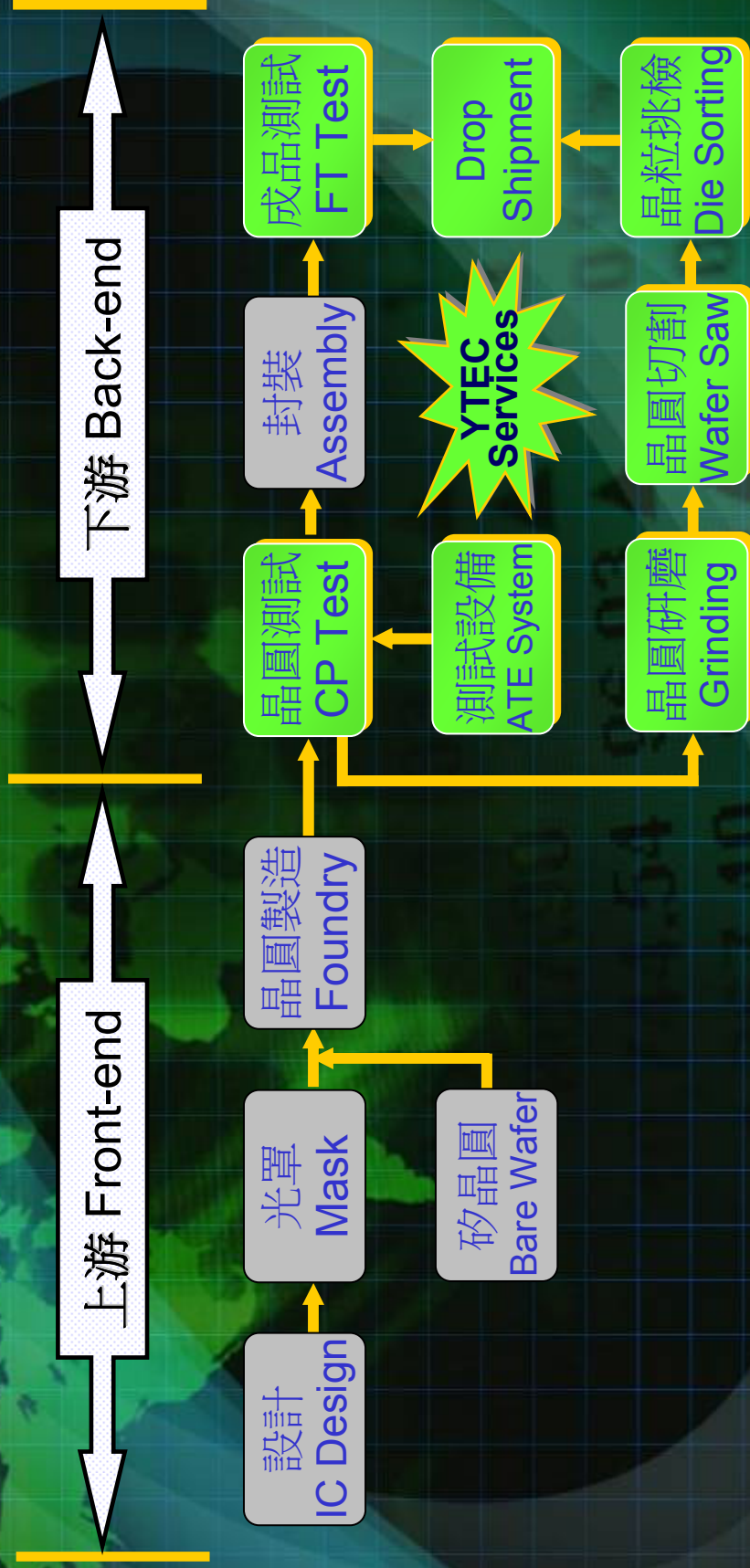
A successful person will find the way to overcome a challenge

Loser finds excuses.



IC OEM Services

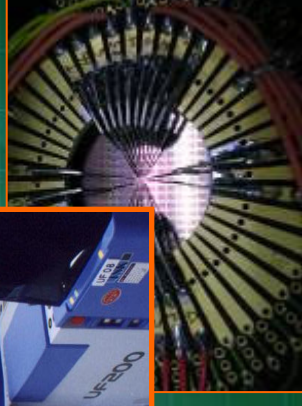
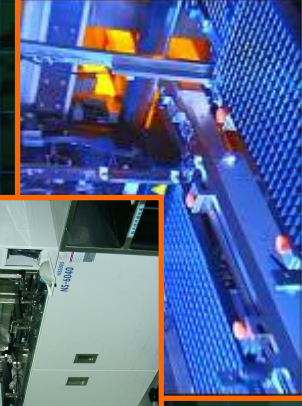
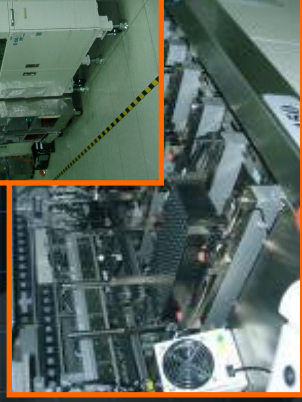
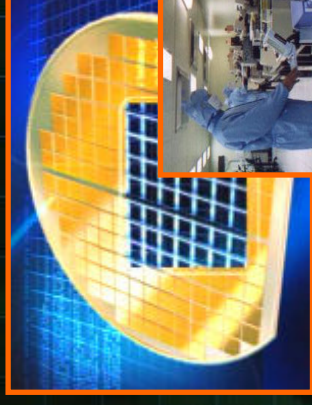
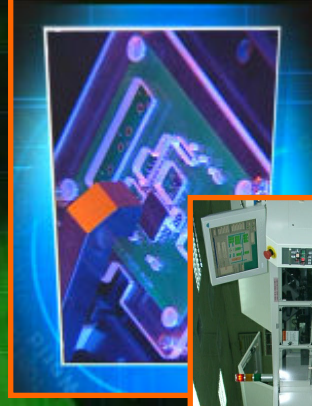
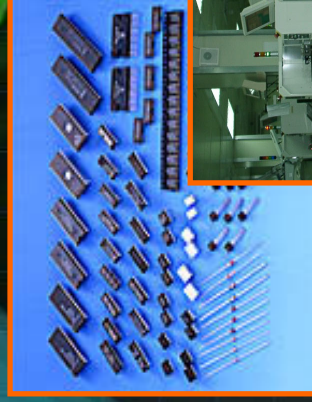
YTEC Company Profile



專業測試代工服務(IC Testing OEM)

YTEC Company Profile



- ❑ 4"~8" Wafer testing (CP)、Test program and test kit development (Probe-card design and manufacture).
- ❑ IC packaging testing (FT)、Package type : DIPs、T/SOPs、L/QFPs、QFN、L/BGA...
- ❑ PC peripheral product、Logic、Analog、Mixed-signal、No-volatile memory、MCU、LCD driver IC、High speed/ High pin count (Scud-1A 512C) testing.
- ❑ CIS(CMOS Image Sensor)、RF、SoC product testing.
- ❑ Others : Laser trimming、Lead scanning、Test program and test kit development technical support, Turn-key service (For example: PKG assembly、Tape-reel、Drop-shipment...).



研磨、切割及挑檢代工服務(Grinding, Sawing, P&P Service)

YTEC Company Profile

- Service Items:
Wafer back-side grinding, sawing, chip pick & place services for Consumer and gold bump products.

Process	Back-side Grinding	Sawing	Pick & Place
Environment			
Capability	<p>Class 1K</p> <ul style="list-style-type: none"> 4"~12" Wafer Back-side Grinding 8"~12" Wafer Polish Solution Wafer TTV $\leq 5 \mu\text{m}$ Chip TTV $\leq 2 \mu\text{m}$ 	<p>Class 1K</p> <ul style="list-style-type: none"> 4"~12" Wafer Sawing Dual Cutting Function High-pressure & Atomizing Cleaning System (二流體清洗裝置) Dust Collecting System 	<p>Class 100</p> <ul style="list-style-type: none"> 4"~12" Wafer Pick & Place Map and Ink Pick & Place Solution Chip Back-side AOI Inspection System

LED OEM Services

YTEC Company Profile



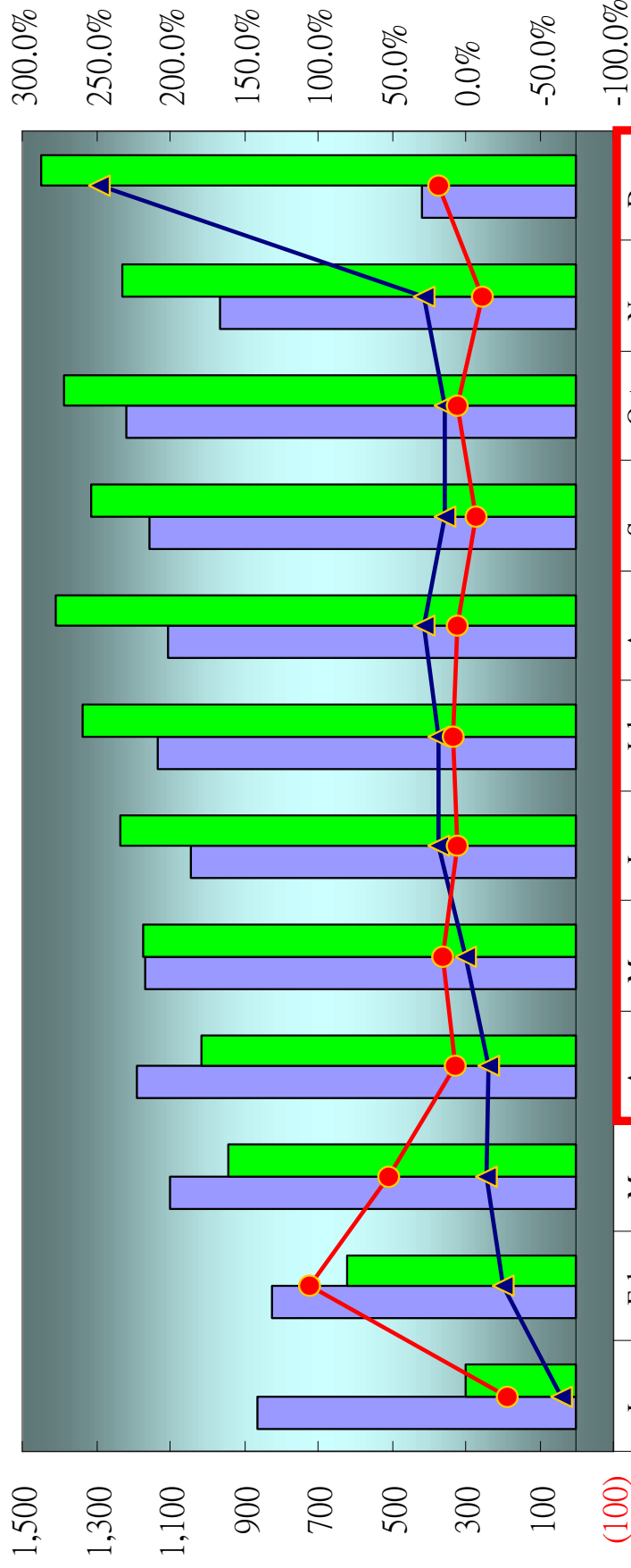
- **Front-end Product** : Wafer, Epi-Wafer, For example GaAs, GaAsP, AlGaAs, AlGaInP
- **Mid-end Product** : Laser Scribing, Wafer Testing and Pick & Place Die-sorting
- **Back-end Product** : Lamp, Display, SMD, IR transmission module, Optical Communication product, Substrate Saw



2008/2009 LED Sorting Output

久元電子公司簡報

Unit(KK)



R&D Roadmap and Own Product Development

Own Product Development

YTEC Company Profile

- Scud-1A 512C full-function IC Tester
- CIS(CMOS Image Sensor System)
CMOS影像感測系統
- HV LED Tester
- CCM (CMOS/Compact Camera Module)
影像感測模組測試設備
- AOI (Auto optical Inspection)
自動光學檢測系統

Scud-1A full-function IC tester

YTEC Company Profile

Scud-1A development history(發展原因):

For increased sales of consumer electronic and computer products, pushing chipsets forward to high frequency, lots of pins, multi-function and mixed signals. **The demand of testing equipment has increased substantially.**

Scud-1A technology features(技術特點):

- High-speed signal processing ability.
- High testing output performance
- Large coverage of product types
- Enable to expand test functions
- Occupies a small space
- Stable testing
- Perfect operation interface platform
- Provides statistic reports for mass production
- Developed for testing ease of operation.

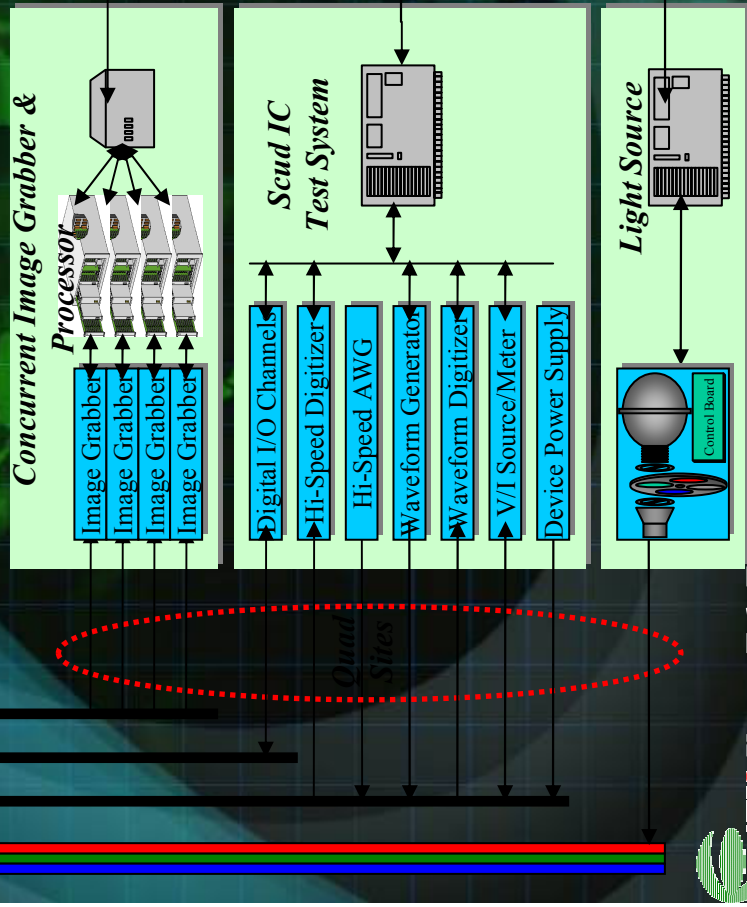
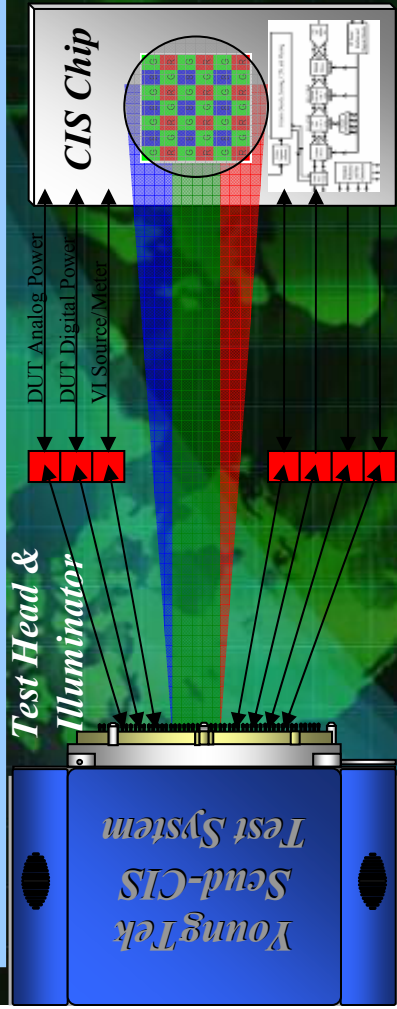
Scud-1A development advantage(發展優勢):

- The price is only 30% of the foreign price to reduce the company capital expenditure.
- The assembly components are flexible and can be adjusted to the customer's requirement.
- A more complete understanding of the equipment by the Employee reduces operational mistakes and repairing costs.
- Tighter cost control and the competitive price will contribute to maintain profit growth.



CIS(CMOS Image Sensor) IC Tester

YTEC Company Profile



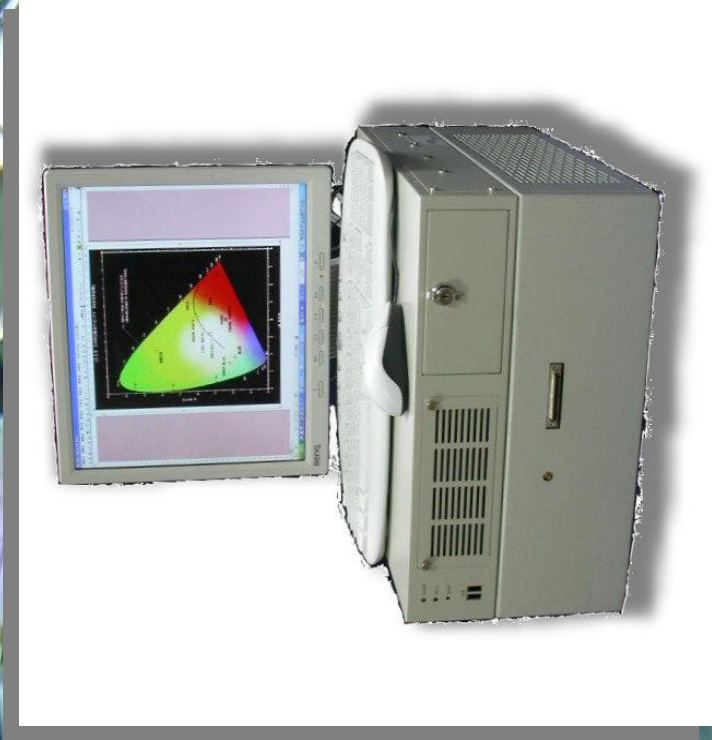
Host Computer



HV LED Tester

YTEC Company Profile

☐ YTSD01 -> YTSD02 -> YTEC 8000 HV LED Tester



CCM(CMOS/Compact Camera Module)

YTEC Company Profile

CCM Test System YT3100

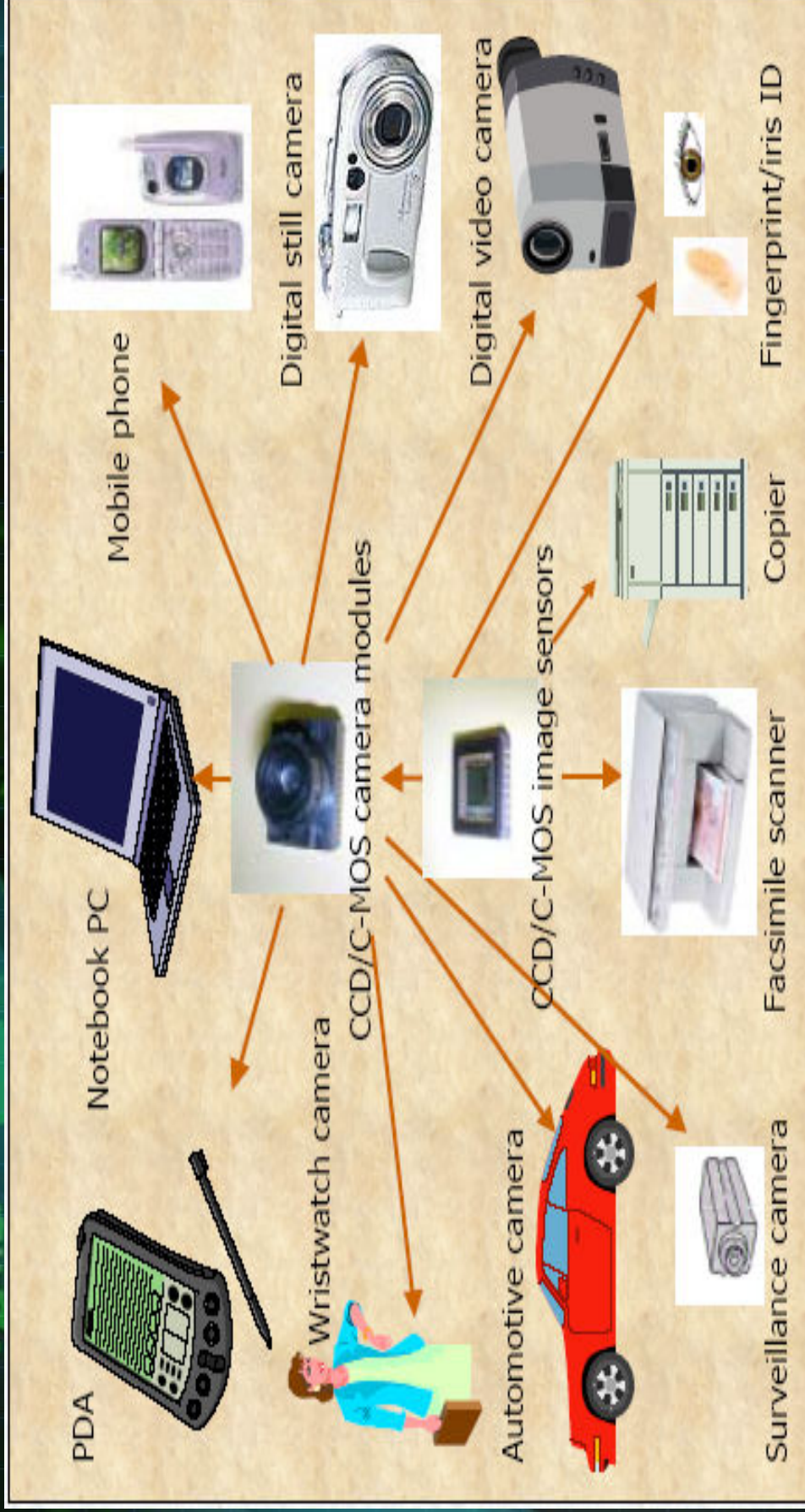


Fully Auto CCM Test System YT3300



CIS IC /CCM Application

YTEC Company Profile



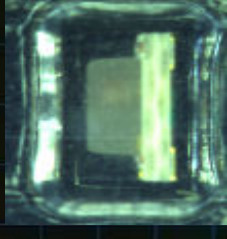
Consumer -, communication -, security management -, QA -, Automotive -, and Personal management tools...etc are using the CIS IC in our daily lives.



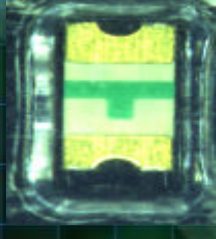
Auto Optical Inspection (自動光學檢測系統)

YTEC Company Profile

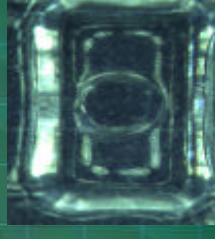
YT 2200 REEL TYPE COMPONENTS AOI system



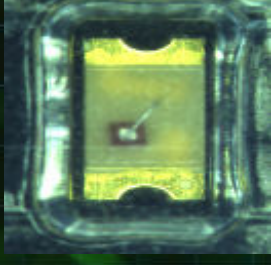
Tilt



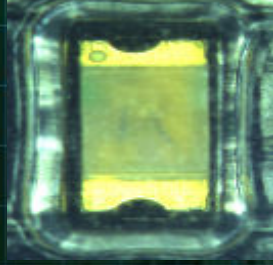
Over turn



Empty



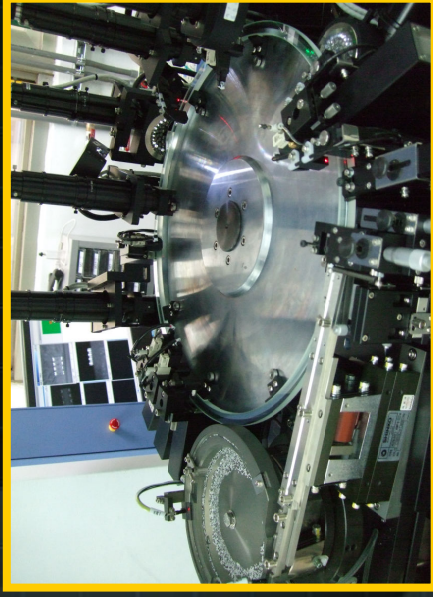
Polarity inverse
package



Mixed
package

Auto Optical Inspection Application

YTEC Company Profile



Reel type taped products:

- Resistor
- Capacitor
- Inductor
- LED
- IC
- Relay
- Connector
- Fuse



Promotion History



SEMICON® in Taiwan/China/Germany/USA 2001~2009

- ❑ 2001/09 Full function IC tester joined the SEMICON Taiwan 2001 Exhibition in Taipei
- ❑ 2002/03 Provided the SoC Test concept by joining the SEMICON China 2002 Exhibition in Shanghai
- ❑ 2002/04 Full function IC Tester joined the 1st Taiwan Semiconductor Equipment Exhibition
- ❑ 2002/09 Seud IC joined the SEMICON Taiwan 2002 Exhibition
- ❑ 2003/09 Seud-256C&512D IC joined the SEMICON Taiwan 2003 Exhibition
- ❑ 2004/03 IC test system joined the SEMICON China 2004 Exhibition in Shanghai
- ❑ 2004/09 Seud-1A & CIS IC tester joined the SEMICON Taiwan 2004 Exhibition in Taipei
- ❑ 2005/03 IC test system joined the SEMICON China 2005 Exhibition in Shanghai
- ❑ 2005/03 GPS product joined the CeBIT show in Germany for European market promotion
- ❑ 2007/01 GPS product joined the CeBIT show in Las Vegas for U.S. and Global market promotion
- ❑ 2007/03 GPS product joined the CeBIT show in Germany for European market promotion.
- ❑ 2007/04 GPS product joined the Taipei vehicle uses the electronic exhibition
- ❑ 2008/06 AOI joined the OPTO Taiwan 2008 Exhibition in Taipei
- ❑ 2009/06 AOI joined the OPTO Taiwan 2009 Exhibition in Taipei
- ❑ 2009/09 AOI joined the OPTO China 2009 Exhibition in Shenzhen



Revenue Growth

2007&2008 Monthly Revenue

YTEC Company Profile

NTS(Thousand)

Business Item/Month	Jan.	Feb.	Mar.	Apr.	May	Jun.	Jul.	Aug.	Sep.	Oct.	Nov.	Dec.	Total	比重%	
切削/檢驗代工 Sawing & Sorting OEM	2007	48,079	40,951	56,036	56,131	55,632	69,403	77,443	76,803	83,443	76,102	73,637	769,409	41.66%	
	2008	69,026	62,166	81,872	78,021	80,642	83,769	83,520	83,767	86,226	62,323	34,533	883,440	43.00%	
	YoY	43.57%	51.81%	46.11%	39.00%	44.65%	39.44%	20.70%	7.85%	9.07%	3.34%	-18.11%	-53.10%	14.82%	--
	MoM	-6.26%	-9.94%	31.70%	-4.70%	3.36%	-3.80%	7.98%	-0.30%	0.30%	2.94%	-27.72%	-44.59%	--	--
測試代工 Testing OEM	2007	68,955	42,345	63,800	62,094	72,758	83,930	92,522	85,319	98,774	79,363	68,874	886,233	47.98%	
	2008	72,193	73,211	88,159	94,482	95,237	96,280	90,378	90,417	83,946	54,739	35,238	966,611	47.05%	
	YoY	4.70%	72.89%	38.18%	52.16%	30.90%	36.79%	14.71%	-2.32%	5.98%	-15.01%	-31.03%	-48.84%	9.07%	--
	MoM	4.82%	1.41%	20.42%	7.17%	0.80%	-3.05%	4.28%	-6.13%	0.04%	-7.16%	-34.79%	-35.63%	--	--
機器組裝等產品銷售 Own Product Sales	2007	7,848	23,419	10,947	7,867	7,329	4,786	10,120	11,535	12,664	52,442	34,633	191,435	10.36%	
	2008	8,562	4,187	9,416	24,083	59,551	8,607	8,999	20,839	33,332	8,547	5,740	12,699	204,562	9.96%
	YoY	9.10%	-82.12%	-13.99%	206.13%	712.54%	9.71%	88.03%	105.92%	188.96%	-32.51%	-89.05%	-63.33%	6.86%	--
	MoM	-75.28%	-51.10%	124.89%	155.77%	147.27%	-85.55%	4.55%	131.57%	59.95%	-74.36%	-32.84%	121.24%	--	--
營業收入淨額 (Unit:K) Sales Revenue (Net)	2007	124,882	106,715	130,783	126,092	135,836	130,976	158,119	180,085	173,657	194,881	207,907	177,144	1,847,077	100.0%
	2008	149,781	139,564	179,447	196,586	235,430	178,513	189,048	194,737	207,516	178,719	122,802	82,470	2,054,613	100.0%
	YoY	19.94%	30.78%	37.21%	55.91%	73.32%	36.29%	19.56%	8.14%	19.50%	-8.29%	-40.93%	-53.44%	11.24%	--
	MoM	-15.45%	-6.82%	28.58%	9.55%	19.76%	-24.18%	5.90%	3.01%	6.56%	-13.88%	-31.29%	-32.84%	--	--
營業收入淨額(累計) Sales Revenue (Total)	2007	124,882	231,597	362,380	488,472	624,308	755,284	913,403	1,093,488	1,267,145	1,462,026	1,669,933	1,847,077	--	--
	2008	149,781	289,345	468,792	665,378	900,808	1,079,321	1,268,369	1,463,106	1,670,622	1,849,341	1,972,143	2,054,613	--	--
	YoY	19.94%	24.93%	29.36%	36.22%	44.29%	42.90%	38.86%	33.80%	31.84%	26.49%	18.10%	11.24%	--	--
	MoM	117,034	83,296	119,836	118,225	128,507	123,131	153,333	169,965	162,122	182,217	155,465	142,511	1,655,642	--
總計代工成長 OEM Growth (Total)	2007	141,219	135,377	170,031	172,503	175,879	169,906	180,049	174,184	170,172	117,062	69,771	1,850,051	--	
	2008	20,666	62,533	41,899	45,916	36,866	37,999	17,422	2,311	7,444	-6,611	-24,700	-51,040	11,740	--
	YoY	-0.91%	-4.14%	25.60%	1.45%	1.96%	-3.40%	5.97%	-3.42%	0.16%	-2.30%	-31.21%	-40.40%	--	--
	MoM	--	--	--	--	--	--	--	--	--	--	--	--	--	--

註：(e)表示預估值(estimate)。

2008&2009 Monthly Revenue

YTEC Company Profile

NTS(Thousand)

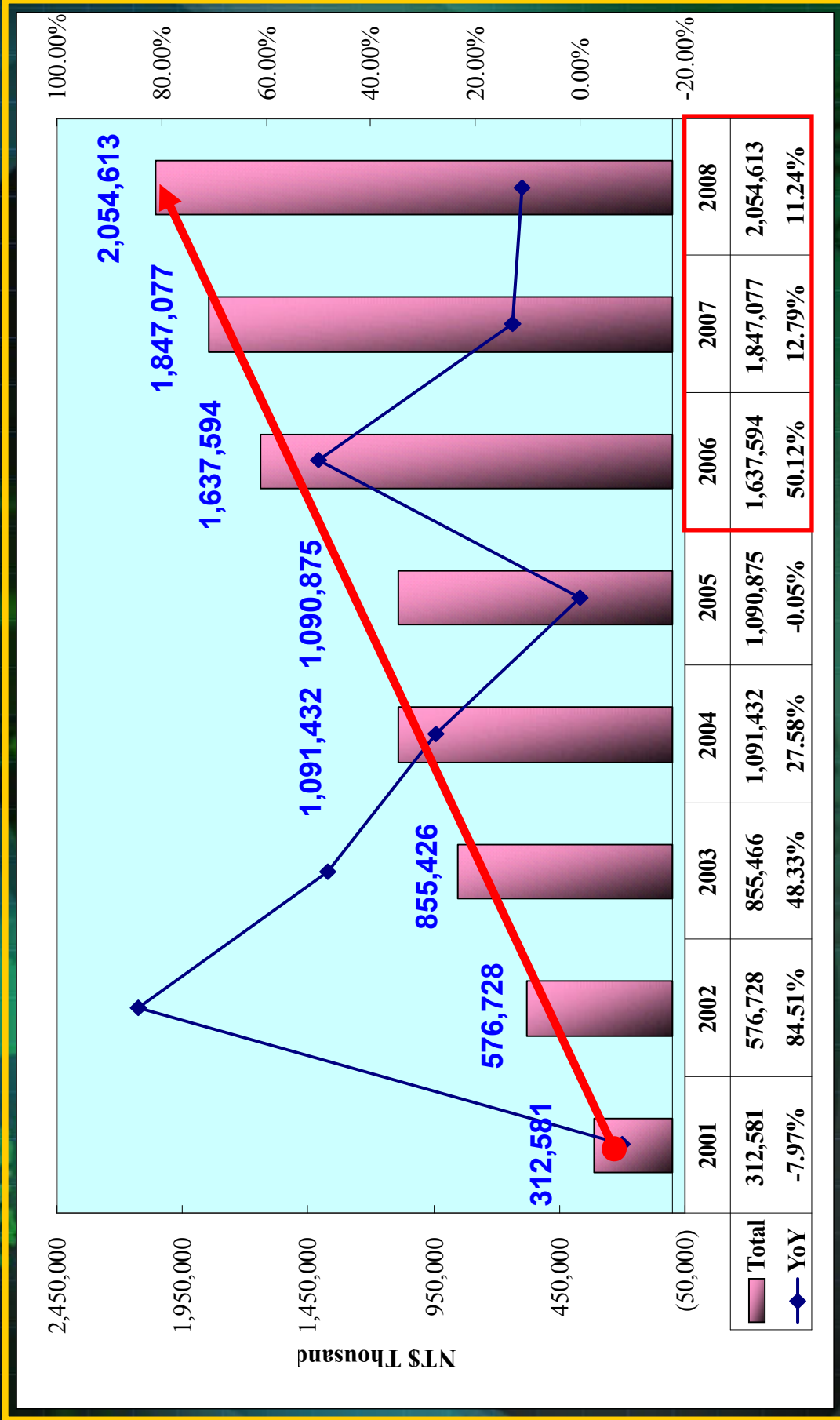
Business Item/Month	Jan.	Feb.	Mar.	Apr.	May	Jun.	Jul.	Aug.	Sep.	Oct.	Nov.	Dec.	Total	Share(%)	
切替部品檢代工 Sawing & Sorting OEM	2008	69,026	62,166	81,872	78,021	80,642	83,769	83,520	83,767	86,226	62,323	34,533	883,440	43.00%	
	2009	25,665	40,289	54,376	61,140	71,468	86,175	92,179	92,277	89,220	84,948	93,082	868,783	43.76%	
	YoY	-62.82%	-35.19%	-33.58%	-21.64%	-11.38%	0.50%	2.87%	10.37%	10.16%	3.47%	36.30%	169.55%	-1.66%	
測試代工 Testing OEM	MoM	-25.68%	56.98%	34.96%	12.44%	16.89%	9.09%	10.53%	0.11%	-3.31%	-4.79%	9.58%			
	2008	72,193	73,211	88,159	94,482	95,237	92,331	96,280	90,417	83,946	54,739	35,238	966,611	47.05%	
	2009	27,681	33,471	51,839	62,960	73,907	82,856	87,349	82,376	95,383	88,814	82,815	84,392	853,843	43.01%
機器組裝等產品銷 售 Own Product Sales	YoY	-61.66%	-54.28%	-41.20%	-33.36%	-22.40%	-10.26%	-9.28%	5.49%	5.80%	51.29%	139.49%	-11.67%		
	MoM	-21.45%	20.92%	54.88%	21.45%	17.39%	12.11%	5.42%	15.79%	-6.89%	-6.75%	1.90%			
	2008	8,562	4,187	9,416	24,083	59,551	8,607	8,999	20,839	33,332	8,547	5,740	12,699	204,562	9.96%
營業收入淨額 (Unit:K) Sales Revenue (Net)	2009	2,666	5,496	9,529	7,812	7,505	27,554	5,842	86,434	71,320	6,554	23,240	262,530	13.22%	
	YoY	-68.86%	31.26%	1.20%	-67.56%	-87.40%	220.13%	-35.08%	-58.84%	159.31%	734.44%	14.18%	83.01%	28.34%	
	MoM	-79.01%	106.15%	73.38%	-18.02%	-3.93%	267.14%	-78.80%	46.83%	907.62%	-17.49%	-90.81%	254.59%		
營業收入淨額(累計) Sales Revenue (Total)	2008	149,781	139,564	179,447	196,586	235,430	178,513	189,048	194,737	178,719	122,802	82,470	2,054,613	100.0%	
	2009	56,012	79,256	115,744	131,912	152,880	188,374	179,366	183,133	274,094	249,354	174,317	200,714	1,985,156	100.0%
	YoY	-62.60%	-43.21%	-35.50%	-32.90%	-35.06%	5.52%	-5.12%	-5.96%	32.08%	39.52%	41.95%	143.38%	-3.38%	
總計代工成長 OEM Growth (Total)	MoM	-32.08%	41.50%	46.04%	13.97%	15.90%	23.22%	-4.78%	49.67%	-9.03%	-30.09%	15.14%			
	2008	149,781	289,345	468,792	665,378	900,808	1,079,321	1,268,369	1,463,106	1,670,622	1,849,341	1,972,143	2,054,613	--	
	2009	56,012	135,268	251,012	382,924	535,804	724,178	903,544	1,086,677	1,360,771	1,610,125	1,784,442	1,985,156	--	
YoY	YoY	-62.60%	-53.25%	-46.46%	-42.45%	-40.52%	-32.90%	-28.76%	-25.73%	-12.94%	-9.52%	-3.38%			
	2008	141,219	135,377	170,031	172,503	175,879	169,906	180,049	173,898	174,184	170,172	117,062	69,771	1,850,051	--
	2009	53,346	73,760	106,215	124,100	145,375	160,820	173,524	174,555	187,660	178,034	167,763	177,474	1,722,626	--
YoY	YoY	-62.22%	-45.52%	-37.53%	-28.06%	-17.34%	-5.35%	-3.62%	7.74%	4.62%	43.31%	154.37%	-6.89%		
	MoM	-23.54%	38.27%	44.00%	16.84%	17.14%	10.62%	7.90%	7.51%	-5.13%	-5.77%	5.79%			

註：(e)表示預估值(estimate)。



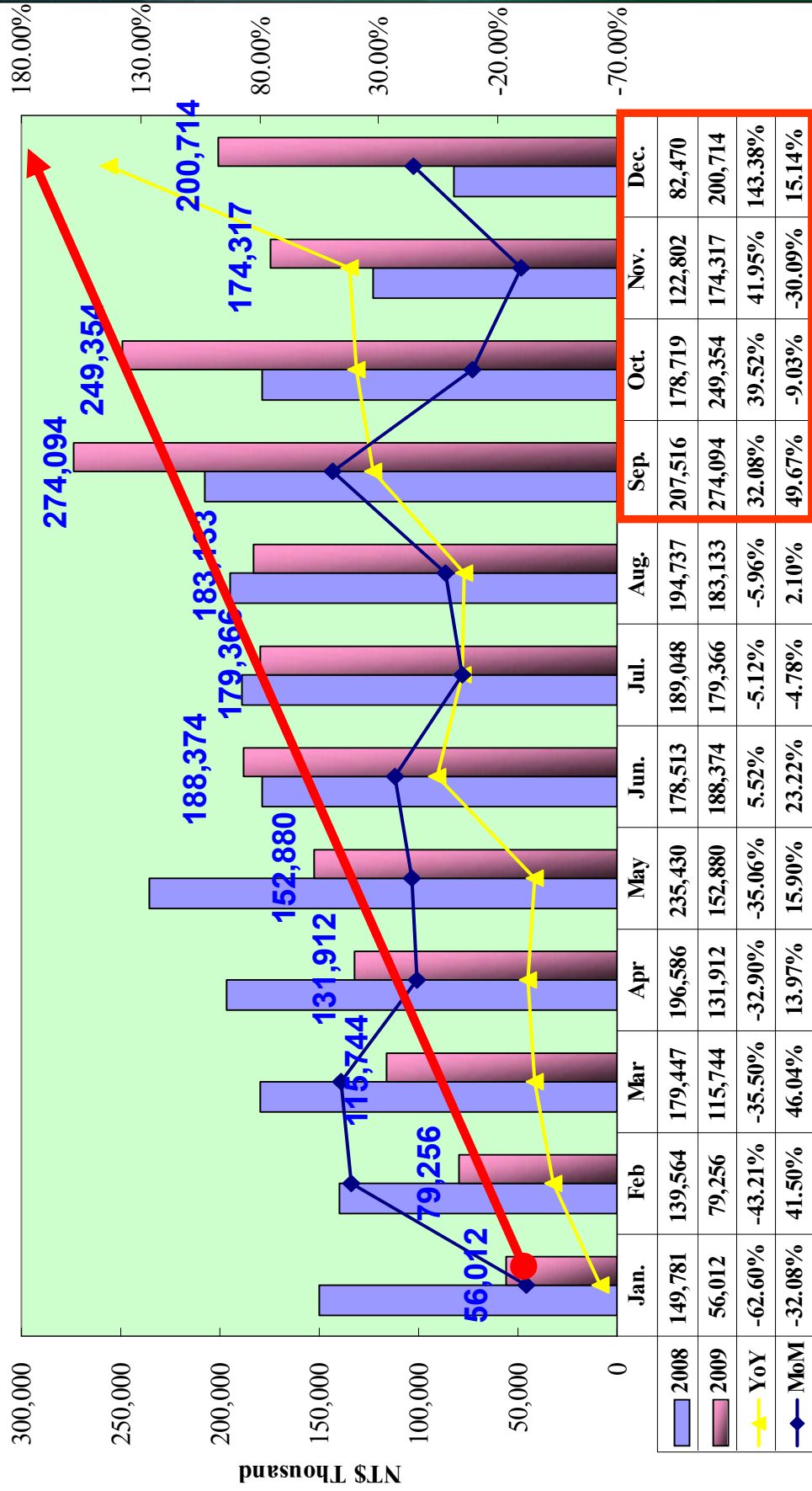
2008/2009 Revenue Growth

YTEC Company Profile



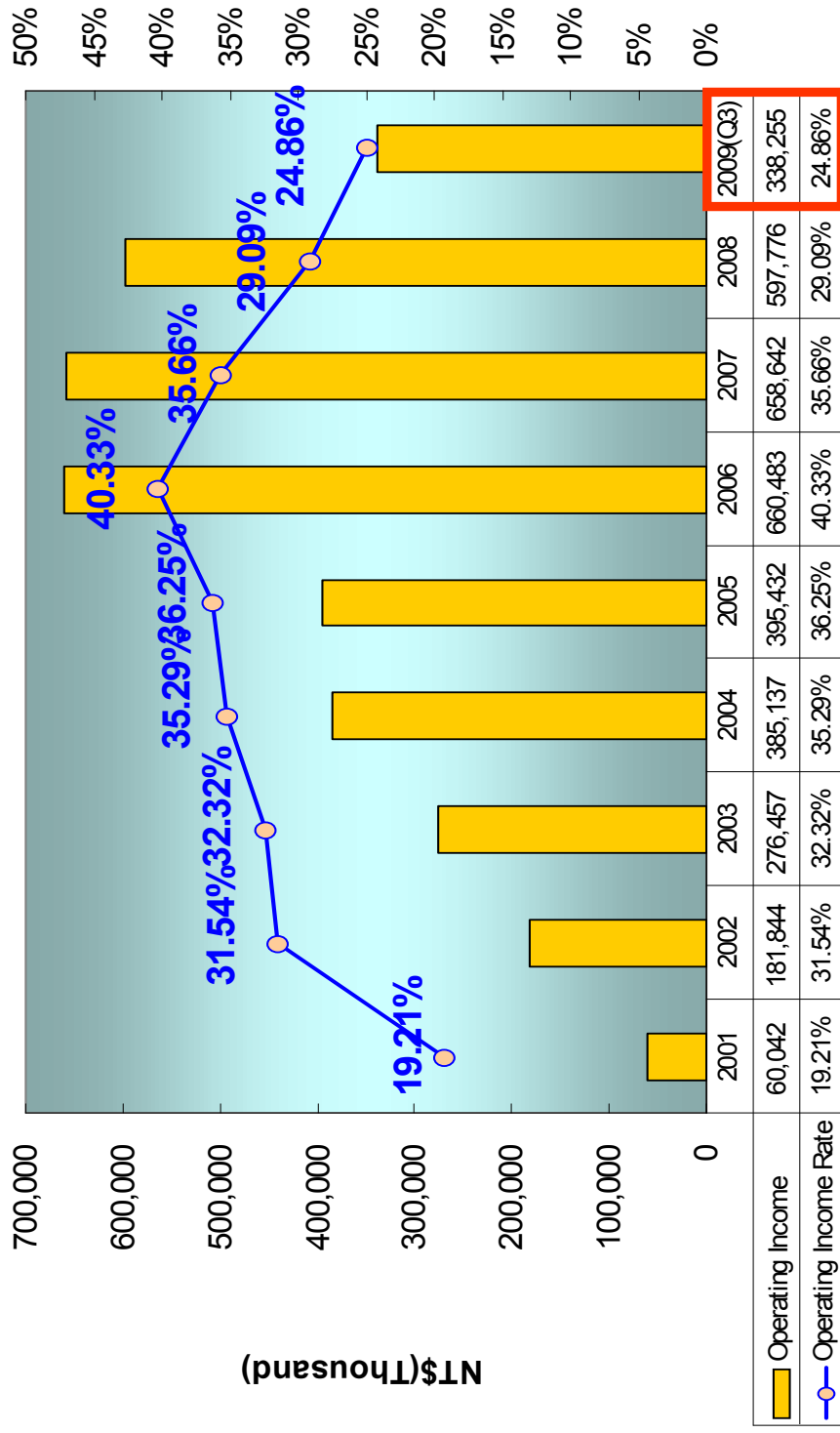
2008/2009 Revenue Growth

YTEC Company Profile



2001~2009 Operating Income

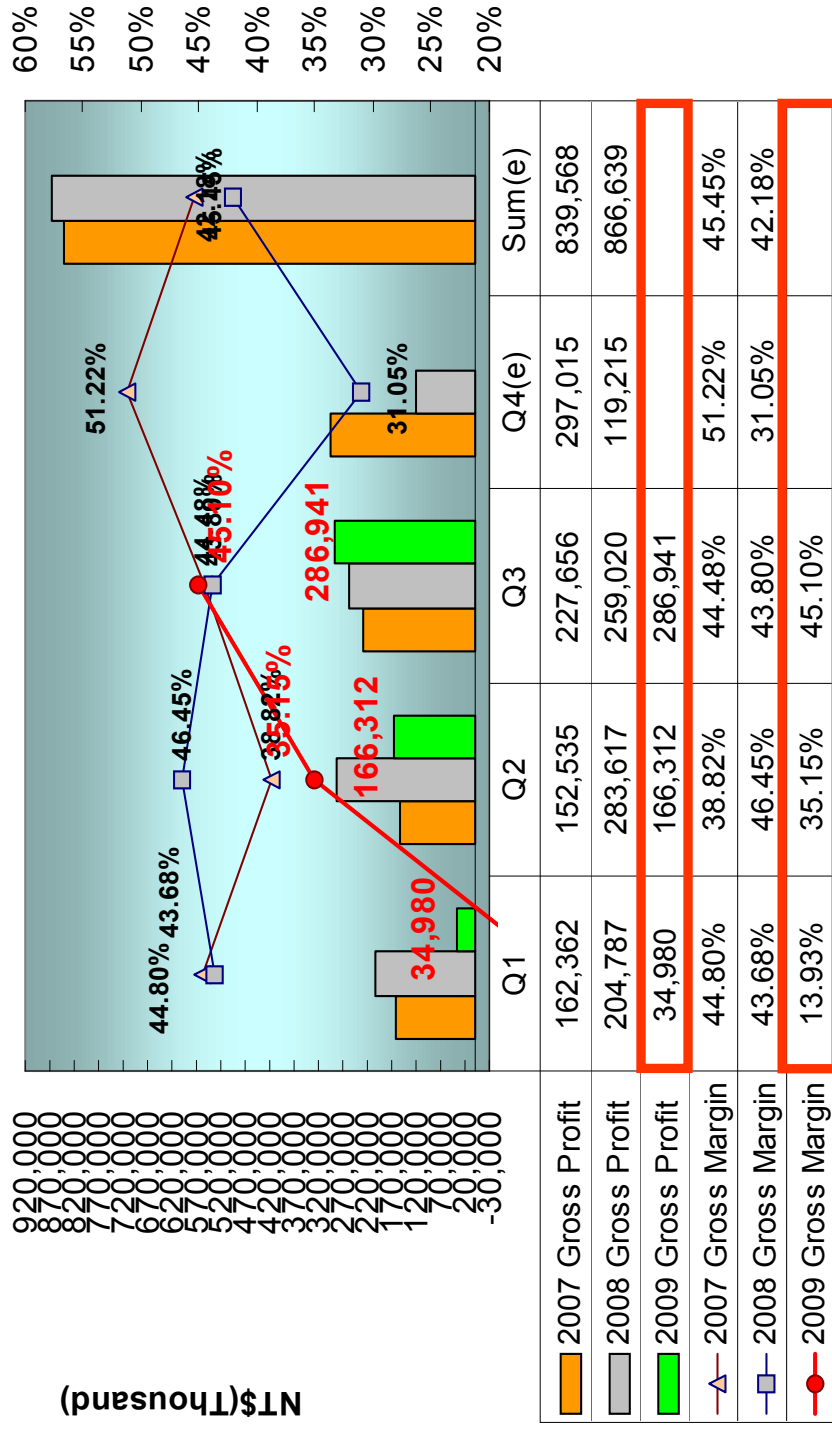
YTEC Company Profile



註：(e)表示預估值(estimate)。
 YTEC YoungTek Electronics Corp.

2008/2009 Gross Profit

YTEC Company Profile



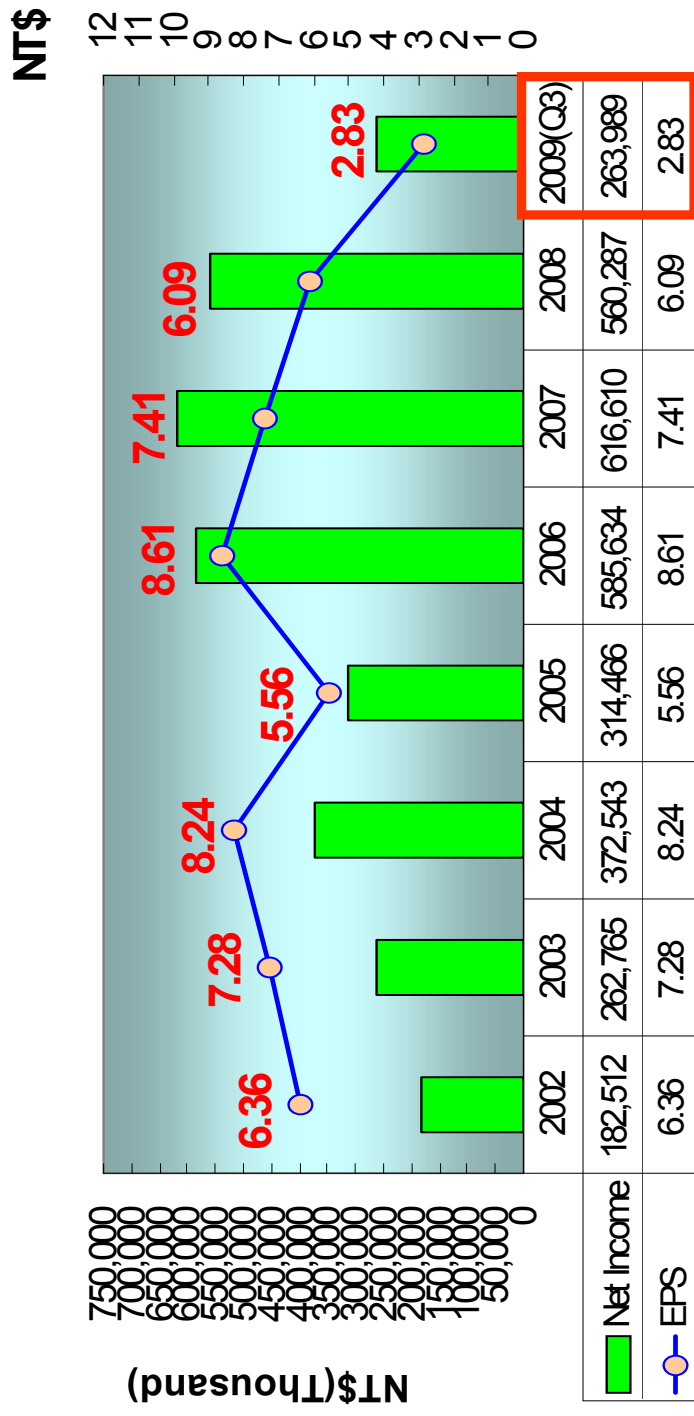
NT\$(Thousand)

20,000
170,000
140,000
110,000
80,000
50,000
20,000
0
-10,000
-20,000
-30,000

註：(e)表示預估值(estimate)。
YTEC YoungTek Electronics Corp.

Yearly Net Income & EPS

YTEC Company Profile



Share payout composition and history

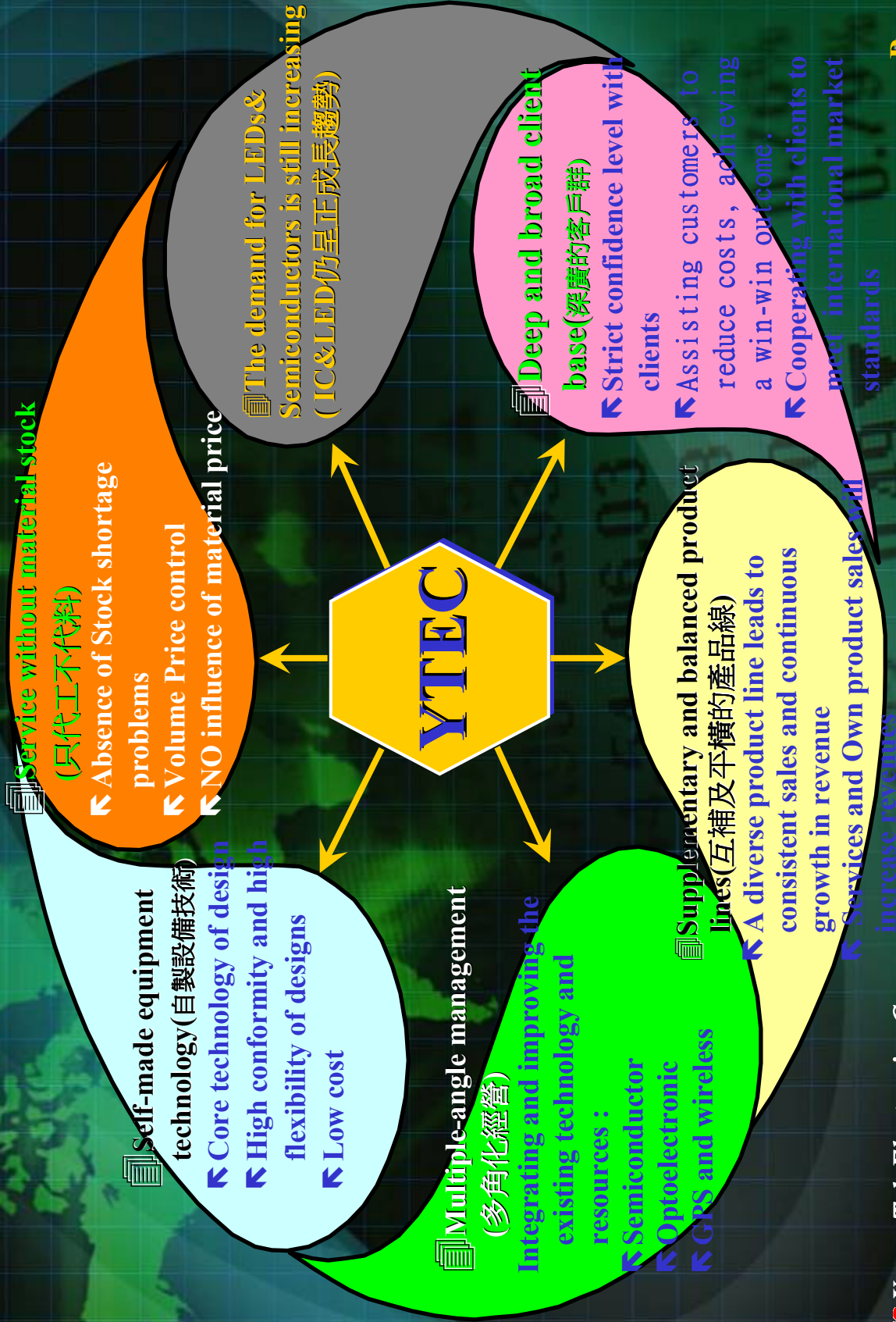
YTEC Company Profile

Share payout composition and history

Year	九十二年 (2003)	九十三年 (2004)	九十四年 (2005)	九十五年 (2006)	九十六年 (2007)	九十七年 (2008)	九十八年 (2009)
	分配九十一年 Profit(2002)	分配九十二年 Profit(2003)	分配九十三年 Profit(2004)	分配九十四年 Profit(2005)	分配九十五年 Profit(2006)	分配九十六年 Profit(2007)	分配九十七年 Profit(2008)
Cash(NTD)	2.00	3.00	3.00	2.61	3.99	4.00	3.00
Free Pair stock of profit	2.00	2.00	2.00	0.87	1.00	0.50	0.10
Capital reserve fund	--	--	--	--	--	--	--
EPS(NTD)	6.36	7.28	8.24	5.56	8.61	7.41	6.09

Company competitive advantages

YTEC Company Profile

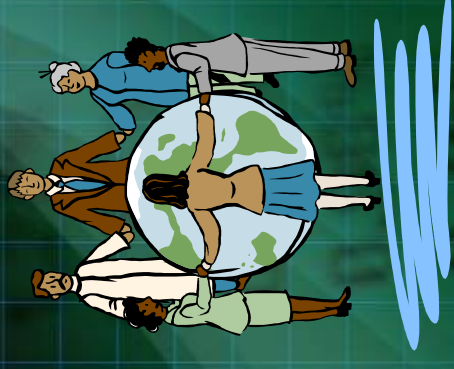


公司願景Company Mission

YTEC Company Profile

著眼於國內外市場的開拓，讓久元成為立足台灣的整合性後段IC代工服務廠，並朝放眼世界的自有產品、自有品牌邁進。

Based on the domestic and international marketing development, YTEC has gotten a foothold as an integrated back-end IC OEM factory. YTEC moves forward, with it's own products, and Own Bench Marks.



Q & A

YTEC Company Profile

Thank you very much

