

Welcome



Welcome



Brief Introduction

March 29th, 2016



2016 VISIT SCHEDULE @久元

Company Profile

Contents

Time

- | | |
|---|-------------|
| <input type="checkbox"/> Brief Introduction of YTEC | 14:00~14:20 |
| <input type="checkbox"/> Q & A | 14:20~15:30 |
| <input type="checkbox"/> Line Tour (Free) | 15:30~16:00 |

Contents

Company Profile

- Brief Introduction**
- Factory Overview**
- Company Milestone**
- Company Management Concept**
- OEM Services**
- R&D Roadmap and Own Product Development**
- Revenue Growth**
- Company Mission**

Brief Introduction

Company Profile

Found Time : 1991/July

Chairman : Bily Wang

President of Service Group : Jeff Chang

President of Own Product Group : Glen Chen

Employee : 1125 persons

Capital : NTD 1285million (USD 39.2 million)

Factories : **Plant 1** : Special & substrate sawing

SBIP Plant : IC Back-end turn-key service, ATE&AOI

Chuangsing Plant : IC Final Testing service

Li Hsin Plant : LED Back-end turn-key service

An Ping Plant : LED Testing & sorting

Xiamen Plant : LED Testing & sorting

Changzhou Plant : LED Testing & sorting

Wujiang MightYtek Plant : IC Assembly & Testing

Business Items :

- 1. Semiconductor and LED OEM:** IC testing, wafer sawing, grinding, chip sorting and LED testing, laser scribing, sorting and substrate sawing.
- 2. Design, manufacture and sales of semiconductor equipments:** Full-function IC tester, logic ,analog, Mixed-Signal IC Tester , LED tester, prober and sorter, CCM equipments, AOI system.

Factory Overview

Company Profile

Plant #1



SBIP Plant



Li-Hsin Plant



Chuangsin Plant



An-Ping Plant



Hsinchu

Tainan

Factory Overview

Company Profile

Changzhou YT Plant



WuJiang MightYtek Plant



Xiamen YT Plant



Company Milestone

Company Profile

- 1991/Jul.** YTEC was founded and the capital is NTD \$ 5 million.
- 1998/Oct.** Develop logic tester (Goblin) with 5 MHz/40 pins.
- 2000/Mar.** Achieved the certification of ISO 9001
- 2000/Jul.** Full-function IC tester was verified by Industry Agency with predominant product development project.
- 2002/Nov.** SEC (Securities and Exchange Commission) approve YTEC to public stock.
- 2003/Nov.** LED OEM service was established.
- 2004/Mar.** Got the approval to establish the branch in Hsin chu SBIP.
- 2004/Mar.29** Listed in Taiwan stock exchange. (Stock No.: 6261)
- 2006/Mar.** Signs the cooperation agreement of the IC test system technology. with Agilent Technologies
- 2006/Dec.** Achieved the certification of ISO 14001 and OHSAS 18001.
- 2007/Jul.** Develop Tainan An Ping plant for LED sorting.
- 2008/May** Develop Li Hsin plant for LED test & sorting.
- 2008/Oct.** Achieved the certification of ISO/TS 16949.
- 2009/May.** To establish the Xiamen Young Tek Electronics Co., Ltd. to provide the LED Backend Turn-key service.
- 2009/Jun.** Solar silicon substrate inspection system was verified Science Park Administration with development project.
- 2010/Mar.** Develop SBIP plant for wafer grinding & sawing.
- 2010/Sep.** To establish the Changzhou YoungTek Electronics Co., Ltd. to provide the LED Backend Turn-key service.
- 2011/Jan.** Achieved the certification of IECQ QC080000.
- 2011/Dec.** To establish the WuJiang MightYtek Semiconductor Co., Ltd. to provide the Semiconductor Backend Testing & Ass'y Turn-key service.
- 2012/Feb.** To establish the Shenzhen Clear Rich Tech. Co., Ltd. to provide the Semiconductor Backend Testing service.
- 2012/May.** Signs the cooperation memorandum, the expansion related marketing functions Development with Yoshikawa Semiconductor Co., Ltd.
- 2013.Dec.** Got the 14th Industrial Excellence Award by Ministry of Economic Industry Agency .
- 2015.May.** Development of innovative measuring technique and system for critical dimension inspection on through silicon vias was verified Science Park Administration with development project.
- 2015.Jun.** Develop Chuangsin plant for IC final testing.
- 2015 Aug.** Got the Corporate Social Responsibility Award by CommonWealth Magazine.

Company Management Concept

Company Profile

經營理念：(Management Concept)

主人翁經營理念；下工程即是客戶。

Treat YTEC as your own company. (Host concept)

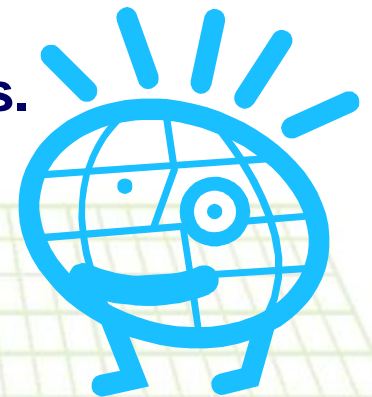
Treat all post projects and processes as our customers.

工作態度：(Working Attitude)

成功者找方法；失敗者找藉口。

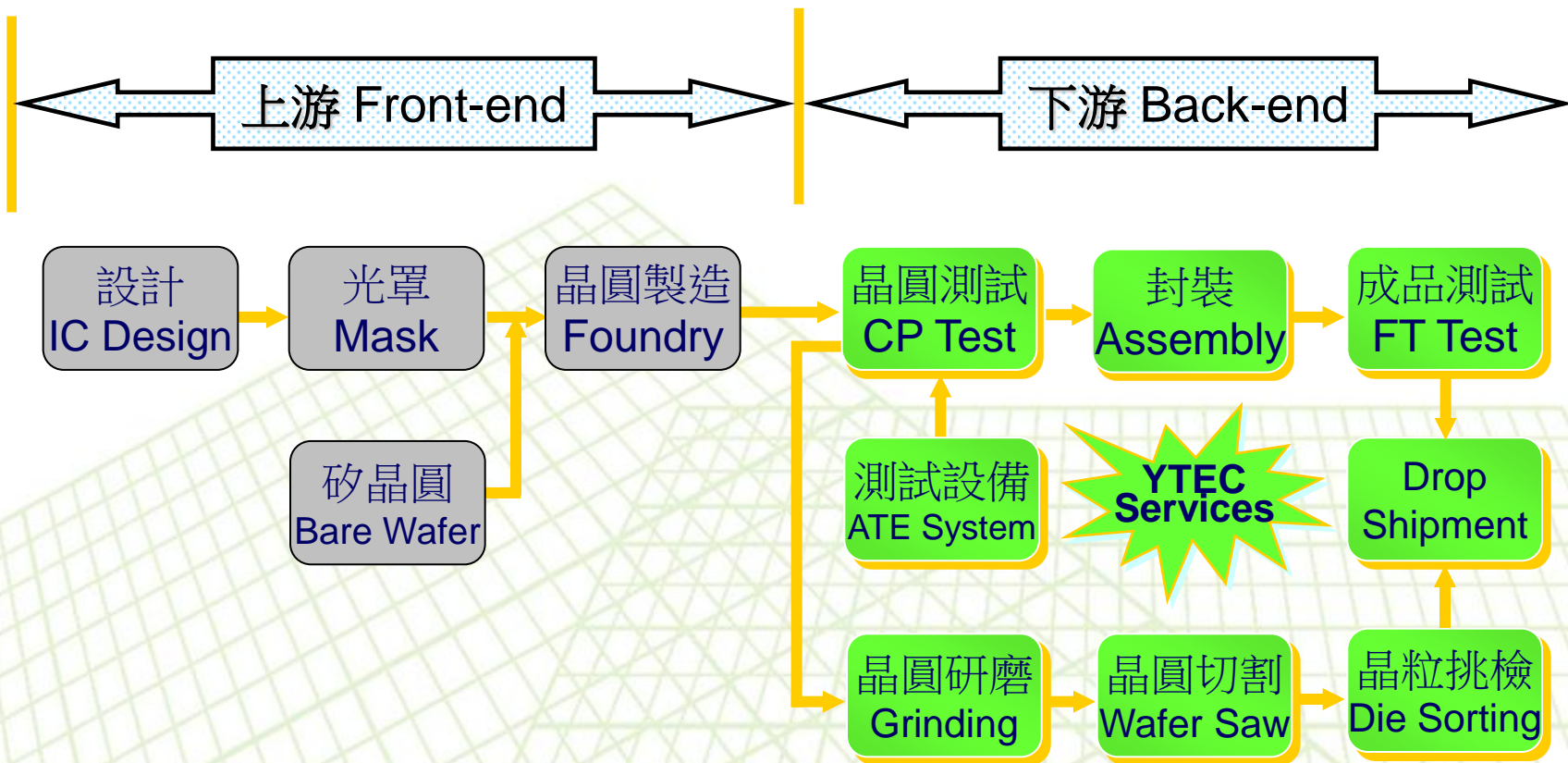
A successful person will find the way to overcome a challenge

Loser finds excuses.



IC OEM Services

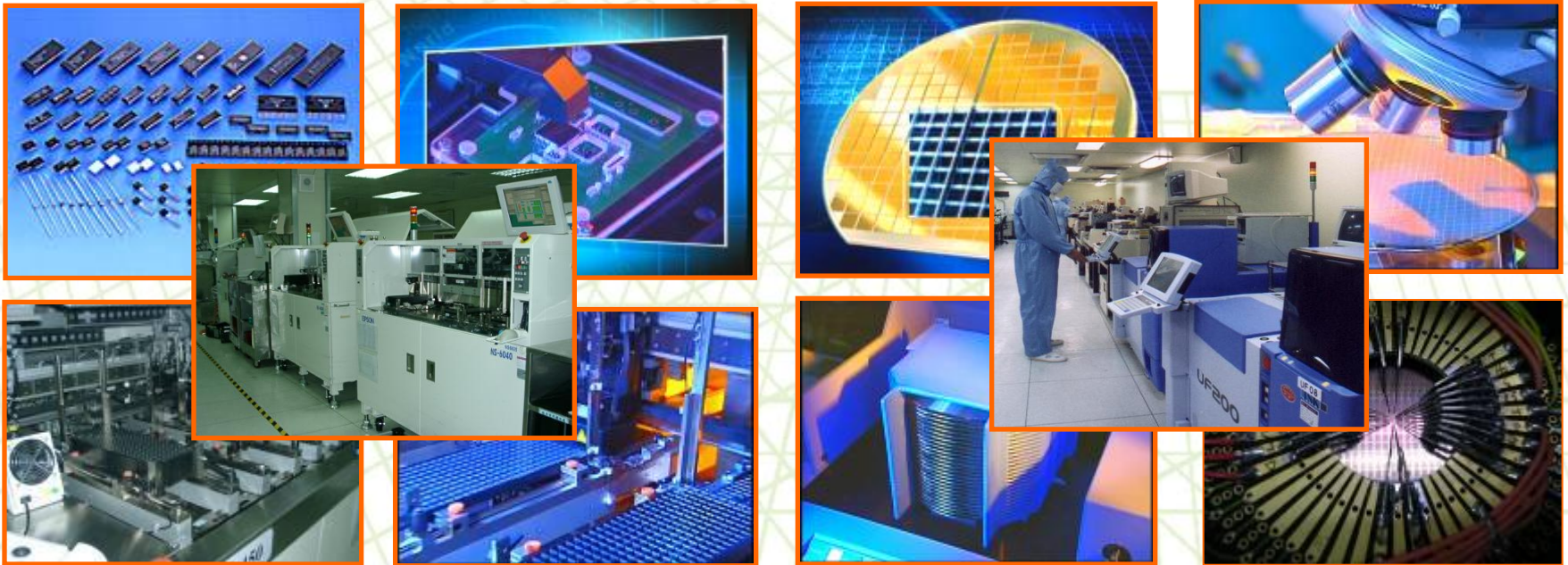
Company Profile



專業測試代工服務(IC Testing OEM)

Company Profile

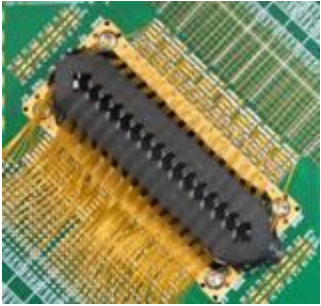
- ❑ **4"~12" Wafer testing (CP)**、**Test program and test kit development** (Probe-card design and manufacture).
- ❑ **IC packaging testing (FT)**、Package type : DIPs、T/SOPs、L/QFPs、QFN、L/BGA...
- ❑ **PC peripheral product、Logic、Analog、Mixed-signal**、No-volatile memory、MCU、**LCD driver IC**、High speed/ High pin count (Scud-1A 512C) testing.
CIS(CMOS Image Sensor)、RF、MES、SoC product testing
- ❑ Others : Laser trimming、Lead scanning、Test program and test kit development technical support **Turn-key service** (For example: PKG assembly、Tape-reel、Drop-shipment...).



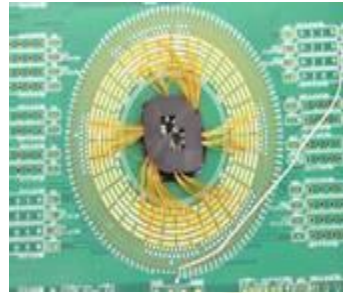
針測板設計與製作

Probe Card Design and Manufacture

Company Profile



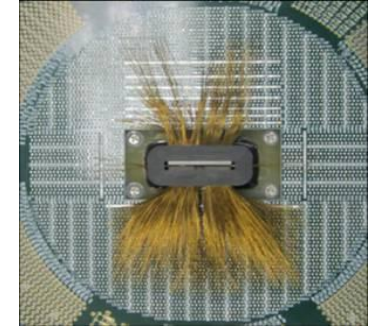
YP5100 7D (16 Dut)



Scud 1A



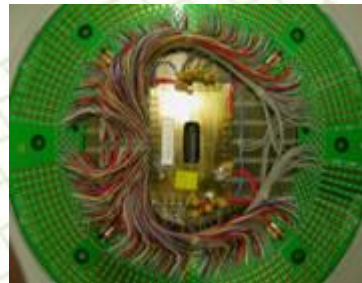
Yokogawa ST6730 (Tester side)



Yokogawa ST6700 (Wafer side)



Agilent HP9400



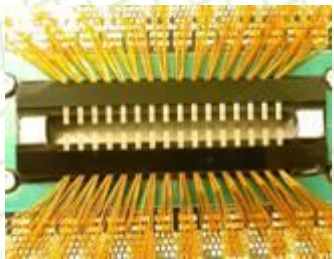
Yokogawa TS6700 (Tester side)



Advantest T5371 (32dut)



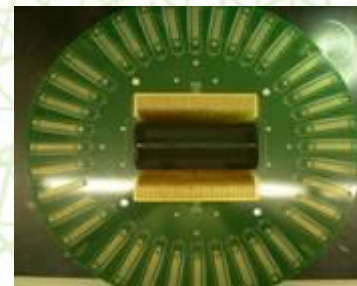
Advantest T6371 (Wafer side)



Advantest T5335P (64dut)



Advantest T5335P (4dut)



*V5400 576Dut
(Wafer side)*



*V5400 576Dut
(Tester side)*

研磨、切割及挑檢代工服務 (Grinding, Sawing, P&P Service)

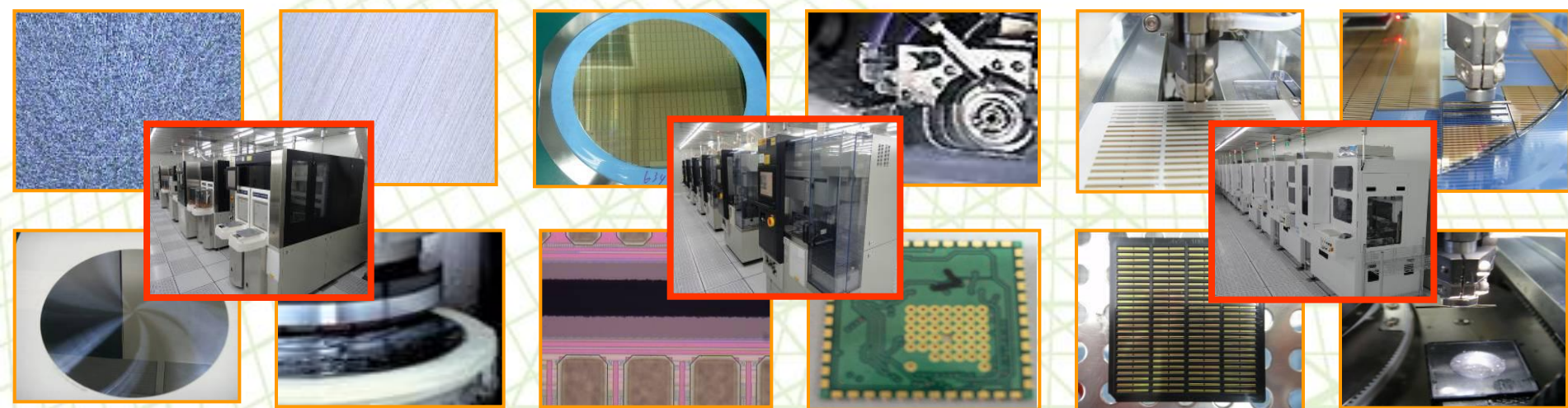
Company Profile

❑ IC Grinding、Sawing、Pick & Place

- 4"~12" Wafer back-side grinding、sawing、chip pick & place services for Consumer and gold bump COG products。
- Pick & Place Chip Back-side AOI inspection System inside。

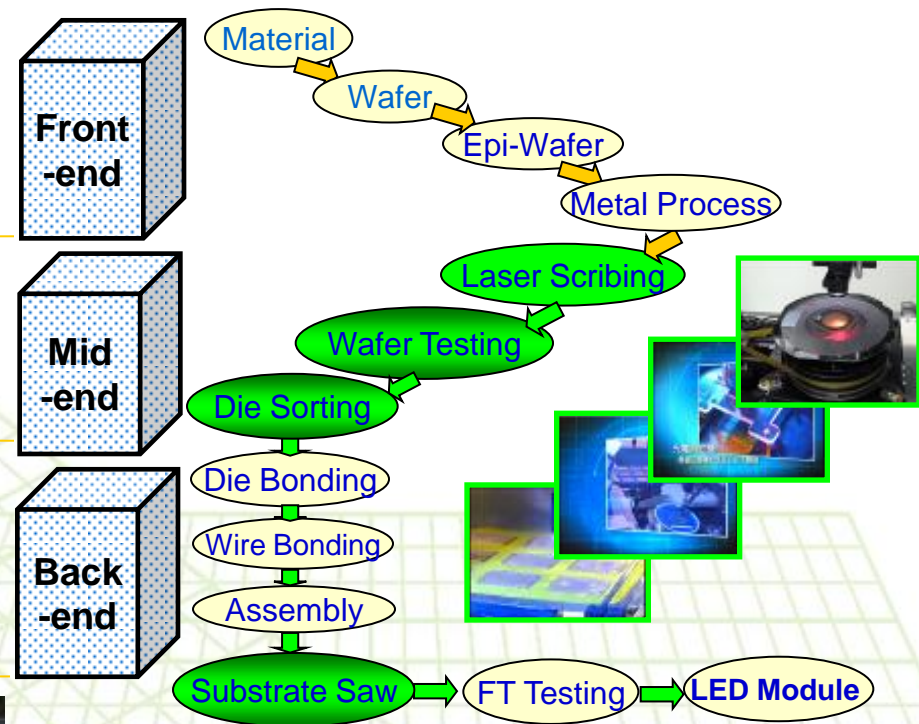
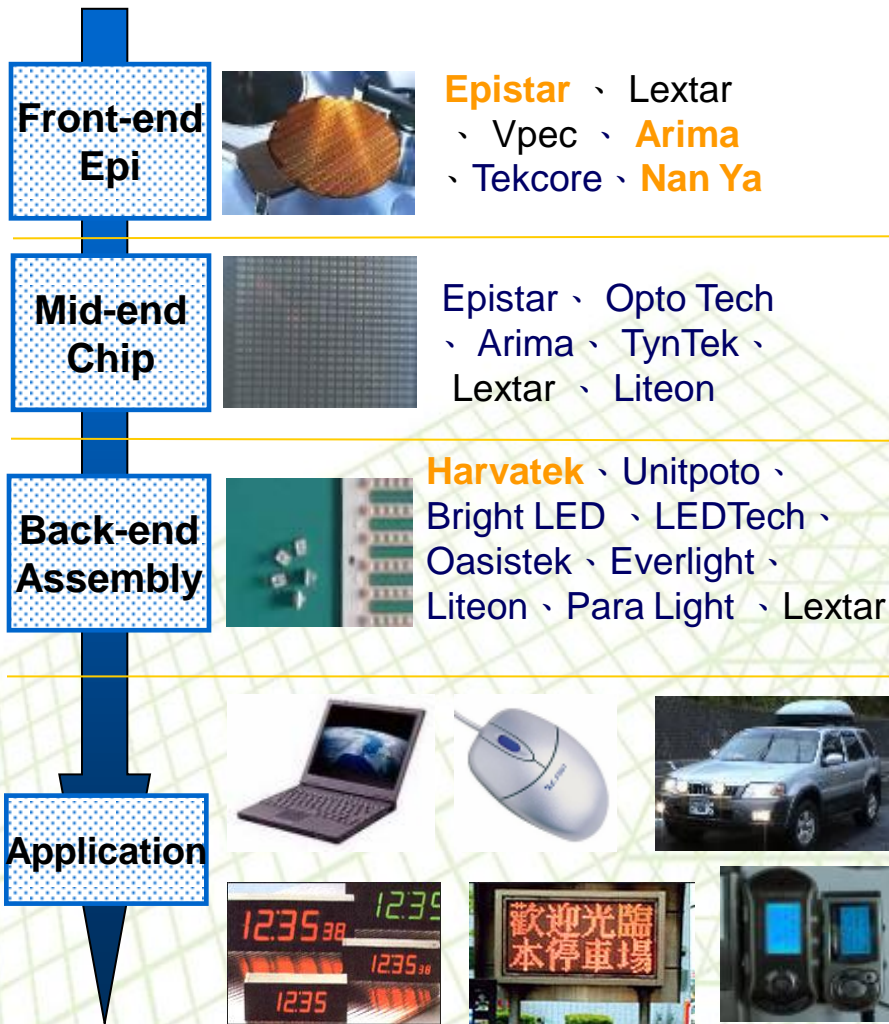
❑ Substrate Sawing

- LED package substrate、Glass substrate、Ceramic Substrate、Ceramic+FR4、Lead-frame、QFN package、HTCC、LTCC、PCB。



LED OEM Services

Company Profile



- **Front-end Product** : Wafer、Epi-Wafer、For example GaAs、GaAsP、AlGaAs、AlGaInP
- **Mid-end Product** : Laser Scribing、Wafer Testing and Pick & Place Die-sorting
- **Back-end Product** : Lamp、Display、SMD、IR transmission module、Optical Communication product、Substrate Saw

IC Testing Application Equipment

Company Profile



YT5100

全功能高速SoC IC
測試機



YT6100

Flat Type
IC測試分類機



YT6200

QFN測試包裝機

Scud-1A

全功能高速測試機



IS-610

全自動晶粒分類機



SB-800

全自動IC固晶機



IS-610 & SB-800 IC Auto Sorter&Die Bonder

Company Profile

IS-610 IC Auto Sorter



SB-800 IC Die Bonder



YT5100 & Scud-1A IC Tester

Company Profile

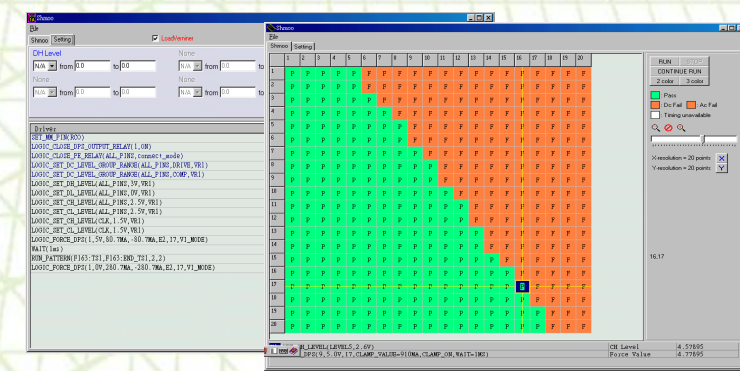
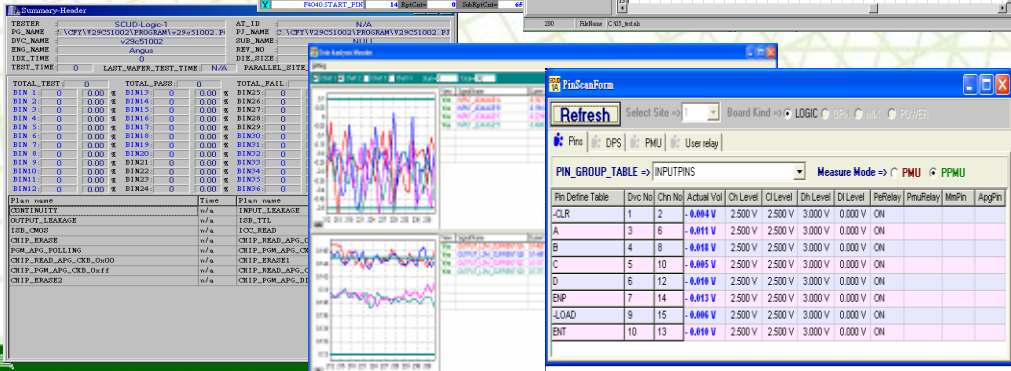
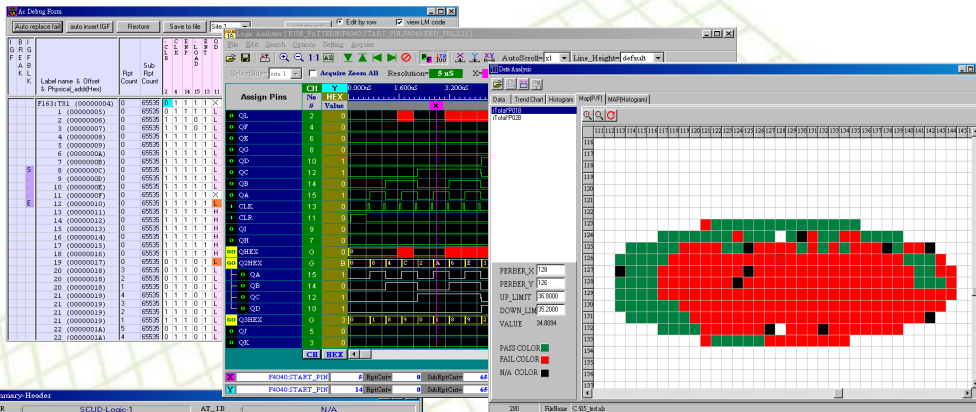
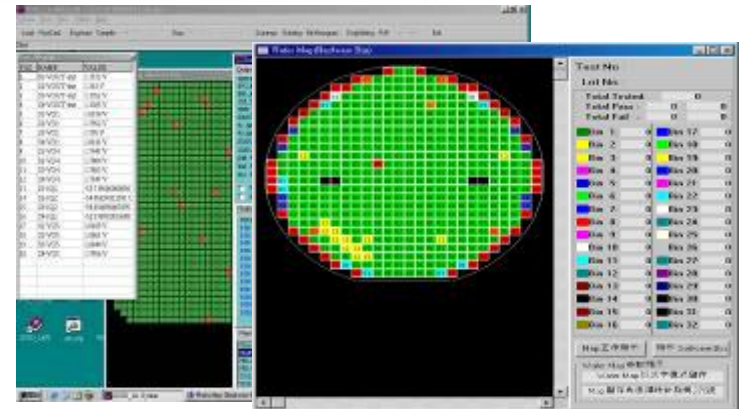
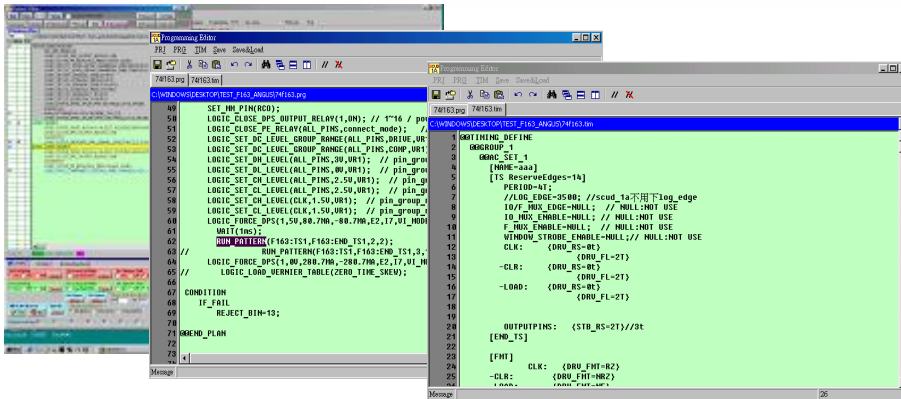
YT5100 High Speed Soc IC Tester

Scud-1A Fully Auto IC Tester



Scud-1A IC Tester System Environment

Company Profile



YT6110 IC Handler / YT6200 QFN Testing & Packing

Company Profile

YT6110 IC Handler



YT6200 QFN Testing & Packing



影像感測模組測試設備CCM(CMOS/Compact Camera Module)

Company Profile

影像感測模組測試設備
CCM YT3100



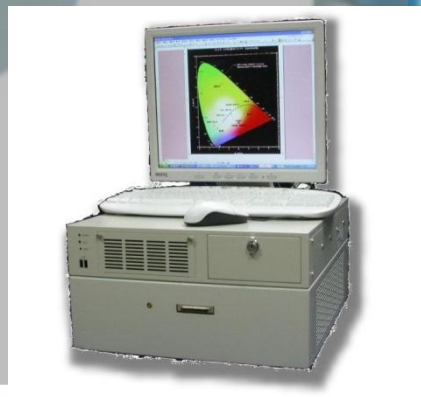
全自動影像感測模組測試設備
CCM YT3300



YT1100 LED Tester(YT1100 LED 測試機)

Company Profile

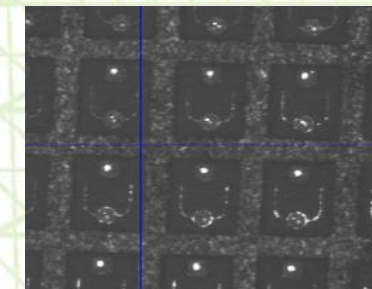
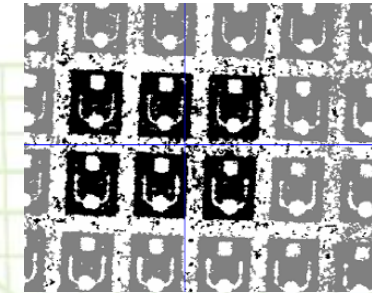
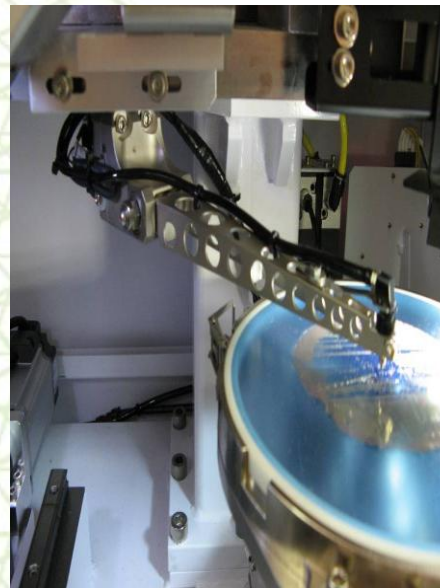
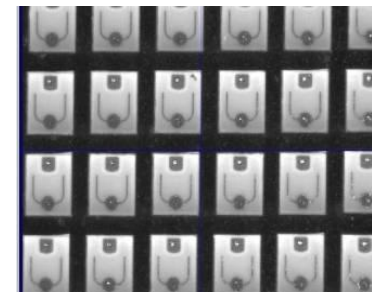
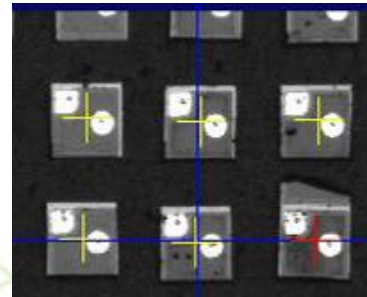
□ YTSD01 → YTSD02 → YT1000 HV LED Tester(8000V ESD)
→ YT1100 HV LED Tester (Multi-station)



LS-360 LED Sorter(晶粒挑檢機)

Company Profile

LS-360 LED Sorter(晶粒挑檢機)



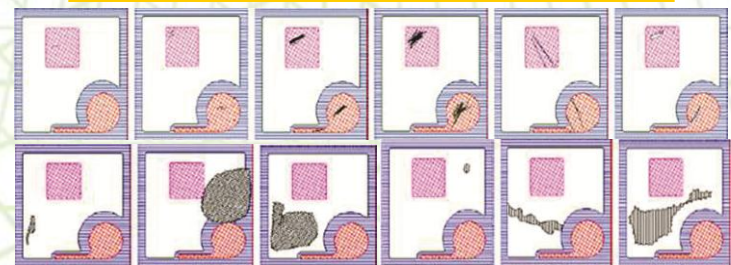
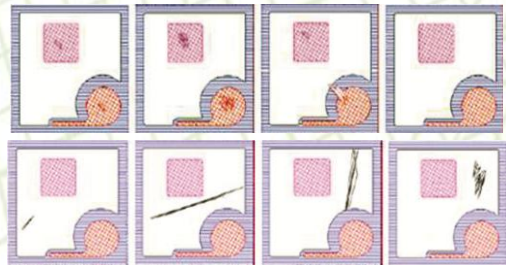
自動光學檢測系統(Auto Optical Inspection)

Company Profile

YT 5311 LED Chip/Wafer/Mask
半自動光學檢測系統



YT 2800 LED Chip/Wafer/Mask
全自動光學檢測系統



自動光學檢測應用(AOI Application)

Company Profile

被動元件、LED
產品六面外觀檢測



YT2300

元件六面外觀
檢測機

YT2330

雙軌元件六面外觀
檢測機

LED及被動元件散熱基板
產品之外觀檢測



YT2700

LED及被動元件
散熱基板之2D AOI
檢測機



YT2705

LED及被動元件
散熱基板之2D AOI
檢測機
(Auto Load/Unload)

LED Assembly Application Equipment

Company Profile



自動光學檢測系統(Auto Optical Inspection)

Company Profile

YT 2300(YT2330) Component AOI

自動光學檢測系統(雙軌)



Reel type taped products:

- Resistor
- Capacitor
- Inductor
- LED
- IC
- Relay
- Connector
- Fuse



DB-159 Die Bonder & YT2500 LED Dispenser

Company Profile

DB-159 Die Bonder

DB-159 泛用型高速固晶机
High Speed Multiple Applications Epoxy Die Bonder

UPH **15K**
Cyc. Time 230ms



超宽工作行程: 120 x 280mm
顶针自动测高、防撞设计
多种制程选择
开放式参数设定



www.wecon.com.tw

DB-159

多制程选择

- ▶ 个别产品角度判断功能(图1)
- ▶ CAD程式输入档案功能(图2)
- ▶ 多晶圆功能(图3)
- ▶ 视讯点检晶圆功能(图4)
- ▶ 多图像教导晶圆功能



(图1)



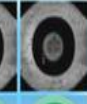
(图2)

(图3)

(图4)

影像辨识系统 (图5)

- ▶ 可自行外观检查标准: 发数、PAD污染检查、异物、破裂、发发区污染检查
- ▶ 具有缺晶、掉晶检查功能
- ▶ 简化晶圆可正确判别
- ▶ 晶圆位置设定能以方形或圆形标底显示, 以提高设定精度 (图6)
- ▶ 晶圆缺陷检测功能



(图5)

(图6)

规格(Specification)

| | | | |
|------------------|--|------------------|---|
| 操作速度 | 15K (3000/3000/3000 - 全上TRON) | 影像辨识系统 LCD | 256 Gray level |
| UPHs | 15K (3000/3000/3000 - 全上TRON) | Resolution | 320x256 pixels |
| Spiking accuracy | X/Y: ±1.5μm Z: ±2μm | 测厚精度 | ±1μm |
| Spiking speed | Max. 523 wafers/hr. | 载台Z轴行程 | 180mm |
| 晶片承载单位 | | Dimensions | 1310(W) x 2020(D) x 1900(H) mm |
| Wafer Ring Size | 6" - 8" (Max) | 所需电压 | AC100 / 4A(Normal), 15A(Peak) / 220V |
| Working Range | ±120mm (Z Axis) | Pneumatic source | 5 kg/cm ² |
| Die size | 0.1mm - 8.0mm (45°/90°上角最佳配合) | Vacuum | 33kg/cm ² (Sub-atm. Vac. Pump) |
| 定位行程 | Length: 110" (2800mm) | | |
| Width | 47" (1200mm) | | |
| 产品重量 | Height: 480mm | | |
| 搬运重量 | Asset CDD x 17" LCD x 112 wafers/Stage | | |

规格如有变更, 恕不另行通知

威控自动化机械股份有限公司
WECON AUTOMATION CORP.

台湾新竹市埔顶路91号127楼
No.127, Alley 99, Pudin Rd, Hsinchu City, Taiwan

TEL:886-3-5734757 FAX:886-3-5734760

www.wecon.com.tw

YT2500 LED Dispenser



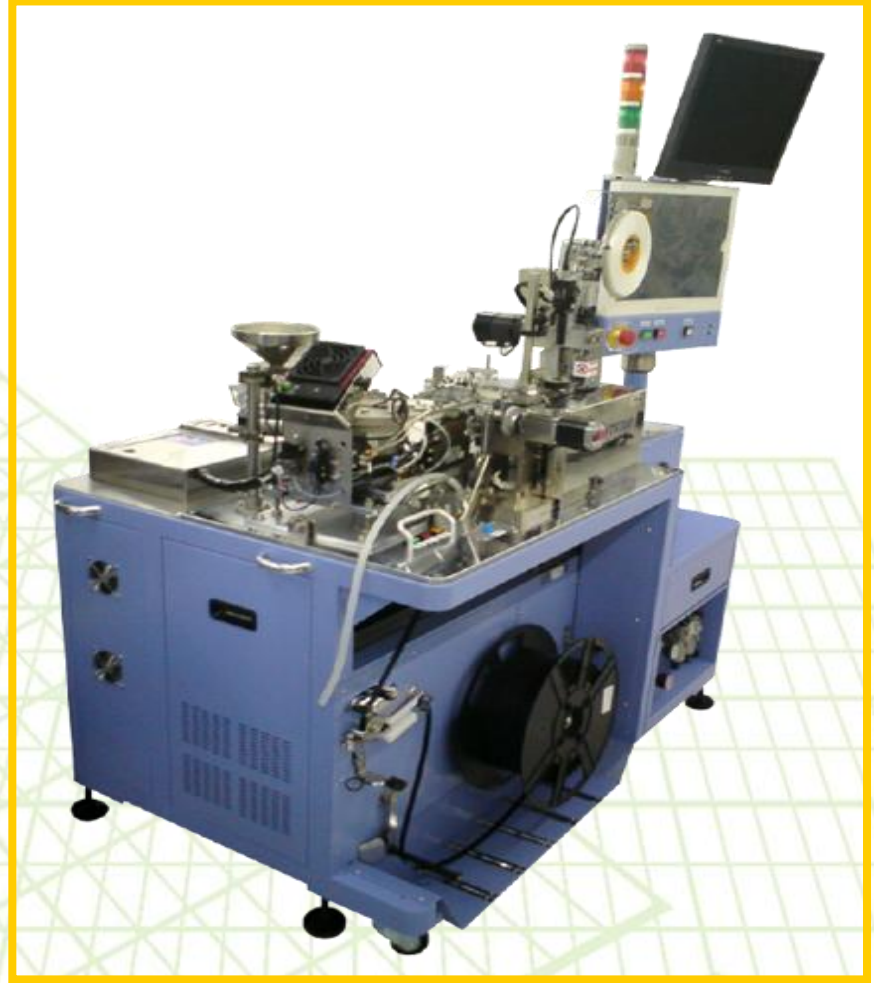
YT6400 LED Handler & YT6300 LED Tapping

Company Profile

YT6400 LED Handler



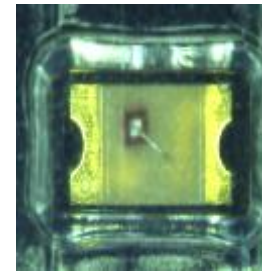
YT6300 LED Tapping



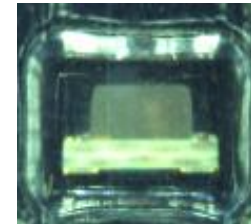
自動光學檢測系統 (Auto Optical Inspection)

Company Profile

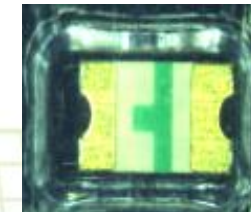
YT 2210 Reel Type Components 自動光學檢測系統



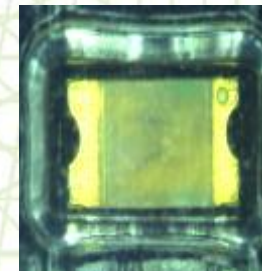
Polarity inverse package



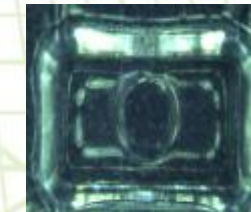
Tilt



Over turn



Mixed package



Empty

Revenue Growth

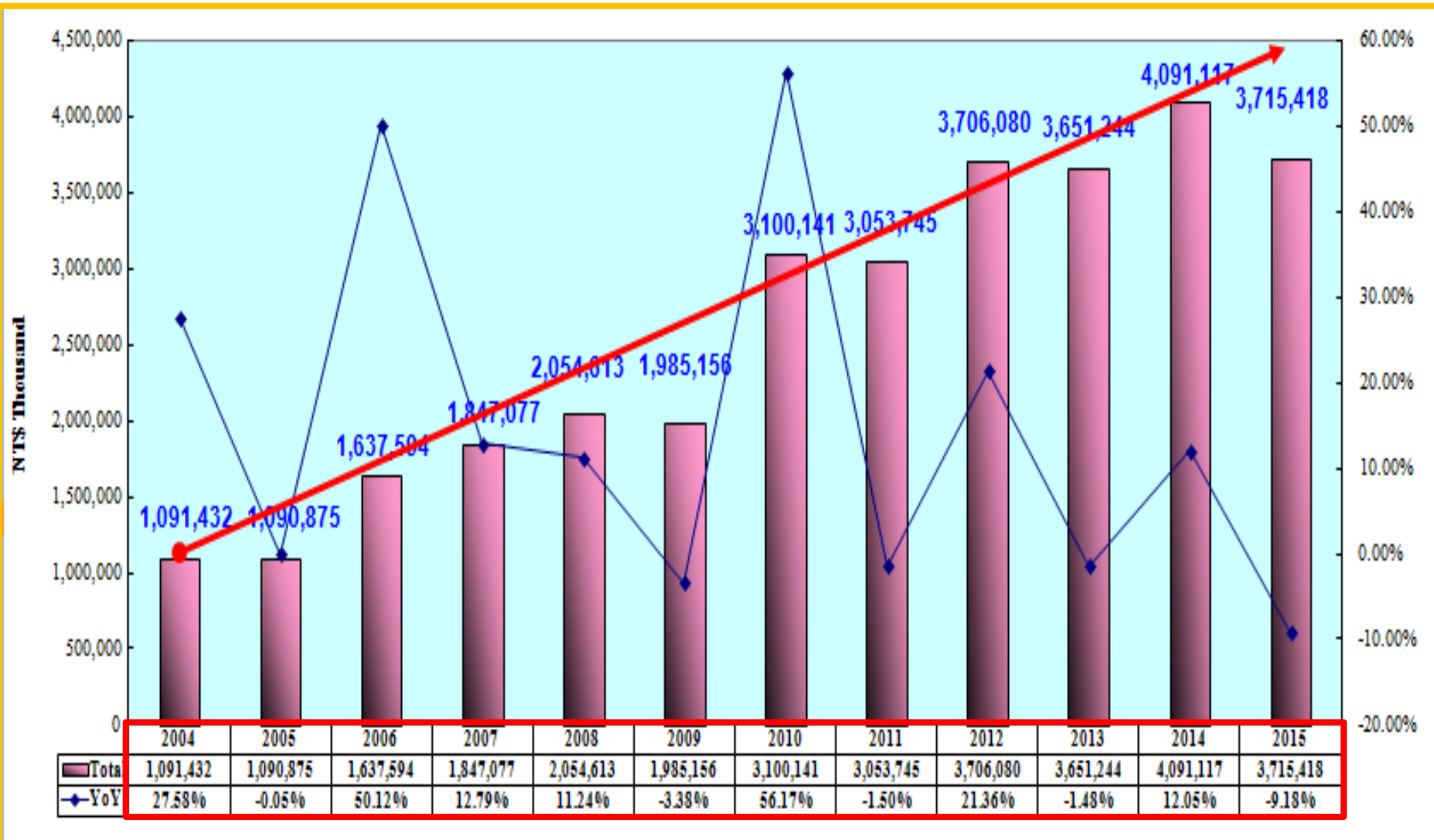
2015&2016 Combine Monthly Revenue

Company Profile
NT\$(Thousand)

| Business Item/Month | | Jan. | Feb | Mar | Apr | May | Jun. | Jul. | Aug. | Sep | Oct. | Nov. | Dec. | Total | Share(%) | |
|---------------------------------------|------|---------|---------|---------|-----------|-----------|-----------|-----------|-----------|-----------|-----------|-----------|-----------|---------|----------|--|
| 切割挑檢代工 Sawing & Sorting OEM | 2015 | 135,098 | 121,083 | 160,652 | 136,076 | 152,400 | 139,402 | 128,503 | 131,086 | 132,698 | 121,768 | 126,800 | 125,241 | 256,181 | 44.00% | |
| | 2016 | 114,404 | 109,618 | | | | | | | | | | | 224,022 | 38.68% | |
| | YoY | -15.32% | -9.47% | | | | | | | | | | | | -12.55% | |
| | MoM | -8.65% | -4.18% | | | | | | | | | | | | | |
| 測試代工 Testing OEM | 2015 | 153,402 | 111,282 | 149,695 | 133,104 | 148,018 | 152,532 | 149,951 | 141,844 | 138,247 | 149,560 | 142,509 | 146,929 | 264,684 | 45.46% | |
| | 2016 | 142,629 | 120,890 | | | | | | | | | | | 263,519 | 45.50% | |
| | YoY | -7.02% | 8.63% | | | | | | | | | | | | -0.44% | |
| | MoM | -2.93% | -15.24% | | | | | | | | | | | | | |
| 機器組裝等產品銷售 Own Product Sales | 2015 | 34,664 | 26,765 | 62,301 | 20,593 | 35,835 | 25,944 | 13,107 | 47,535 | 24,098 | 38,550 | 26,194 | 29,945 | 61,429 | 10.55% | |
| | 2016 | 48,442 | 43,223 | | | | | | | | | | | 91,665 | 15.83% | |
| | YoY | 39.75% | 61.49% | | | | | | | | | | | | 49.22% | |
| | MoM | 61.77% | -10.77% | | | | | | | | | | | | | |
| 營業收入淨額(Unit:K) Sales Revenue (Net) | 2015 | 323,164 | 259,130 | 372,648 | 289,773 | 336,253 | 317,878 | 291,561 | 320,465 | 295,043 | 309,878 | 295,503 | 302,115 | 582,294 | 100.0% | |
| | 2016 | 305,475 | 273,731 | | | | | | | | | | | 579,206 | 100.0% | |
| | YoY | -5.47% | 5.63% | | | | | | | | | | | | -0.53% | |
| | MoM | 1.11% | -10.39% | | | | | | | | | | | | | |
| 營業收入淨額(累計) Sales Revenue (Total) | 2015 | 323,164 | 582,294 | 954,942 | 1,244,715 | 1,580,968 | 1,898,846 | 2,190,407 | 2,510,872 | 2,805,915 | 3,115,793 | 3,411,296 | 3,713,411 | -- | -- | |
| | 2016 | 305,475 | 273,731 | | | | | | | | | | | | | |
| | YoY | -5.47% | -52.99% | | | | | | | | | | | | | |
| 總計代工成長 OEM Growth (Total) | 2015 | 288,500 | 232,365 | 310,347 | 269,180 | 300,418 | 291,934 | 278,454 | 272,930 | 270,945 | 271,328 | 269,309 | 272,170 | 520,865 | -- | |
| | 2016 | 257,033 | 230,508 | | | | | | | | | | | 487,541 | | |
| | YoY | -10.91% | -0.80% | | | | | | | | | | | | -6.40% | |
| | MoM | -5.56% | -10.32% | | | | | | | | | | | | | |

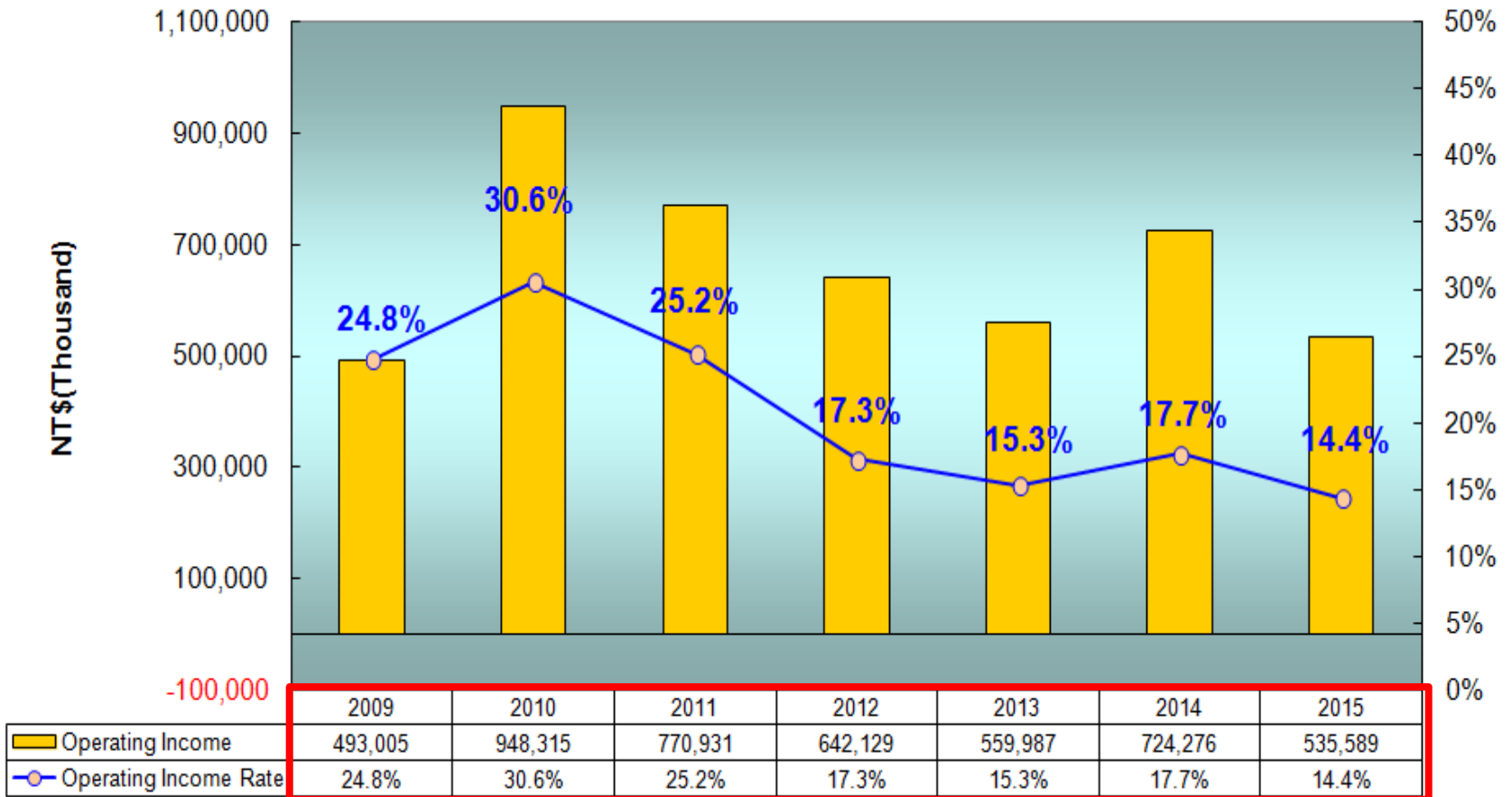
2004~2015 Combine Revenue Growth

Company Profile



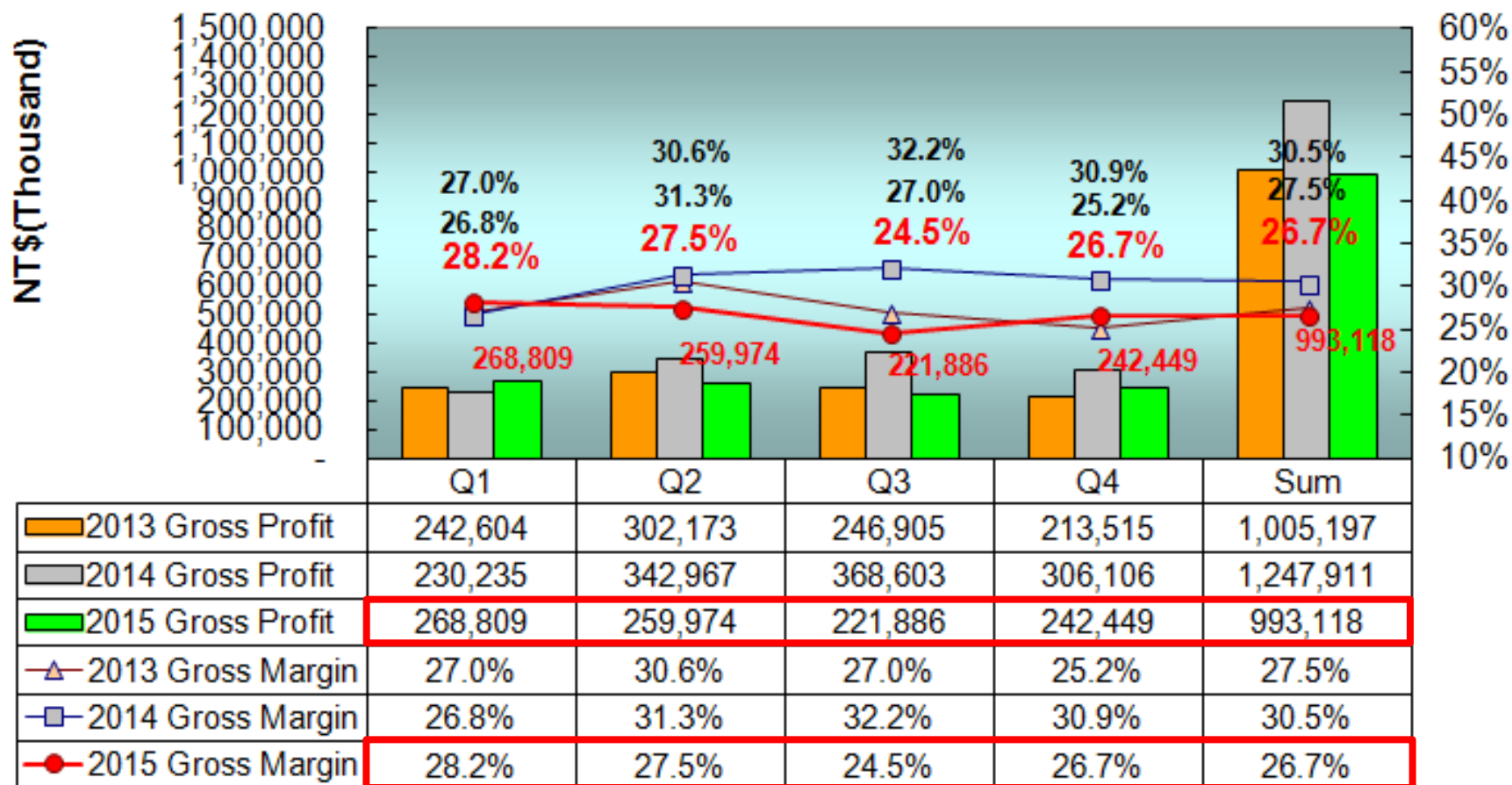
2009~2015 Combine Operating Income

Company Profile



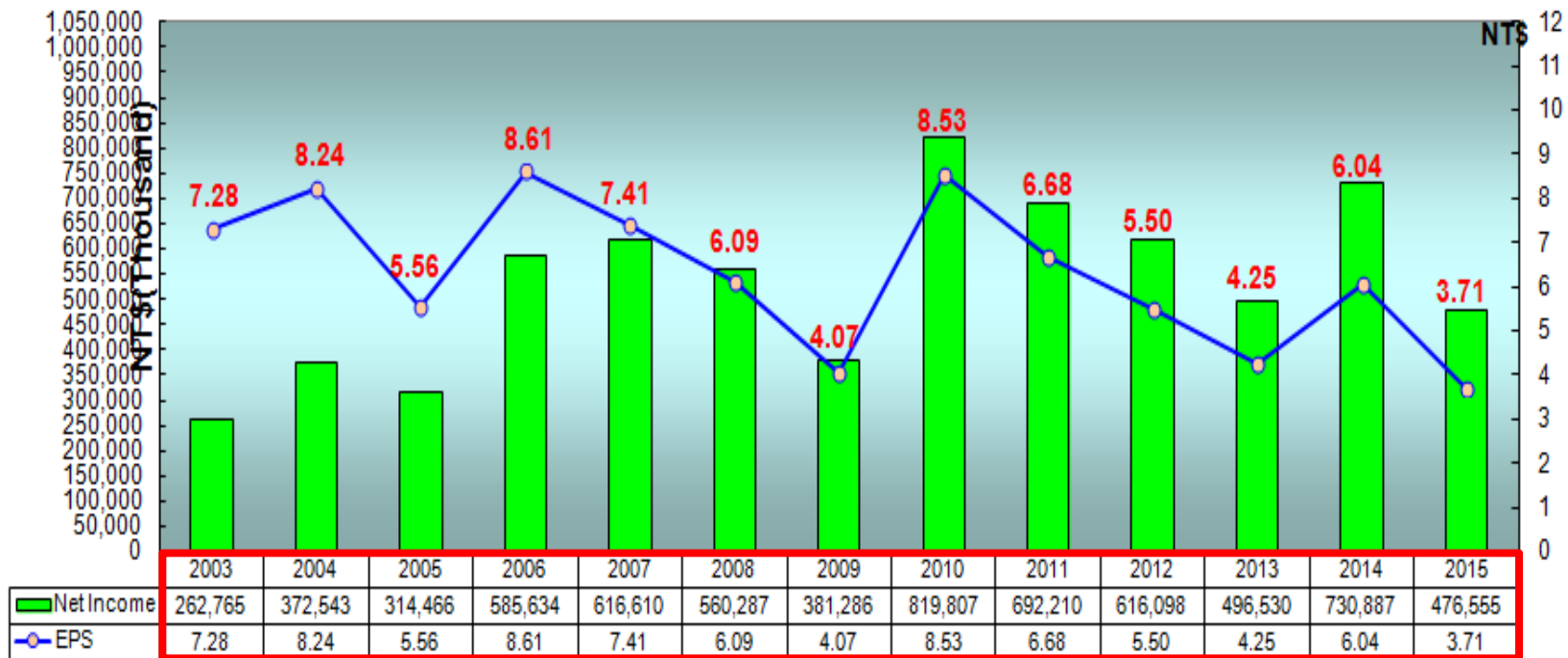
2013~2015 Combine Gross Profit

Company Profile



Yearly Net Income & EPS

Company Profile



Business Expansion Status(相關產業之狀況)

Company Profile

- **半導體及光電切挑代工服務**：2015年營收YOY成長3.35%、低於年初預期、2016年1~2月YOY降-12.55%,3月起將逐漸昇溫、因此將持續追蹤、另LED在新的應用提昇下、公司亦開發新專案,應可適時提供市場成長之需求、相信可挹助公司之營收成長。
- **IC測試系統、IC固晶、挑揀設備及QFN測試包裝機、分類機開發**：成功的開發完成100MHZ 512/768 pins全功能IC測試機、針對多媒體、Digital TV及高速邏輯SOC產品並行測試、並導入量產、更高階機種亦將陸續上市、另研發出IC封裝製程之固晶及挑揀設備與QFN測試包裝機及分類機、可應用於IC封裝製程及成品測試生產、更具備三合一功能(測試、外觀檢測及包裝)、以提昇IC測試代工服務之競爭優勢。
- **CIS、CCM、LED後段生產設備及AOI設備開發**：成功開發完成CIS(CMOS影像感測系統)、具備高速影像處理及完整電性測試之解決方案、並導入代工服務、挹助營收。自行開發之CCM(影像感測模組測試設備)、LED後段生產設備及AOI(自動光學檢測系統)等設備、因應市場需求將擴展銷售、AOI設備研發係以解決半導體及光電等產業在目檢之視覺盲點並可大幅節省人力、並已將光電技術結合影像分析等與自動化設備設計、成功研發出各類型外觀檢測機。
綜觀設備銷售2015年營收YOY成長降-26%低於年度預期、2016年1~2月營收YOY成長49.2%高於預期、設備研發之成效已陸續顯現、因此將持續追蹤、相信在持續開發新產品及功能提昇下、展望未來應可持續挹助業績成長之動力。
- **半導體代工服務**：2015年營收YOY微降-14.55%、低於年初預期、2016年1~2月營收YOY微降-0.44%、3月起將逐漸升溫、因此將持續追蹤、而YTEC在持續開發新產品與互補及平衡的產品線發酵下(如LCD,RF.MEMS..etc)、展望未來應可持續挹助業績成長之動力。

Share payout composition and history

Company Profile

| Year | 96年度 (2007) | 97年度 (2008) | 98年度 (2009) | 99年度 (2010) | 100年度 (2011) | 101年度 (2012) | 102年度 (2013) | 103年度 (2014) | 104年度 (2015) | 105年度 (2016) |
|----------------------------------|-----------------------|-----------------------|-----------------------|-----------------------|-----------------------|------------------------|------------------------|------------------------|------------------------|------------------------|
| | 配95年度 Profit(2006) | 配96年度 Profit(2007) | 配97年度 Profit(2008) | 配98年度 Profit(2009) | 配99年度 Profit(2010) | 配100年度 Profit(2011) | 配101年度 Profit(2012) | 配102年度 Profit(2013) | 配103年度 Profit(2014) | 配104年度 Profit(2015) |
| Cash(NTD) | \$4.00 | \$4.00 | \$3.00 | \$3.00 | \$4.671 | \$5.238 | \$4.659 | \$3.668 | \$5.000 | \$3.300 |
| Free Pair stock of | \$1.00 | \$0.50 | \$0.10 | \$0.10 | | | \$0.098 | \$0.099 | \$0.10 | |
| Stock Capital reserve fund | -- | -- | -- | -- | \$0.093 | \$0.095 | -- | -- | -- | -- |
| EPS(NTD) | \$8.61 | \$7.41 | \$6.09 | \$4.07 | \$8.53 | \$6.68 | \$5.50 | \$4.25 | \$6.04 | \$3.71 |

公司願景 Company Mission

Company Profile

著眼於國內外市場的開拓，讓久元成為立足台灣的整合性後段IC及LED代工服務廠，並朝放眼世界的自有產品、自有品牌邁進。

Based on the domestic and international marketing development, YTEC has gotten a foothold as an integrated back-end IC&LED OEM factory. YTEC moves forward, with it's own products, and Own Bench Marks.



Q & A

Company Profile

☐ Thank you very much

