

## Brief Introduction

December 10th, 2013



# 2013 VISIT SCHEDULE @久元

*Company Profile*

## Contents

## Time

- |   |             |
|---|-------------|
| <input type="checkbox"/> Brief Introduction of YTEC | 14:00~14:20 |
| <input type="checkbox"/> Q & A                      | 14:20~15:30 |
| <input type="checkbox"/> Line Tour (Free)           | 15:30~16:00 |

# Contents

*Company Profile*

- Brief Introduction**
- Factory Overview**
- Company Milestone**
- Company Management Concept**
- OEM Services**
- R&D Roadmap and Own Product Development**
- Revenue Growth**
- Company Mission**





# Brief Introduction

*Company Profile*

**Found Time** : 1991/July

**Chairman** : Bily Wang

**President of Service Group** : Jeff Chang

**President of Own Product Group** : Glen Chen

**Employee** : 992 persons

**Capital** : NTD 1176million (USD 39.7 million)

**Factories** : **Plant 1** : Special & substrate sawing

**SBIP Plant** : IC back-end turn-key service, ATE&AOI

**Li Hsin Plant** : LED back-end turn-key service

**An Ping Plant** : LED Testing & sorting

**Xiamen/Changzhou Plant** : LED Testing & sorting

**CRT (Shenzhen) Plant** : IC Testing & sorting

**WuJiang MightYtek Plant** : IC Assembly

**Business Items** :

- 1. Semiconductor and LED OEM**: IC testing, wafer sawing, grinding, chip sorting and LED testing, laser scribing, sorting and substrate sawing.
- 2. Design, manufacture and sales of semiconductor equipments**: Full-function IC tester, logic ,analog, Mixed-Signal IC Tester , LED tester, prober and sorter, CCM equipments, AOI system.



*YoungTek Electronics Corp.*

# Factory Overview

Company Profile

Plant #1



SBIP Plant



Li-Hsin Plant



Hsinchu

Tainan

An-Ping Plant



YoungTek Electronics Corp.



# Factory Overview

Company Profile

Changzhou YT Plant



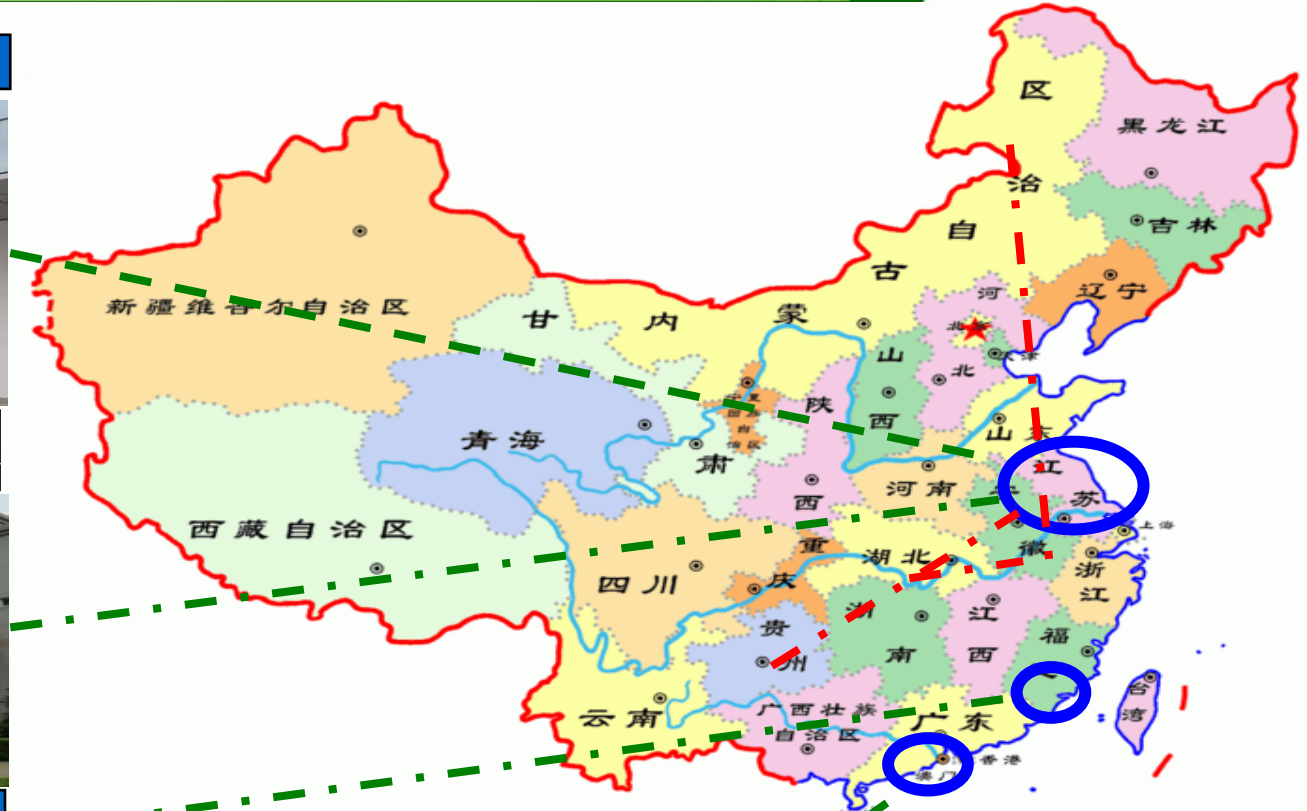
Wujiang MightYtek Plant



Xiamen YT Plant



CRT (Shenzhen) Plant



YoungTek Electronics Corp.

# Company Milestone

Company Profile

- 1991/Jul. YTEC was founded and the capital is NTD \$ 5 million.
- 1998/Oct. Develop logic tester (Goblin) with 5 MHz/40 pins.
- 2000/Mar. Achieved the certification of ISO 9001
- 2000/Jul. Full-function IC tester was verified by industry agency with predominant product development project.
- 2002/Nov. SEC (Securities and Exchange Commission) approve YTEC to public stock.
- 2003/Nov. LED OEM service was established.
- 2003/Dec. Obtain OTC certification.
- 2004/Mar. Got the approval to establish the branch in Hsin chu SBIP.
- 2004/Mar.29 Listed in Taiwan stock exchange. (Stock No.: 6261)
- 2006/Mar. Signs the cooperation agreement of the IC test system technology. with Agilent Technologies
- 2006/Dec. Achieved the certification of ISO 14001 and OHSAS 18001.
- 2007/Jul. Develop Tainan An Ping plant for LED sorting.
- 2008/May Develop Li Hsin plant for LED test & sorting.
- 2008/Oct. Achieved the certification of ISO/TS 16949.
- 2009/May. To establish the Xiamen Young Tek Electronics Co., Ltd. to provide the LED Backend Turn-key service.
- 2009/Jun. Solar silicon substrate inspection system was verified Science Park Administration with development project.
- 2010/Mar. Develop SBIP plant for wafer grinding & sawing.
- 2010/Sep. To establish the Changzhou YoungTek Electronics Co., Ltd. to provide the LED Backend Turn-key service.
- 2011/Jan. Achieved the certification of IECQ QC080000.
- 2011/Dec. To establish the WuJiang MightYtek Semiconductor Co., Ltd. to provide the Semiconductor Backend Testing & Ass'y Turn-key service.
- 2012/Feb. To establish the Shenzhen Clear Rich Tech. Co., Ltd. to provide the Semiconductor Backend Testing service.
- 2012/May. Signs the cooperation memorandum, the expansion related marketing functions Development with Yoshikawa Semiconductor Co., Ltd.



**YTEC** YoungTek Electronics Corp.



# Company Management Concept

Company Profile

## 經營理念：(Management Concept)

主人翁經營理念；下工程即是客戶。

Treat YTEC as your own company. (Host concept)

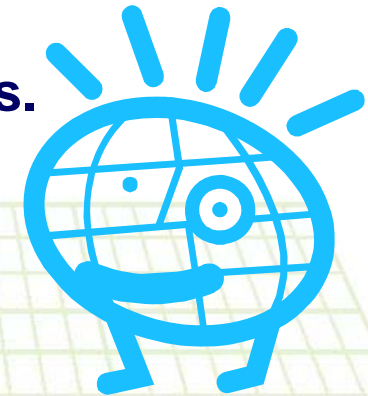
Treat all post projects and processes as our customers.

## 工作態度：(Working Attitude)

成功者找方法；失敗者找藉口。

A successful person will find the way to overcome a challenge

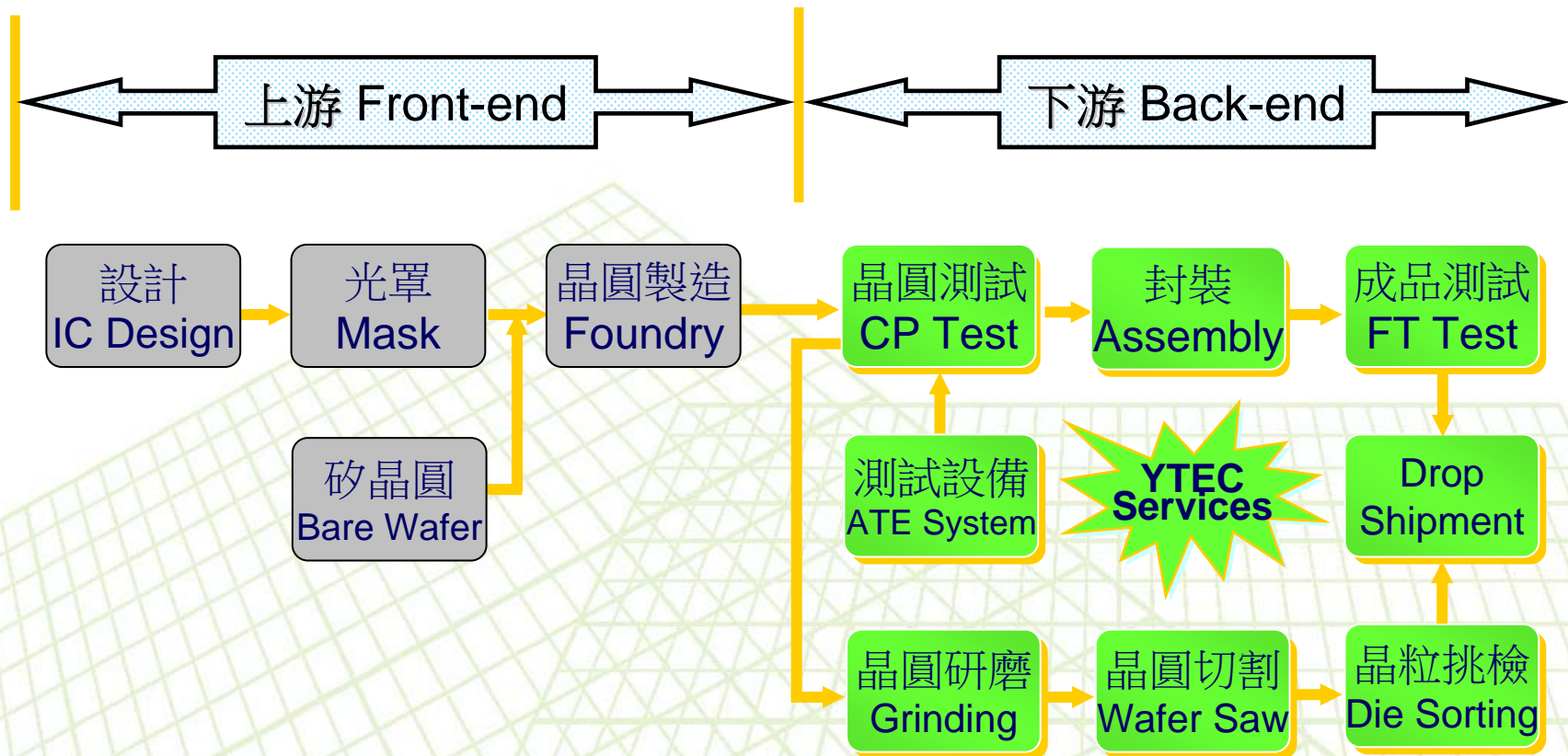
Loser finds excuses.





# IC OEM Services

Company Profile



# 專業測試代工服務(IC Testing OEM)

Company Profile

- ❑ 4"~12" Wafer testing (CP) 、 Test program and test kit development (Probe-card design and manufacture).
- ❑ IC packaging testing (FT) , Package type : DIPs 、 T/SOPs 、 L/QFPs 、 QFN 、 L/BGA...
- ❑ PC peripheral product 、 Logic 、 Analog 、 Mixed-signal 、 No-volatile memory 、 MCU 、 LCD driver IC 、 High speed/ High pin count (Scud-1A 512C) testing.  
CIS(CMOS Image Sensor) 、 RF 、 SoC product testing
- ❑ Others : Laser trimming 、 Lead scanning 、 Test program and test kit development technical support **Turn-key service** (For example: PKG assembly 、 Tape-reel 、 Drop-shipment...).





# 研磨、切割及挑檢代工服務 (Grinding, Sawing, P&P Service)

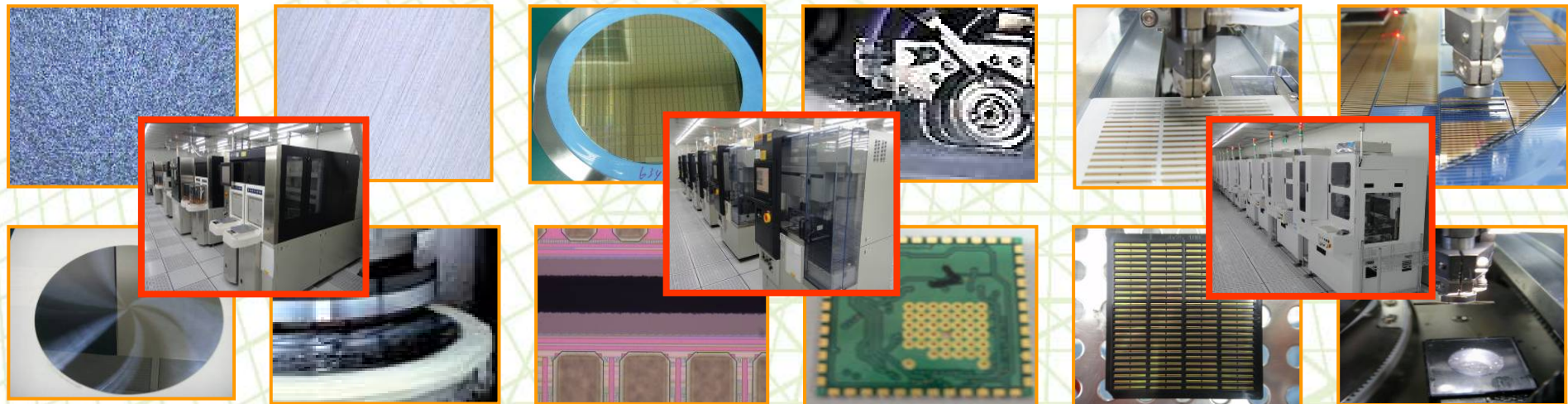
Company Profile

## ❑ IC Grinding、Sawing、Pick & Place

- 4"~12" Wafer back-side grinding、sawing、chip pick & place services for Consumer and gold bump COG products。
- Pick & Place Chip Back-side AOI inspection System inside。

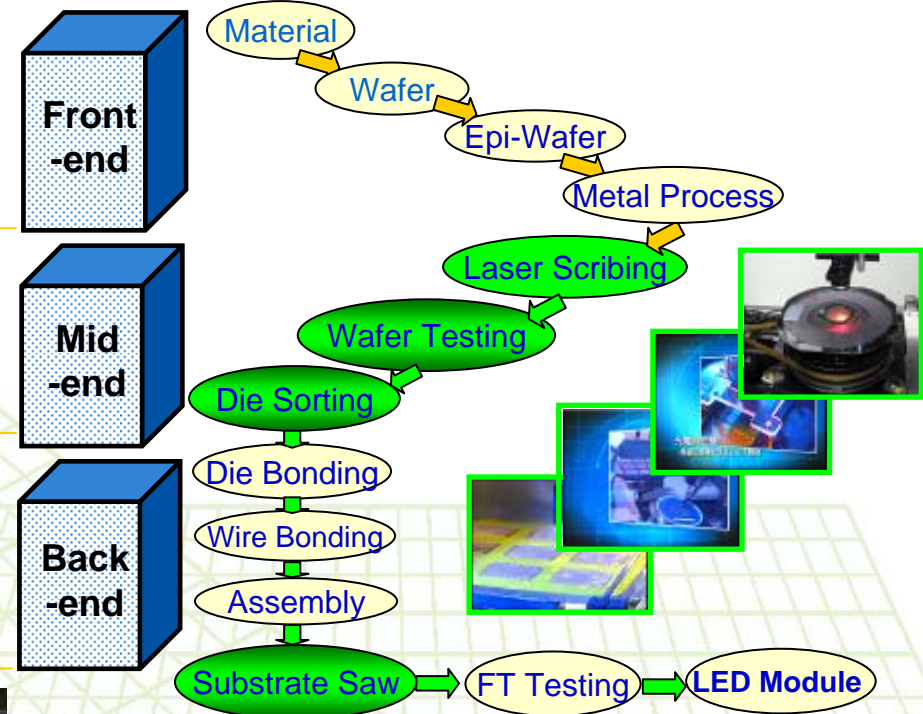
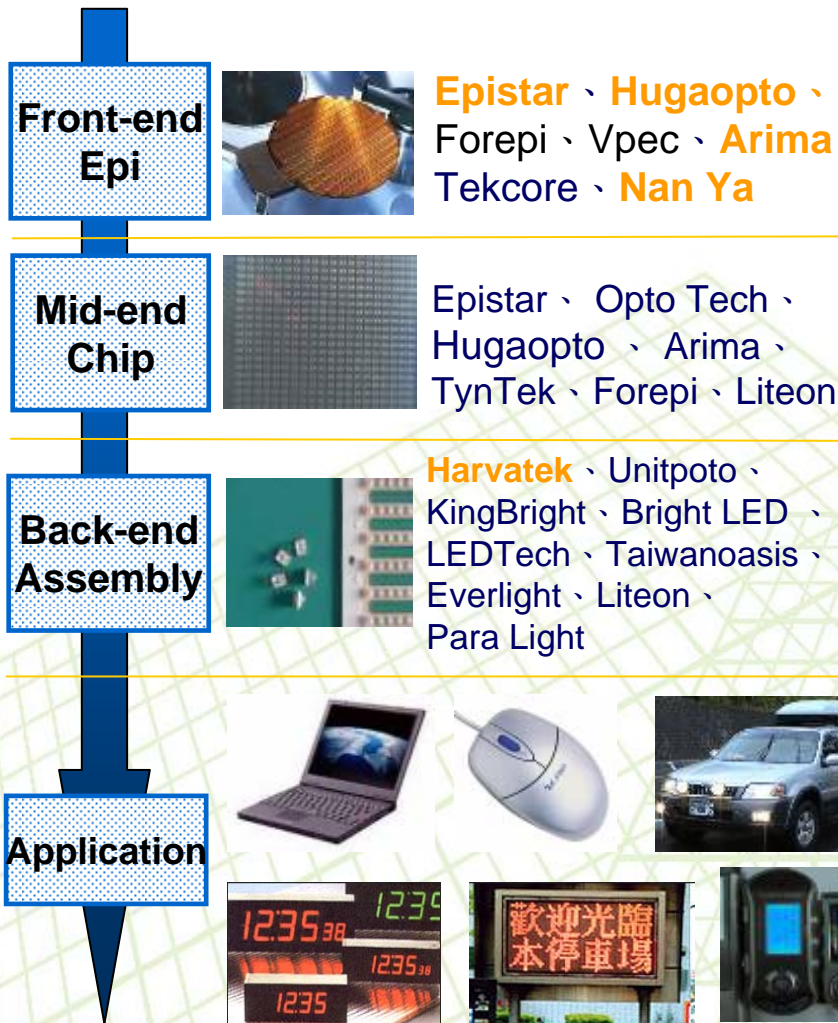
## ❑ Substrate Sawing

- LED package substrate、Glass substrate、Ceramic Substrate、Ceramic+FR4、Lead-frame、QFN package、HTCC、LTCC、PCB。



# LED OEM Services

Company Profile



- **Front-end Product** : Wafer · Epi-Wafer · For example GaAs · GaAsP · AlGaAs · AlGaInP
- **Mid-end Product** : Laser Scribing · Wafer Testing and Pick & Place Die-sorting
- **Back-end Product** : Lamp · Display · SMD · IR transmission module · Optical Communication product · Substrate Saw



# IC Testing Application Equipment

Company Profile



**YT5100**

全功能高頻SoC IC  
測試機

**Scud-1A**



**YT6100**

Flat Type  
IC測試分組機



**YT6200**

QFN測試包裝機

# YT5100 & Scud-1A IC Tester

Company Profile

YT5100 High Speed Soc IC Tester

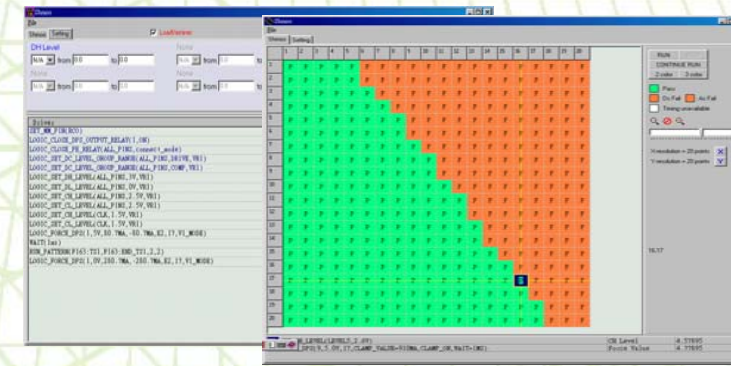
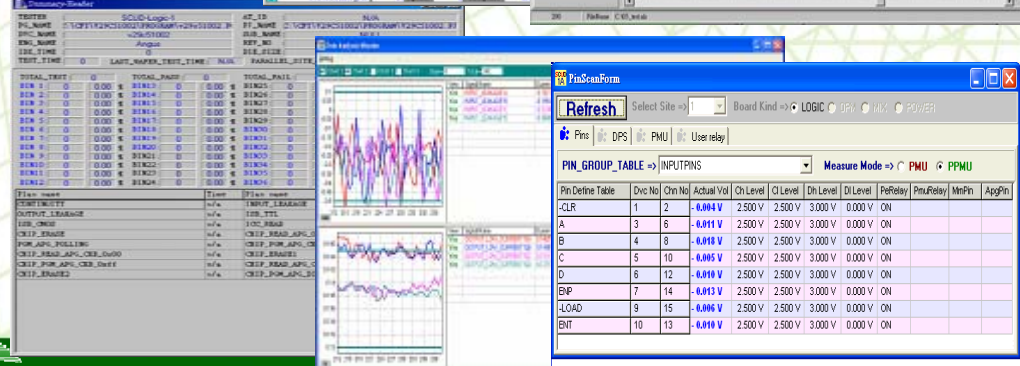
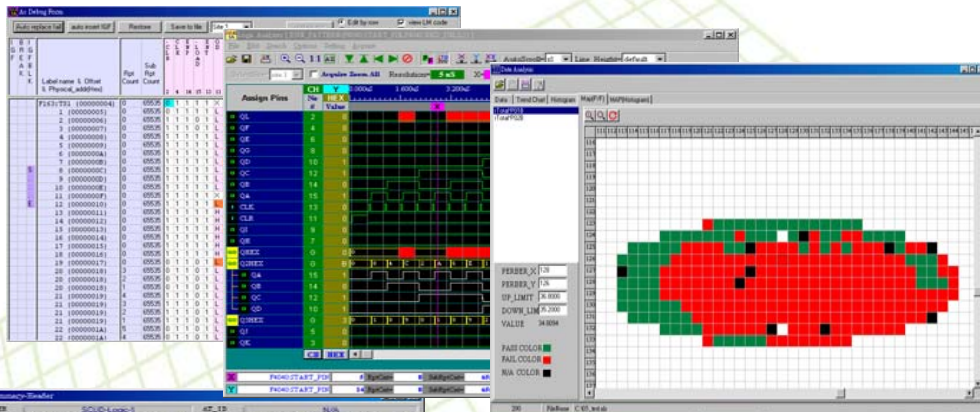
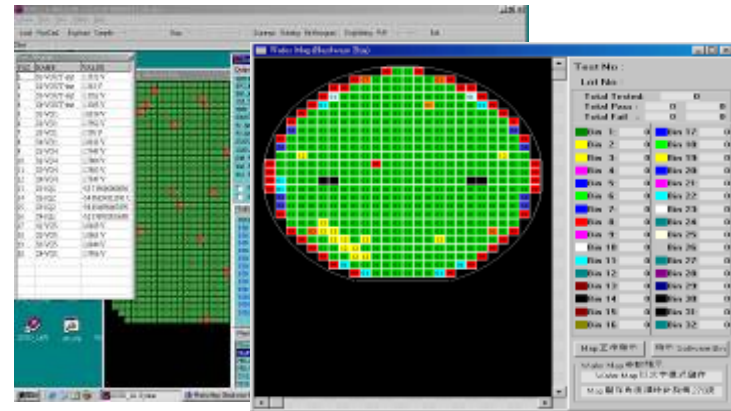
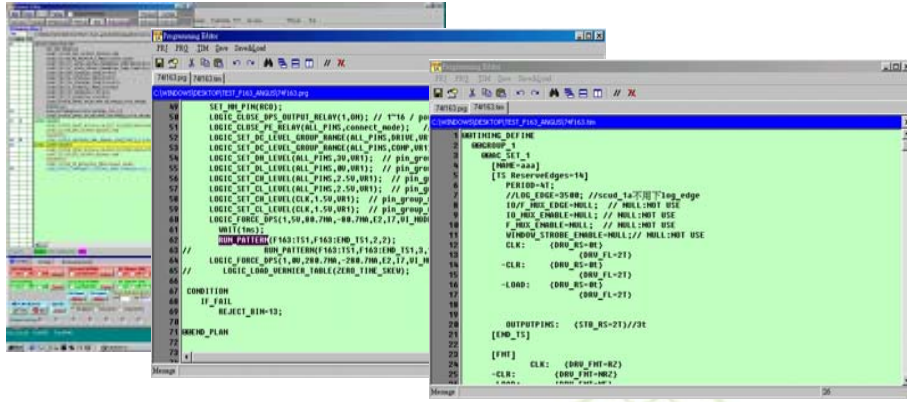
Scud-1A Fully Auto IC Tester





# Scud-1A IC Tester System Environment

Company Profile



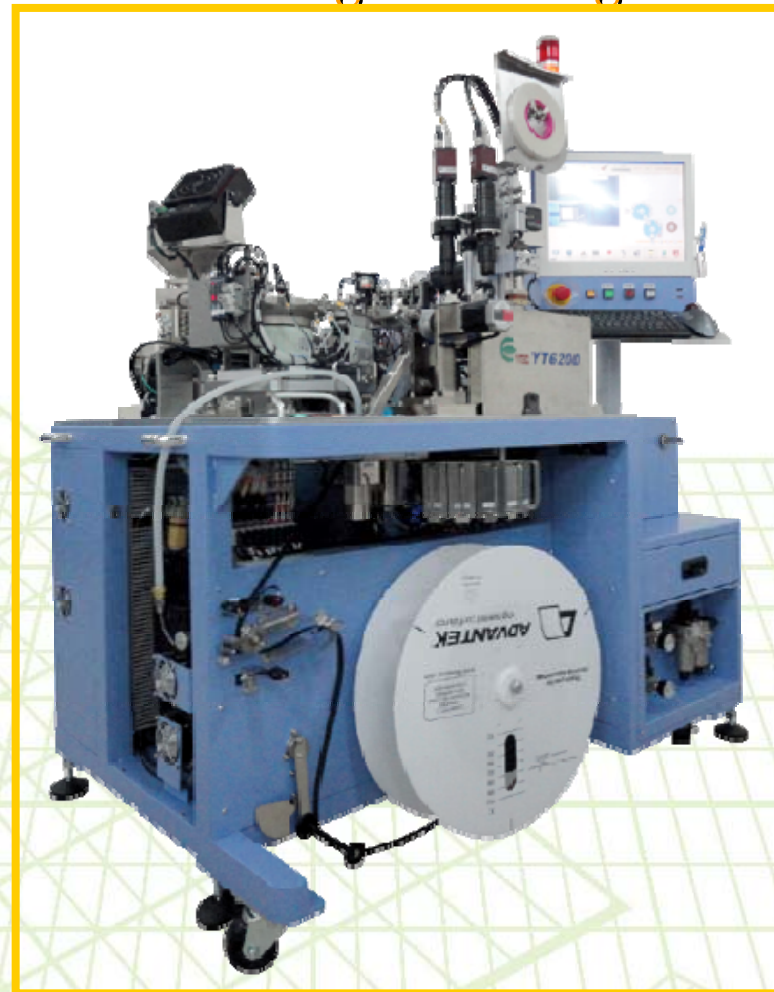
# YT6110 IC Handler / YT6200 QFN Testing & Packing

Company Profile

YT6110 IC Handler



YT6200 QFN  
Testing & Packing





# 影像感測模組測試設備 CCM (CMOS/Compact Camera Module)

Company Profile

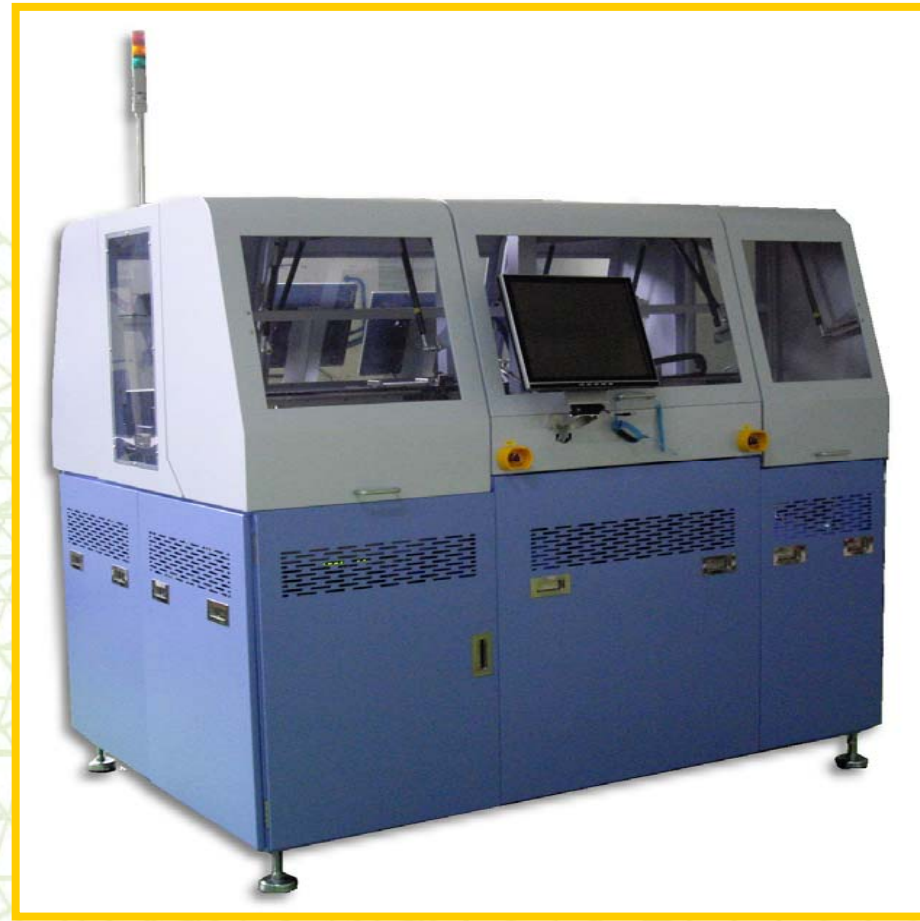
影像感測模組測試設備

CCM YT3100



全自動影像感測模組測試設備

CCM YT3300



# YT1100 LED Tester(YT1100 LED 測試機)

Company Profile

□ YTSD01 → YTSD02 → YT1000 HV LED Tester(8000V ESD)  
→ YT1100 HV LED Tester (Multi-station)





# DB-260 LED Prober

Company Profile

## PB-260 LED Prober

### PB-260 LED 晶粒檢測機 LED Chip Probe Station



**自動換探針功能  
針痕監控系統  
晶粒外觀辨識功能**





■ 積分球收光高度6mm

■ 複合式收光系統

### PB-260

**雙池、變角、PAD、極化辨識**

**特色:**

- 自動換探針功能 **NEW**
- 針痕監控系統 **NEW**
- 探針高度感知 **NEW**
- 雙池、變角、PAD、極化辨識系統
- 積分球收光高度6mm
- 自動設定起始點(Auto Alignment Key Search)
- 簡易的操作畫面
- Z軸採用直立式線性馬達運動精度高結構穩定
- 可依客戶需求，同時安裝積分球與顯微鏡收光系統
- 積分球固定座採用三軸精密微調平台
- 探針座使用快拆式底座，探針維護便利
- 可依客戶需求搭配導電或不導電平台

**規格(Specification)**

Chuck 行程		138mm or 150mm			
Water 特性	4" MAX.	可旋轉角度			
X-Y 軸行程	210mm x 470mm	Z軸行程			
X-Y 軸解析度	1 μm	旋轉度			
X-Y 軸精度	± 10 μm (Max. with COG)	重複精度			
Z軸行程	100mm	重量			
Z軸解析度	1 μm	正面負載			
Z軸精度	± 4 μm	電壓			
Communication Interface		TTL, RS232			
機台尺寸		Width = 1165mm, Depth = 917mm, Height = 1843mm (Incorporate and lower light)			

越路如有變更，恕不另行通知

**WECON**  
威控自動化  
www.wecon.com.tw

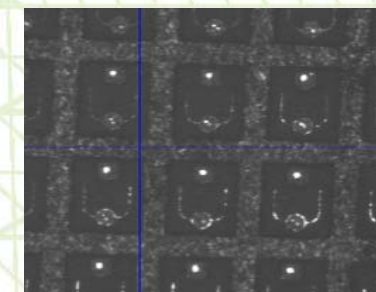
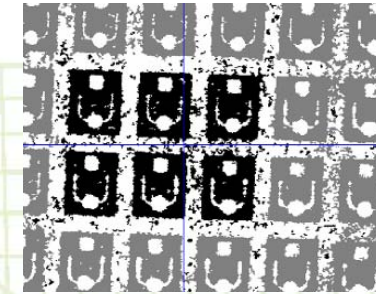
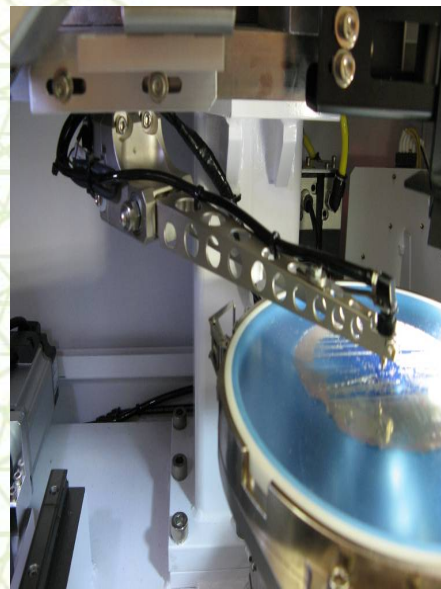
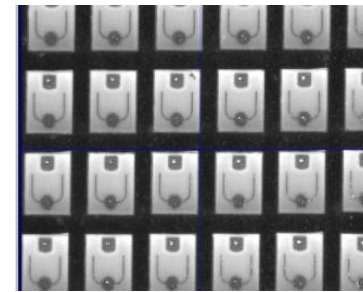
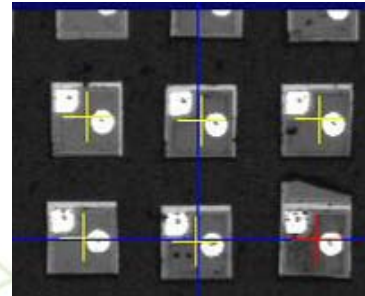
威控自動化機械股份有限公司  
WECON AUTOMATION CORP.  
新竹市城頂路99巷127號  
No.127, Alley 99, Pudin Rd., Hsinchu City, Taiwan  
TEL:886-3-5734757 FAX:886-3-5734760

www.wecon.com.tw

# LS-360 LED Sorter

Company Profile

## LS-360 LED Sorter





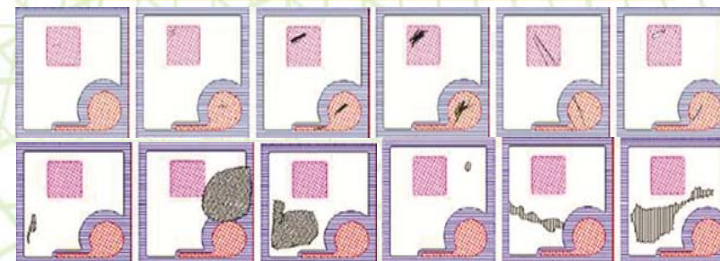
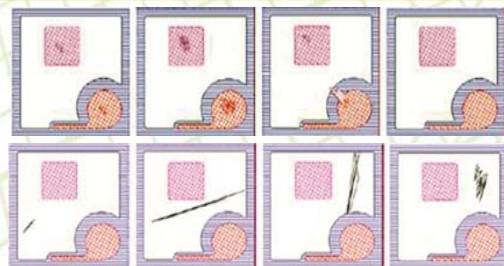
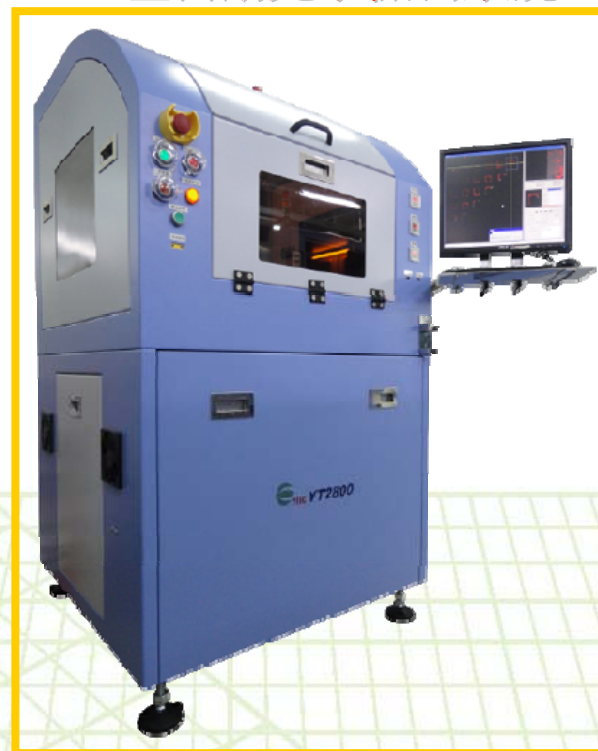
# 自動光學檢測系統 (Auto Optical Inspection)

Company Profile

**YT 5311 LED Chip/Wafer/Mask**  
半自動光學檢測系統



**YT 2800 LED Chip/Wafer/Mask**  
全自動光學檢測系統



# 自動光學檢測應用(AOI Application)

Company Profile

被動元件、LED  
產品六面外觀檢測



**YT2300**

元件六面外觀  
檢測機

**YT2330**

被動元件六面外觀  
檢測機

LED及被動元件散熱基板  
產品之外觀檢測



**YT2700**

LED及被動元件  
散熱基板之2D AOI  
檢測機



**YT2705**

LED及被動元件  
散熱基板之2D AOI  
檢測機  
(Auto Load/Unload)



YoungTek Electronics Corp.



# 自動光學檢測系統 (Auto Optical Inspection)

Company Profile

YT 2300(YT2330) Component AOI

自動光學檢測系統(雙軌)



## Reel type taped products:

- Resistor
- Capacitor
- Inductor
- LED
- IC
- Relay
- Connector
- Fuse



# LED Assembly Application Equipment

Company Profile





# DB-159 Die Bonder & YT2500 LED Dispenser

Company Profile

## DB-159 Die Bonder

## YT2500 LED Dispenser

DB-159 泛用型高速固晶机  
High Speed Multiple Applications Epoxy Die Bonder

UPH **15K**  
Cyc. Time 230ms

超宽工作行程: 120 x 280mm  
顶针自动测高, 防撞设计  
多种制程选择  
开放式参数设定



**WECON**  
威控自动化  
www.wecon.com.tw

DB-159

多制程选择

- ◆ 个别产程角度控制功能(图1)
- ◆ CAD程式输入档案功能(图2)
- ◆ 多晶圆功能(图3)
- ◆ 特殊点胶固晶功能(图4)
- ◆ 多型影像寻晶功能



影像辨识系统 (图5)

- ◆ 可执行外观检查标准: 3D测、PAD污染检查、缺角、破裂、氧化层污染检查
- ◆ 具有缺晶、掉晶检查功能
- ◆ 影像测料可空料控制
- ◆ 晶圆位置设定能以方形或圆形材料显示, 以提高设定精度 (图6)
- ◆ 晶圆旋转修正功能

规格(Specification)

制程速度 UPH	15K (SMD) 30K (裸晶, 无点 TSMC)	影像辨识系统 CCD	25K Die level / 100x100 pixel
Bonding accuracy	X: ±0.01, Y: ±0.01	Resolution	5.0 μm
Bonding zone	Max. 625 mm x 625 mm	载晶重量	100mg
晶片尺寸范围		载晶尺寸: 重量	Height: 100μm
Wafer Ring Dia	6" (152.4mm)	Dimension	1310mm x 1200mm x 1900mm
Working Range	±120mm (X/Y)	控制精度	
Die size	0.5mm - 8.0mm (10x10mm) 最大高度: 4mm	Power Req.	AC220V / 4A(Normal), 120V(110V) / 2200W
工作行程 Length	110" (2800mm)	Pneumatic source	5 kg/cm <sup>2</sup>
Height	4.7" (120mm)	Vacuum	0.5kg/cm <sup>2</sup> (0.5bar Vac. Pump)
产品重量 Weight	400kg		
载晶载具规格	Auto CCD x 11" LCD x X/Y/Z axis Stage		

威控自动化, 您的最佳选择

威控自动化机械股份有限公司  
WECON AUTOMATION CORP.

台湾新竹市城东路112号  
No.112, Alley 95, Fubin Rd, Hsinchu City, Taiwan  
TEL:886-3-2734757 FAX:886-3-2734760

www.wecon.com.tw



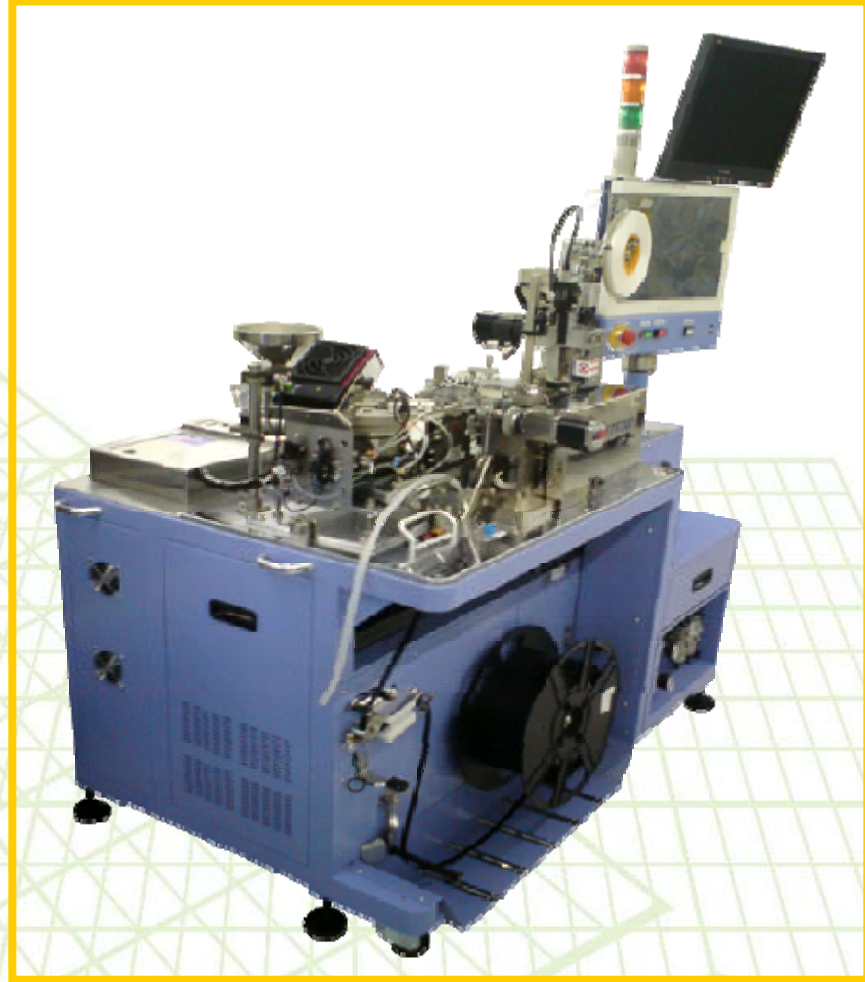
# YT6400 LED Handler & YT6300 LED Tapping

Company Profile

YT6400 LED Handler



YT6300 LED Tapping



YoungTek Electronics Corp.

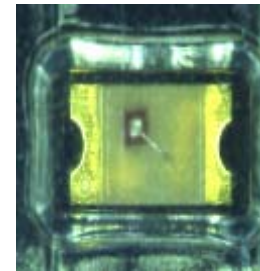


# 自動光學檢測系統 (Auto Optical Inspection)

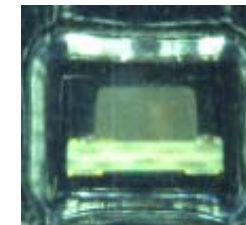
Company Profile

## YT 2210 Reel Type Components

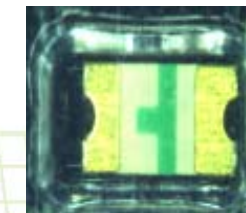
自動光學檢測系統



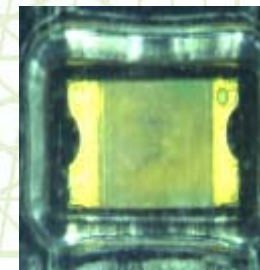
Polarity inverse package



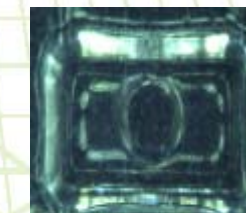
Tilt



Over turn



Mixed package



Empty

# Revenue Growth



# 2011 & 2012 Monthly Revenue

Company Profile  
NT\$(Thousand)

Business Item/Month		Jan.	Feb	Mar	Apr	May	Jun.	Jul.	Aug.	Sep	Oct.	Nov.	Dec.	Total	Share(%)
切割挑檢代工 Sawing & Sorting OEM	2011	99,641	107,086	131,677	124,662	130,566	128,825	127,673	103,794	98,761	94,537	89,523	81,498	1,318,243	47.21%
	2012	73,439	97,671	111,018	115,277	119,238	121,468	121,988	111,306	115,728	107,802	98,054	99,487	1,292,476	42.57%
	YoY	-26.30%	-8.79%	-15.69%	-7.53%	-8.68%	-5.71%	-4.45%	7.24%	17.18%	14.03%	9.53%	22.07%	-1.95%	
	MoM	-9.89%	33.00%	13.67%	3.84%	3.44%	1.87%	0.43%	-8.76%	3.97%	-6.85%	-9.04%	1.46%		
測試代工 Testing OEM	2011	80,684	66,395	115,541	101,928	110,180	86,142	85,536	90,520	78,549	86,727	91,049	86,508	1,079,759	38.67%
	2012	95,751	101,493	117,892	115,043	125,708	133,085	146,328	129,752	126,422	145,324	116,998	99,770	1,453,566	47.88%
	YoY	18.67%	52.86%	2.03%	12.87%	14.09%	54.49%	71.07%	43.34%	60.95%	67.56%	28.50%	15.33%	34.62%	
	MoM	10.68%	6.00%	16.16%	-2.42%	9.27%	5.87%	9.95%	-11.33%	-2.57%	14.95%	-19.49%	-14.73%		
機器組裝等產品銷售 Own Product Sales	2011	29,417	49,923	58,053	47,824	46,144	35,405	48,591	28,812	19,012	14,722	5,740	10,482	394,125	14.12%
	2012	5,011	5,077	21,899	29,823	83,454	39,695	32,838	12,097	17,374	22,869	9,982	9,819	289,938	9.55%
	YoY	-82.97%	-89.83%	-62.28%	-37.64%	80.86%	12.12%	-32.42%	-58.01%	-8.62%	55.34%	73.90%	-6.33%	-26.44%	
	MoM	-52.19%	1.32%	331.34%	36.18%	179.83%	-52.43%	-17.27%	-63.16%	43.62%	31.63%	-56.35%	-1.63%		
營業收入淨額 (Unit:K) Sales Revenue (Net)	2011	209,742	223,404	305,271	274,414	286,890	250,372	261,800	223,126	196,322	195,986	186,312	178,488	2,792,127	100.0%
	2012	174,201	204,241	250,809	260,143	328,400	294,248	301,154	253,155	259,524	275,995	225,034	209,076	3,035,980	100.0%
	YoY	-16.95%	-8.58%	-17.84%	-5.20%	14.47%	17.52%	15.03%	13.46%	32.19%	40.82%	20.78%	17.14%	8.73%	
	MoM	-2.40%	17.24%	22.80%	3.72%	26.24%	-10.40%	2.35%	-15.94%	2.52%	6.35%	-18.46%	-7.09%		
營業收入淨額(系 計) Sales Revenue (Total)	2011	209,742	433,146	738,417	1,012,831	1,299,721	1,550,093	1,811,893	2,035,019	2,231,341	2,427,327	2,613,639	2,792,127	--	--
	2012	174,201	378,442	629,251	889,394	1,217,794	1,512,042	1,813,196	2,066,351	2,325,875	2,601,870	2,826,904	3,035,980		
	YoY	-16.95%	-12.63%	-14.78%	-12.19%	-6.30%	-2.45%	0.07%	1.54%	4.24%	7.19%	8.16%	8.73%		
總計代工成長 OEM Growth (Total)	2011	180,325	173,481	247,218	226,590	240,746	214,967	213,209	194,314	177,310	181,264	180,572	168,006	2,398,002	--
	2012	169,190	199,164	228,910	230,320	244,946	254,553	268,316	241,058	242,150	253,126	215,052	199,257	2,746,042	
	YoY	-6.17%	14.80%	-7.41%	1.65%	1.74%	18.41%	25.85%	24.06%	36.57%	39.64%	19.09%	18.60%	14.51%	
	MoM	0.70%	17.72%	14.94%	0.62%	6.35%	3.92%	5.41%	-10.16%	0.45%	4.53%	-15.04%	-7.34%		

# 2012&2013 Combine Monthly Revenue

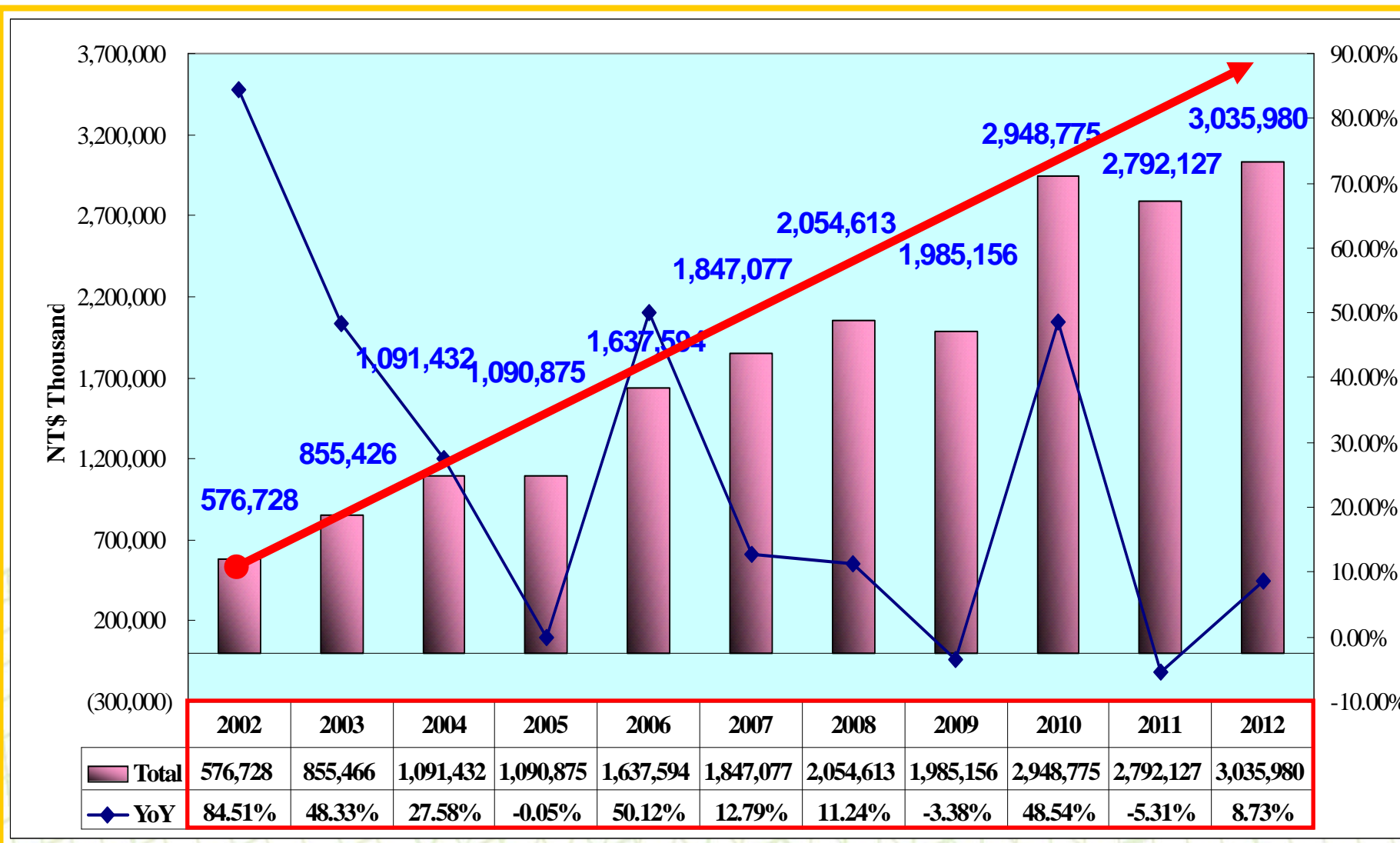
Company Profile  
NT\$(Thousand)

Business Item/Month	Jan.	Feb	Mar	Apr	May	Jun.	Jul.	Aug.	Sep	Oct.	Nov.	Dec.	Total	Share(%)
切割挑檢代工 Sawing & Sorting OEM	2012	74,341	100,273	114,355	119,873	124,099	126,741	129,216	119,084	127,305	119,713	112,670	1,267,670	36.87%
	2013	103,159	89,888	111,738	111,179	104,394	108,535	112,073	113,514	126,246	96,992	103,144	1,180,862	35.37%
	YoY	38.76%	-10.36%	-2.29%	-7.25%	-15.88%	-14.36%	-13.27%	-4.68%	-0.83%	-18.98%	-8.45%	-6.85%	
	MoM	#DIV/0!	-12.86%	24.31%	-0.50%	-6.10%	3.97%	3.26%	1.29%	11.22%	-23.17%	6.34%		
測試代工 Testing OEM	2012	127,925	145,751	155,306	178,992	193,854	192,035	208,696	184,208	166,191	180,667	156,769	1,890,394	54.98%
	2013	169,022	136,943	159,324	185,269	174,128	148,905	166,775	155,954	157,564	151,028	140,914	1,745,826	52.29%
	YoY	32.13%	-6.04%	2.59%	3.51%	-10.18%	-22.46%	-20.09%	-15.34%	-5.19%	-16.41%	-10.11%	-7.65%	
	MoM	#DIV/0!	-18.98%	16.34%	16.28%	-6.01%	-14.49%	12.00%	-6.49%	1.03%	-4.15%	-6.70%		
機器組裝等產品銷售 Own Product Sales	2012	5,011	5,077	21,899	29,823	83,454	39,695	32,838	12,097	17,374	22,869	9,982	280,119	8.15%
	2013	23,543	42,490	62,095	58,475	50,679	45,760	38,273	21,051	30,352	34,939	4,449	407,657	12.21%
	YoY	369.83%	736.91%	183.55%	96.07%	-39.27%	15.28%	16.55%	74.02%	74.70%	52.78%	-55.43%	45.53%	
	MoM	#DIV/0!	80.48%	46.14%	-5.83%	-13.33%	-9.71%	-16.36%	-45.00%	44.18%	15.11%	-87.27%		
營業收入淨額 (Unit: K) Sales Revenue (Net)	2012	207,277	251,101	291,560	328,688	401,407	358,471	370,750	315,389	310,870	323,249	279,421	3,438,183	100.0%
	2013	295,724	269,321	333,157	354,923	329,201	303,200	317,121	290,519	314,162	282,959	248,507	3,338,794	99.9%
	YoY	42.67%	7.26%	14.27%	7.98%	-17.99%	-15.42%	-14.47%	-7.89%	1.06%	-12.46%	-11.06%	-2.89%	
	MoM	#DIV/0!	-8.93%	23.70%	6.53%	-7.25%	-7.90%	4.59%	-8.39%	8.14%	-9.93%	-12.18%		
營業收入淨額(系 計) Sales Revenue (Total)	2012	207,277	458,378	749,938	1,078,626	1,480,033	1,838,504	2,209,254	2,524,643	2,835,513	3,158,762	3,438,183	--	--
	2013	295,724	565,045	898,202	1,253,125	1,582,326	1,885,526	2,202,647	2,493,166	2,807,328	3,090,287	3,043,070		
	YoY	42.67%	23.27%	19.77%	16.18%	6.91%	2.56%	-0.30%	-1.25%	-0.99%	-2.17%	-11.49%		
總計代工成長 OEM Growth (Total)	2012	202,266	246,024	269,661	298,865	317,953	318,776	337,912	303,292	293,496	300,380	269,439	3,158,064	--
	2013	272,181	226,831	271,062	296,448	278,522	257,440	278,848	269,468	283,810	248,020	244,058	2,926,688	
	YoY	34.57%	-7.80%	0.52%	-0.81%	-12.40%	-19.24%	-17.48%	-11.15%	-3.30%	-17.43%	-9.42%	-7.33%	
	MoM	#DIV/0!	-16.66%	19.50%	9.37%	-6.05%	-7.57%	8.32%	-3.36%	5.32%	-12.61%	-1.60%		



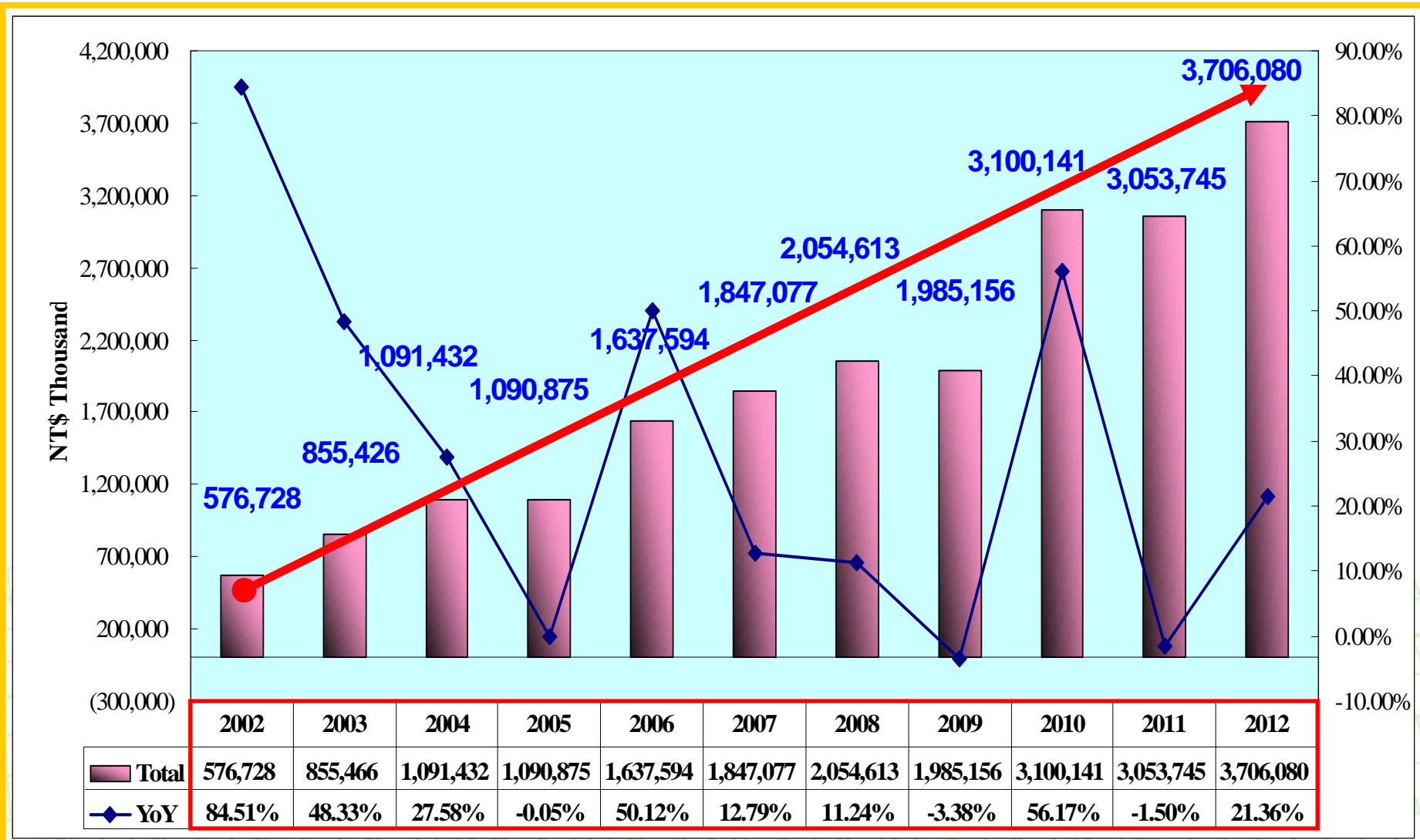
# 2002~2012 Revenue Growth

Company Profile



# 2002~2012 Combine Revenue Growth

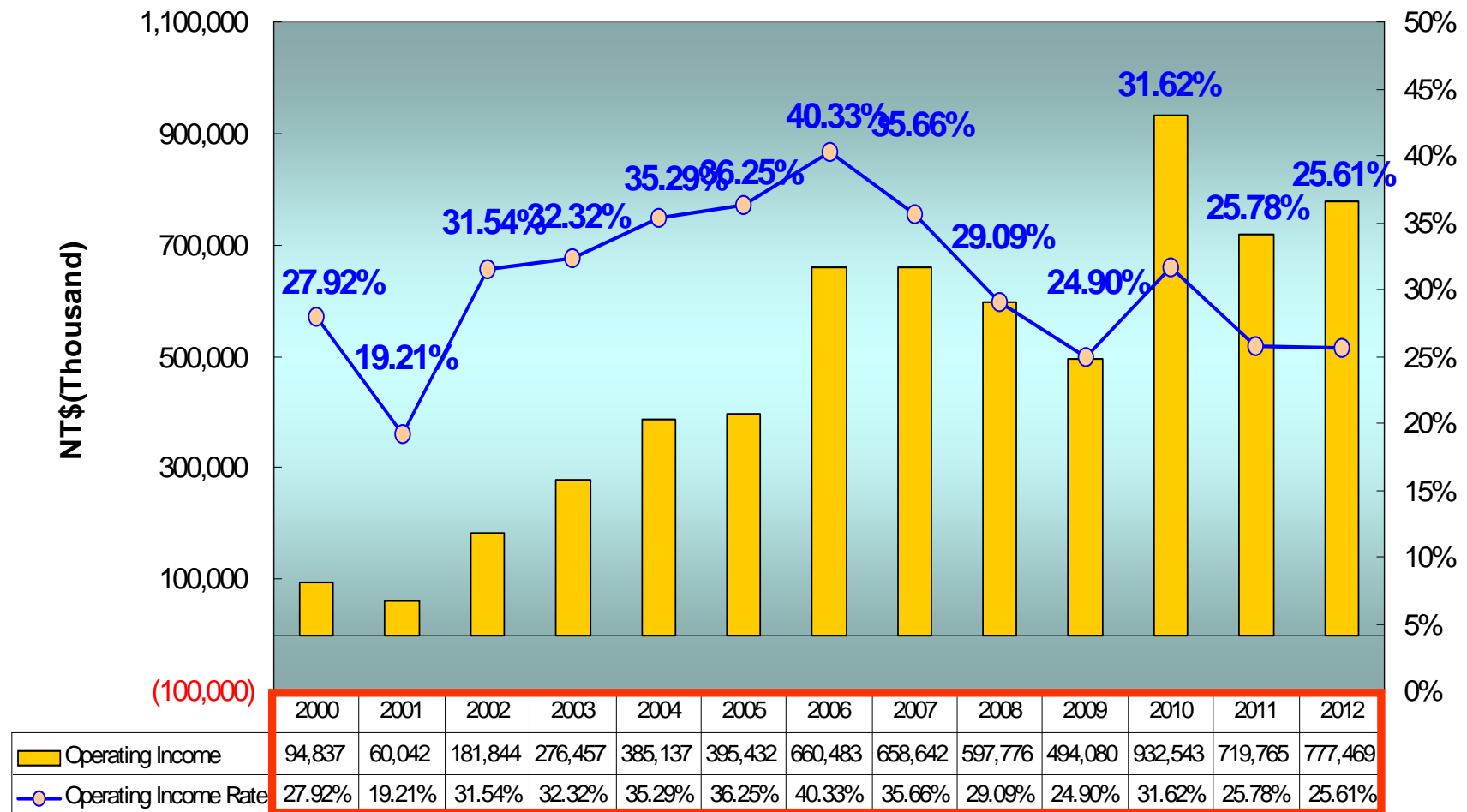
Company Profile





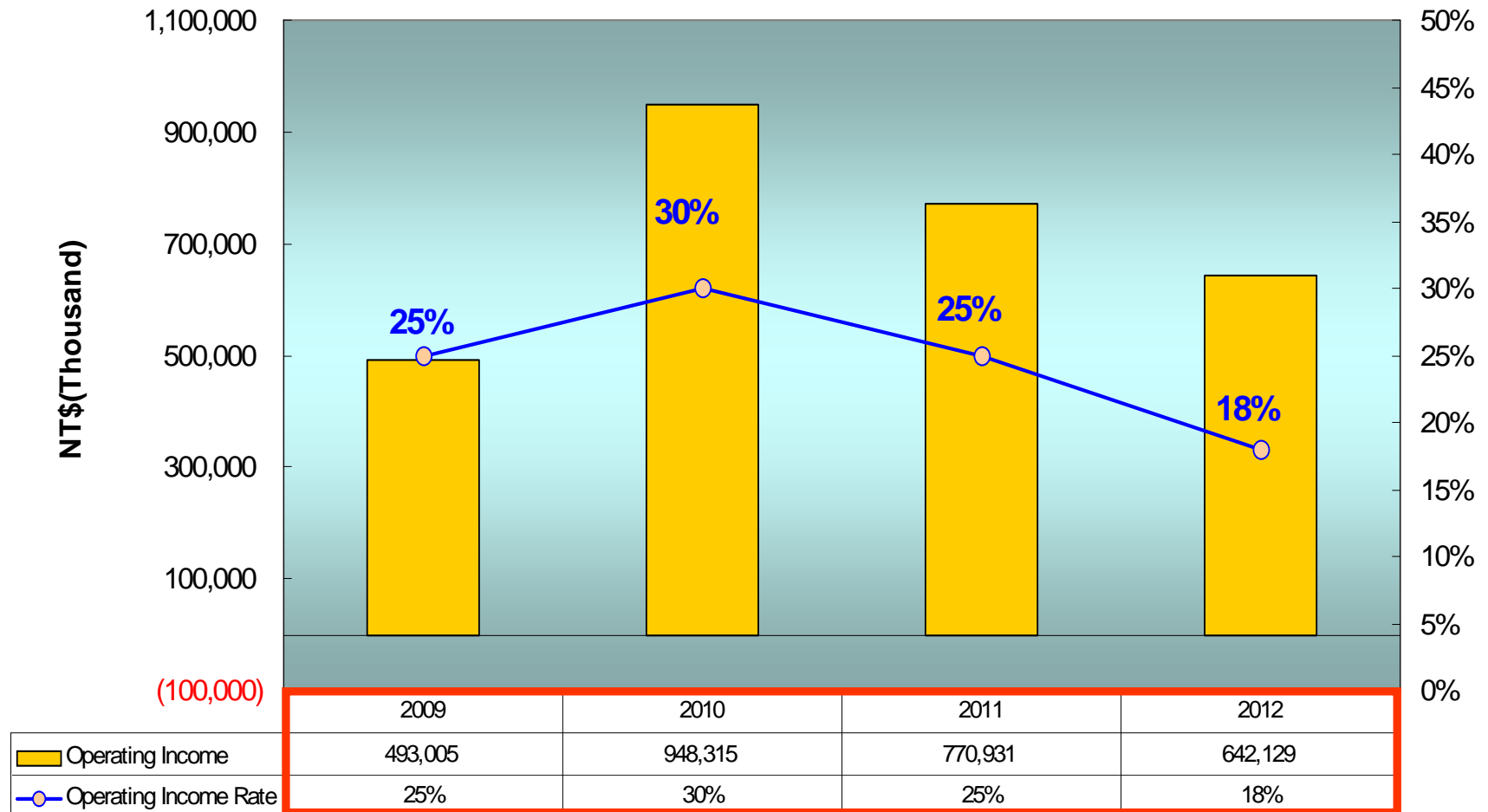
# 2000~2012 Operating Income

Company Profile



# 2009~2012 Combine Operating Income

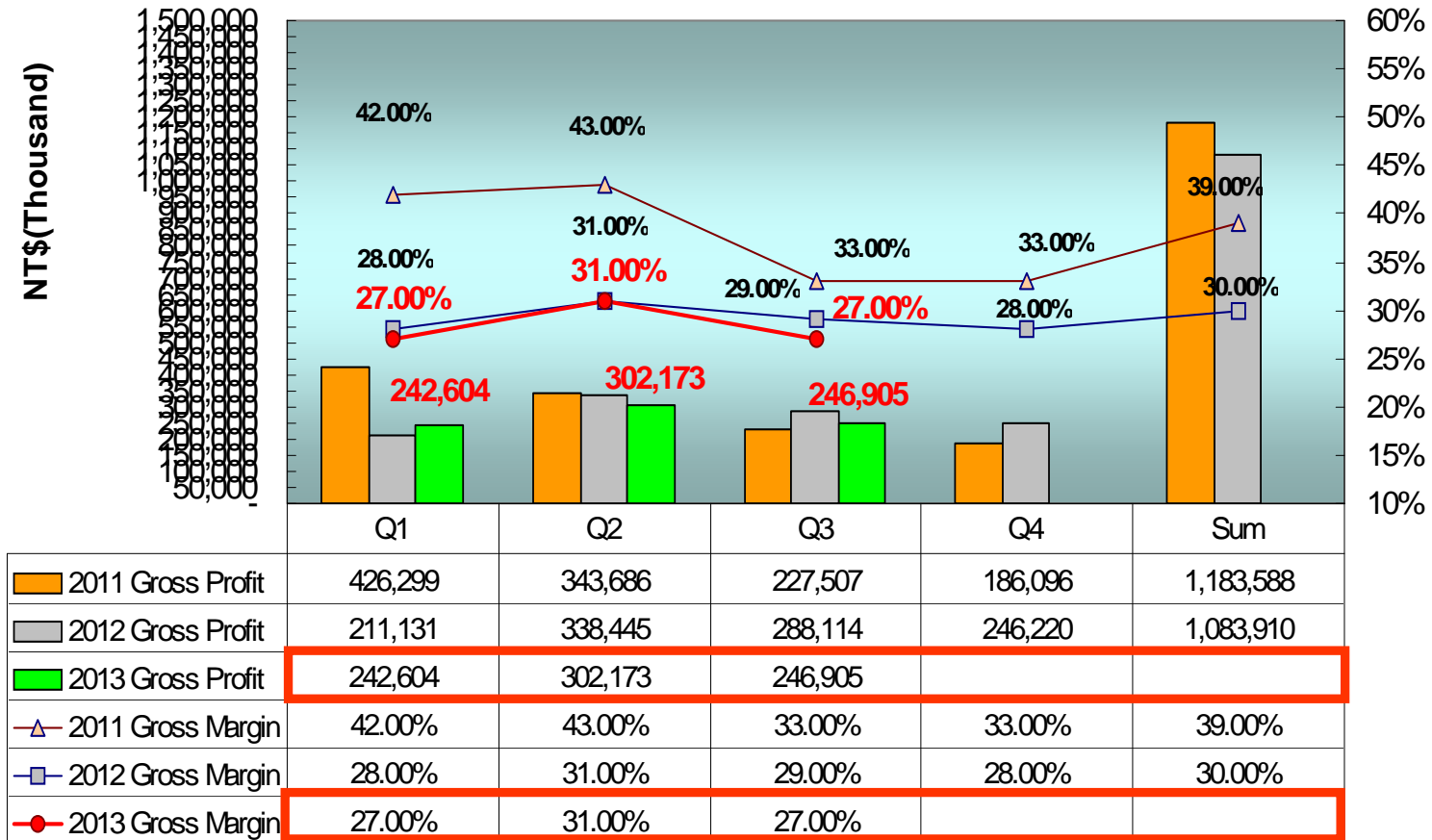
Company Profile





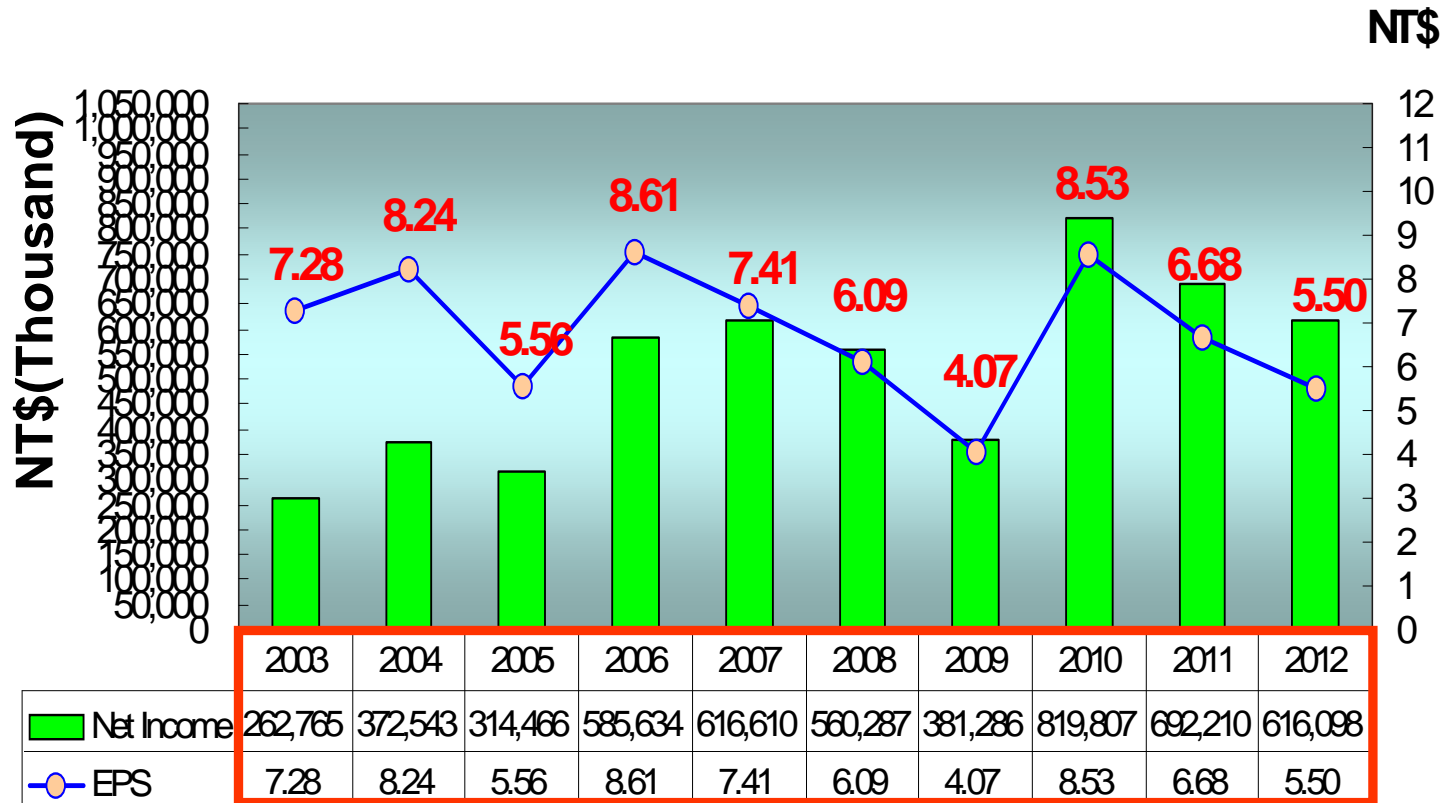
# 2011~2013 Combine Gross Profit

Company Profile



# Yearly Net Income & EPS

Company Profile





# Business Expansion Status(相關產業之狀況)

Company Profile

- 半導體及光電切挑代工服務：進入2013年母公司11月份業績、MOM成長6.3%、符合預期、因此將持續追蹤、另LED在新的應用提昇下樂觀預期在LED挑檢已擴充之產能應可適時提供市場成長之需求、相信可挹助公司之營收成長。
- IC測試系統開發：2006年3月份與美商安捷倫(Agilent)科技(新公司名稱: Verigy惠瑞捷)簽訂IC測試系統技術合作、除了2006年已陸續支付久元簽約金而達成階段性目標、因而提昇公司營收和獲利。另已在雙方合作互動下提昇測試機技術層次及銷售量、更上層樓。
- CIS、CCM、LED後段生產設備及AOI設備開發：成功開發完成CIS(CMOS影像感測系統)、具備高速影像處理及完整電性測試之解決方案、並導入代工服務、挹助營收。自行開發之CCM(影像感測模組測試設備)、LED後段生產設備及AOI(自動光學檢測系統)等設備、因應市場需求將擴展銷售、AOI設備研發係以解決半導體及光電等產業在目檢之視覺盲點並可大幅節省人力、並已將光電技術結合影像分析等與自動化設備設計、成功研發出各類型外觀檢測機。11月業績MOM成長-87.3%累計1-11月YOY成長45.9%創前11月歷史新高、符合預期因此將持續追蹤、相信在持續開發新產品及功能提昇下、展望未來應可持續挹助業績成長之動力。
- 半導體代工服務：進入2013年11月業績MOM成長-6.7%、因此將持續追蹤、而YTEC在持續開發新產品與互補及平衡的產品線發酵下(如LCD,RF..etc)、展望未來應可持續挹助業績成長之動力。

# Share payout composition and history

Company Profile

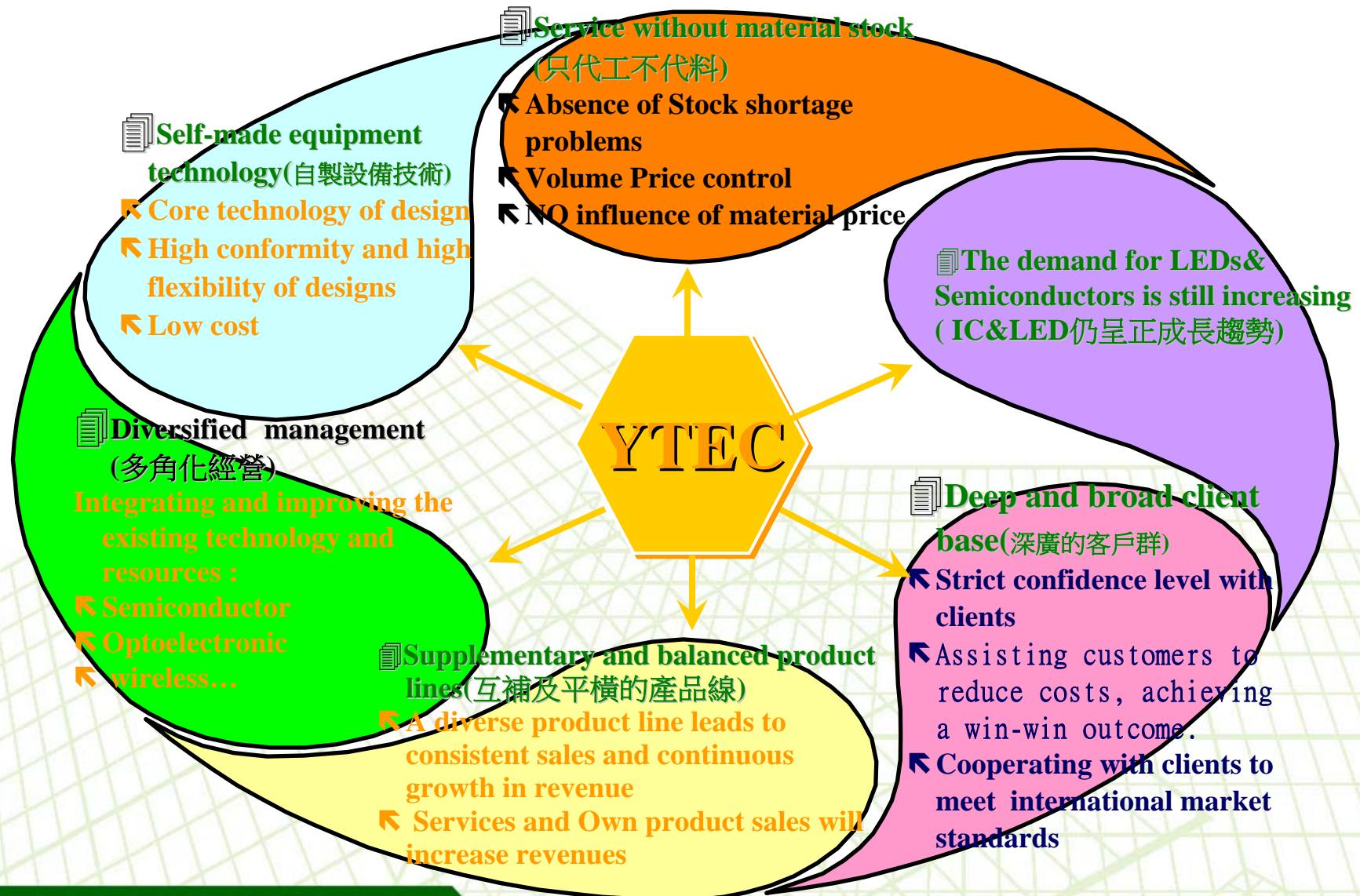
Year	95年度 (2006)	96年度 (2007)	97年度 (2008)	98年度 (2009)	99年度 (2010)	100年度 (2011)	101年度 (2012)	102年度 (2013)
	西94年度 profit(2005)	西95年度 Profit(2006)	西96年度 Profit(2007)	西97年度 Profit(2008)	西98年度 Profit(2009)	西99年度 Profit(2010)	西100年度 Profit(2011)	西101年度 Profit(2012)
Cash(NTD)	\$2.61	\$4.00	\$4.00	\$3.00	\$3.00	\$4.671	\$5.238	\$4.659
Free Pair stock of	\$0.87	\$1.00	\$0.50	\$0.10	\$0.10			0.098
Stock Capital reserve fund	--	--	--	--	--	\$0.093	\$0.095	--
EPS(NTD)	\$5.56	\$8.61	\$7.41	\$6.09	\$4.07	\$8.53	\$6.68	\$5.50





# Company competitive advantages

Company Profile



YoungTek Electronics Corp.

# 公司願景 **Company Mission**

*Company Profile*

著眼於國內外市場的開拓，讓久元成為立足台灣的整合性後段IC及LED代工服務廠，並朝放眼世界的自有產品、自有品牌邁進。

Based on the domestic and international marketing development, YTEC has gotten a foothold as an integrated back-end IC&LED OEM factory. YTEC moves forward, with it's own products, and Own Bench Marks.





Q & A

*Company Profile*

Thank you very much



**YTEC** YoungTek Electronics Corp.