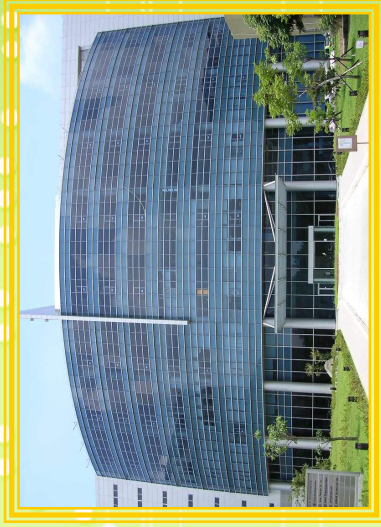
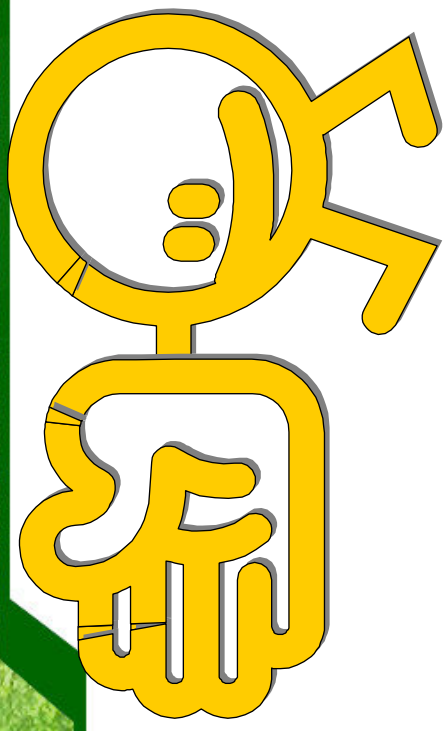


Welcome



Welcome



YoungTek Electronics Corp.

Stock No: 6261

Brief Introduction

Spokesman : Tony Liu
Date : 10 April, 2012



YTEC YoungTek Electronics Corp.

2012 VISIT SCHEDULE @久元

Company Profile

Contents

Time

- | | |
|---|-------------|
| <input type="checkbox"/> Brief Introduction of YTEC | 14:00~14:20 |
| <input type="checkbox"/> Q & A | 14:20~15:30 |
| <input type="checkbox"/> Line Tour (Free) | 15:30~16:00 |



YTEC YoungTek Electronics Corp.

Contents

Company Profile

- **Brief Introduction**
- **Factory Overview**
- **Company Milestone**
- **Company Management Concept**
- **OEM Services**
- **R&D Roadmap and Own Product Development**
- **Revenue Growth**
- **Company Mission**



YTEC *YoungTek Electronics Corp.*

Brief Introduction

Company Profile

Found Time : 1991/July

Chairman : Bily Wang

President of Service Group : Jeff Chang

President of Own Product Group : Glen Chen

Employees : 992

Capital : NTD 1065 million (USD 35.5 million)

Address : Plant 1(1F~5F) : Special & substrate sawing

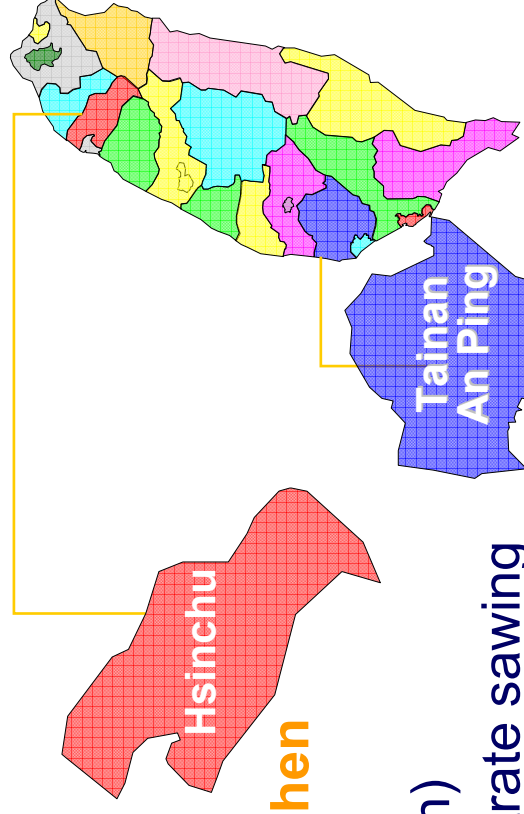
An Ping Plant (3F) : LED sorting & testing

Li Hsin Plant (2~3F、5~6F) : LED back-end turn-key service

SBIP Plant (1~4F、7F) : IC back-end turn-key service, ATE&AOI

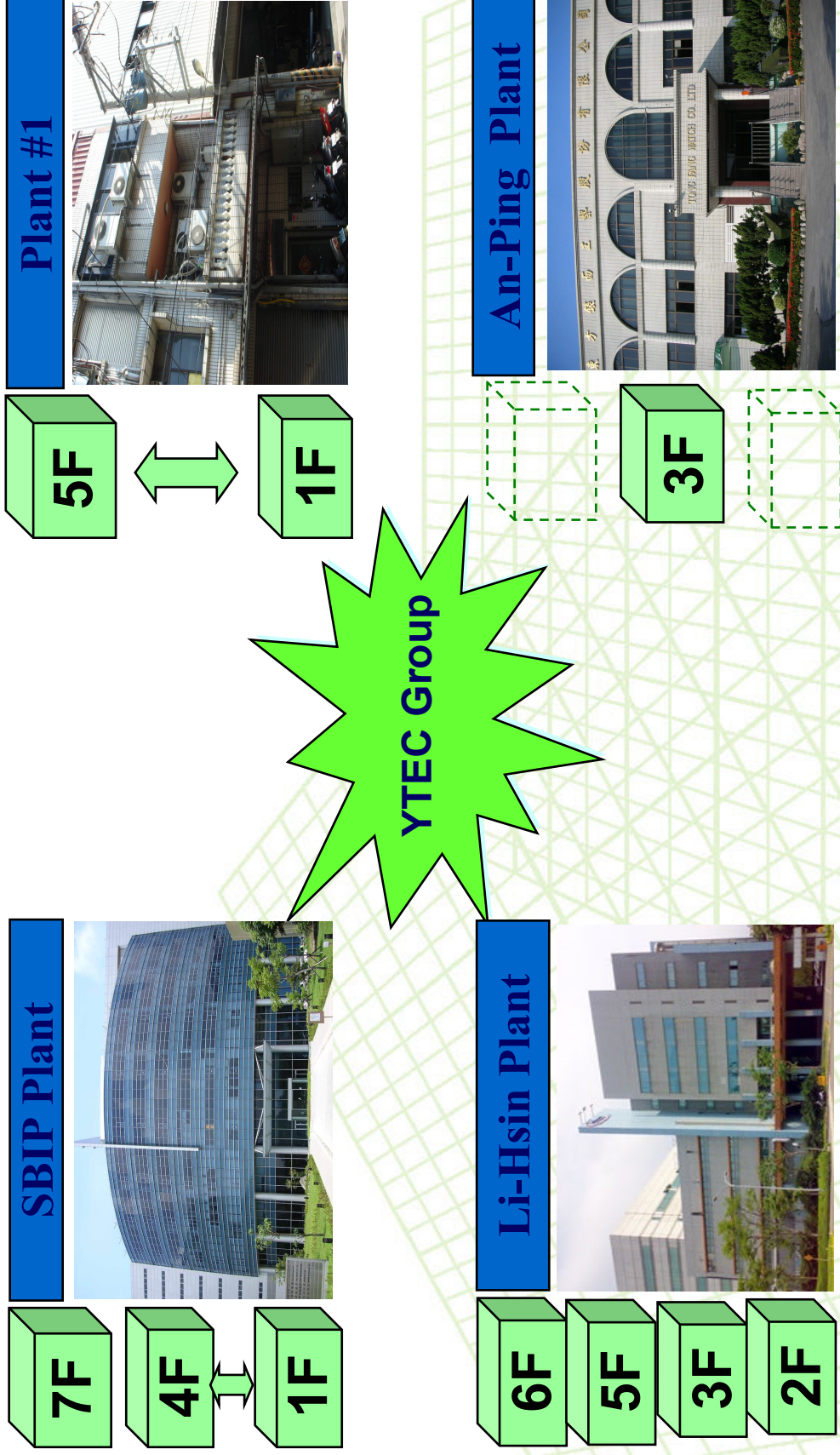
Business Items :

- Semiconductor and LED OEMs**: Wafer sawing, grinding, sorting and IC testing, LED testing, laser scribing, sorting and substrate sawing.
- Design, manufacture and sales of semiconductor equipments**: CIS/CCM equipments, AOI system, full-function IC tester, logic IC tester, analog IC tester, Mixed-Signal IC Tester , LED tester, prober and sorter.



Factory Overview

Company Profile



YoungTek Electronics Corp.

Company Milestone

Company Profile

- 1991/Jul. YTEC was founded and the capital is NTD \$ 5 million.
- 1998/Oct. Develop logic tester (Goblin) with 5 MHz/40 pins.
- 2000/Mar. Achieved the certification of ISO 9001
- 2000/Jul. Full-function IC tester was verified by industry agency with predominant product development project.
- 2002/Nov. SEC (Securities and Exchange Commission) approve YTEC to public stock.
- 2003/Nov. LED OEM service was established.
- 2003/Dec. Obtain OTC certification.
- 2004/Mar. Got the approval to establish the branch in Hsin chu SBIP.
- 2004/Mar.29 Listed in Taiwan stock exchange. (Stock No.: 6261)
- 2006/Dec. Achieved the certification of ISO 14001 and OHSAS 18001.
- 2007/Jul. Develop Tainan An Ping plant for LED sorting.
- 2007/Nov. Build up AOI key technologies and business.
- 2008/May Develop Li Hsin plant for LED test & sorting.
- 2008/Otc. Achieved the certification of ISO/TS 16949.
- 2009/Jun. Solar silicon substrate inspection system was verified by Science Park Administration with development project.
- 2010/Mar. Develop SBIP plant for wafer grinding & sawing.
- 2011/Jan. Achieved the certification of IECQ QC080000.



YTEC YoungTek Electronics Corp.

Company Management Concept

Company Profile

經營理念：(Management Concept)

主人翁經營理念；下工程即是客戶。

Treat YTEC as your own company. (Host concept)

Treat all post projects and processes as our customers.



工作態度：(Working Attitude)

成功者找方法；失敗者找藉口。

A successful person will find the way to overcome a challenge

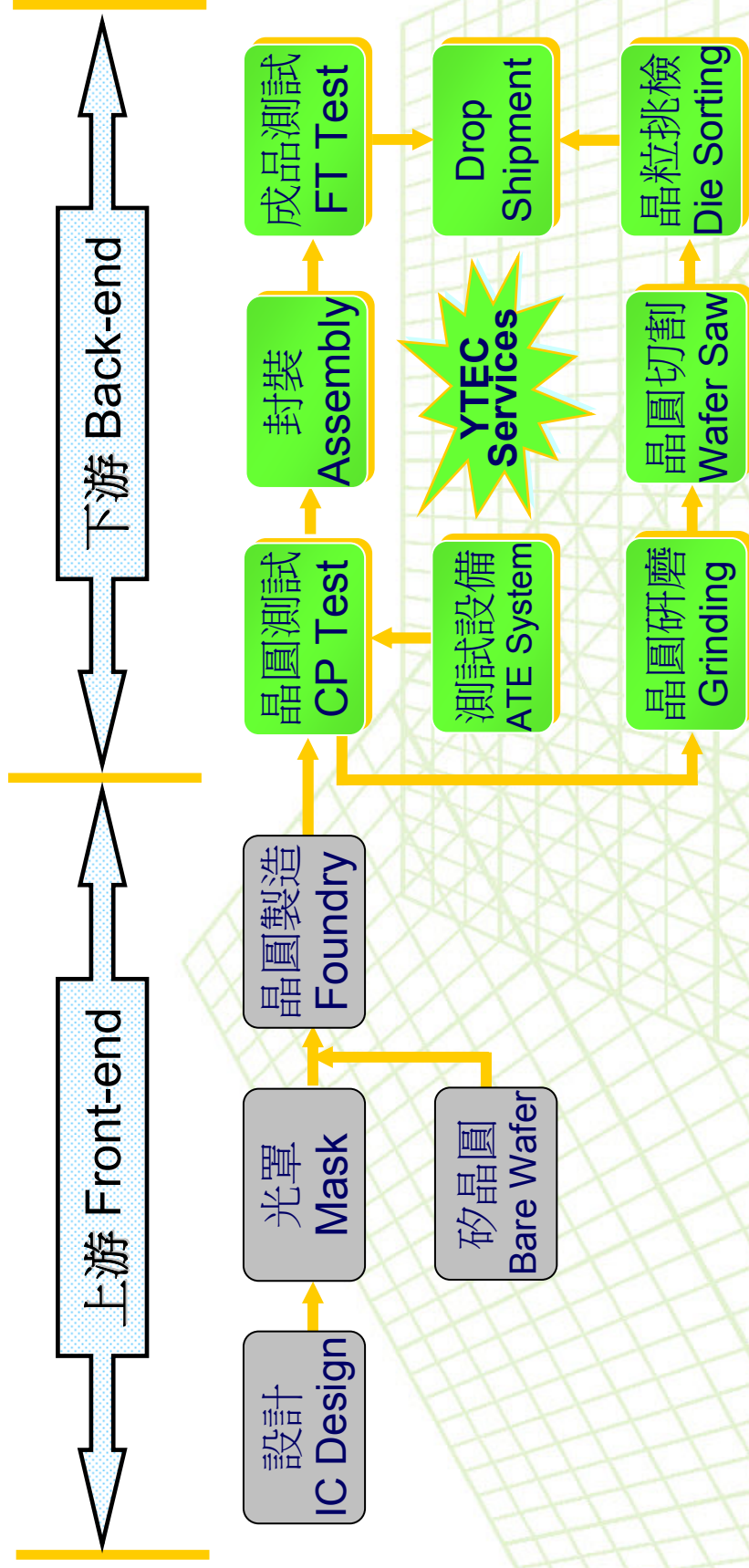
Loser finds excuses.



YTEC YoungTek Electronics Corp.

IC OEM Services

Company Profile

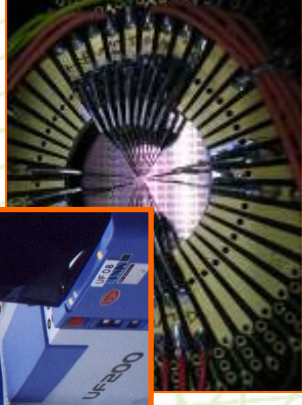
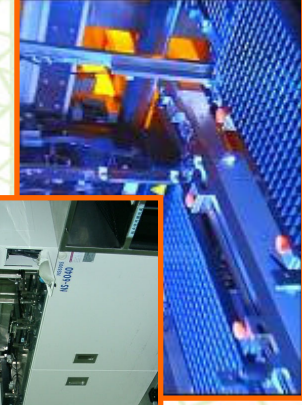
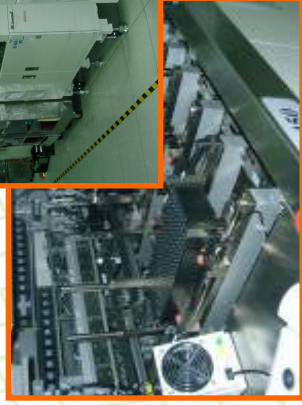
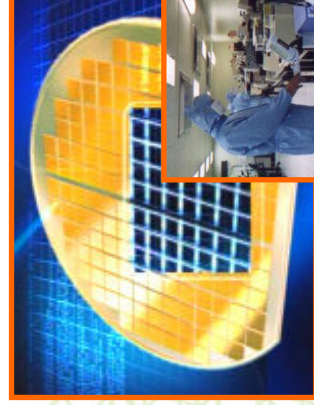
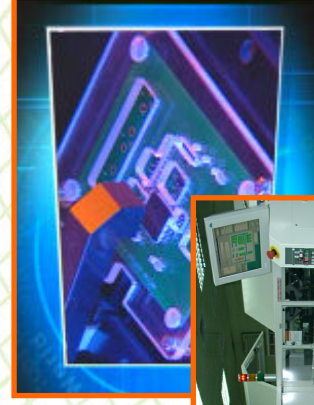
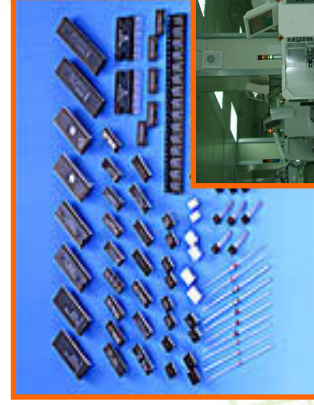


YTEC YoungTek Electronics Corp.

專業測試代工服務(IC Testing OEM)

Company Profile

- ❑ 4"~12" Wafer testing (CP)、Test program and test kit development (Probe-card design and manufacture).
- ❑ IC packaging testing (FT)、Package type : DIPs、T/SOPs、L/QFPs、QFN、L/BGA...
- ❑ PC peripheral product、Logic、Analog、Mixed-signal、No-volatile memory、MCU、LCD driver IC、High speed/ High pin count (Scud-1A 512C) testing.
- ❑ CIS(CMOS Image Sensor)、RF、SoC product testing
- ❑ Others : Laser trimming、Lead scanning、Test program and test kit development technical support **Turn-key service** (For example: PKG assembly、Tape-reel、Drop-shipment...).



研磨、切割及挑檢代工服務 (Grinding, Sawing, P&P Service)

Company Profile

□ Service Items:

Wafer back-side grinding sawing chip pick & place services for Consumer and gold bump products.

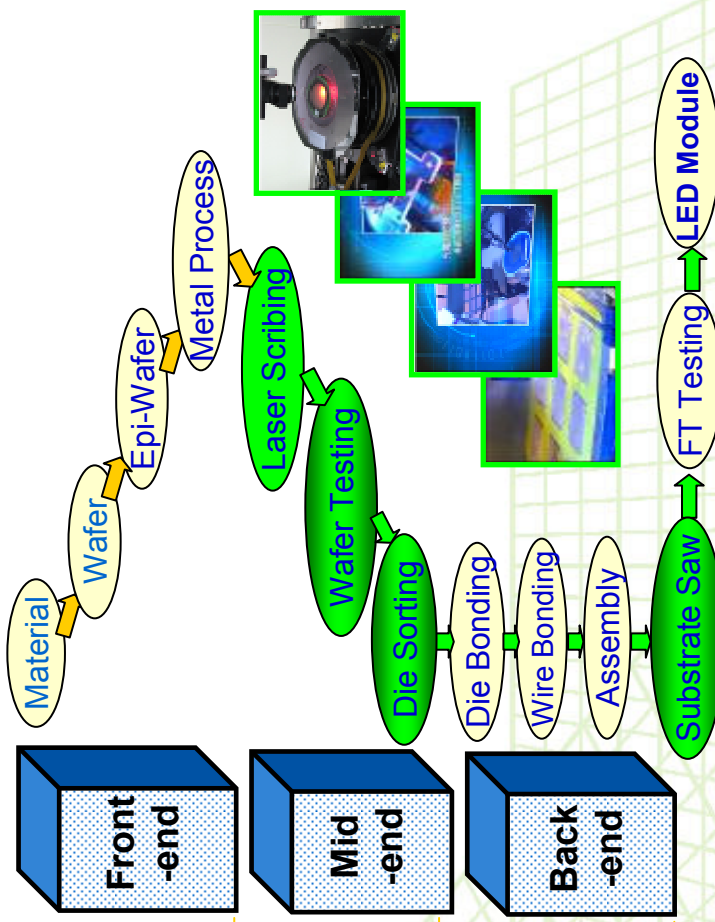
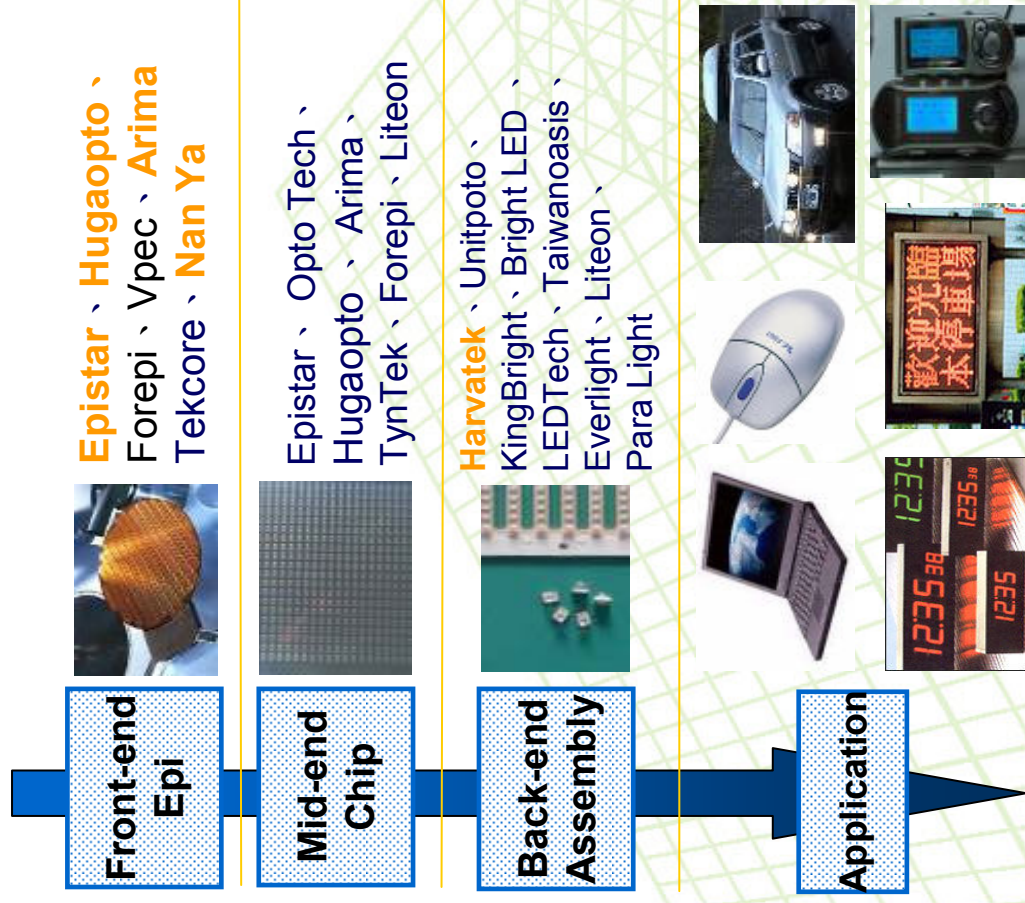
Process	Back-side Grinding	Sawing	Pick & Place
Environment			
Capability	<p>Class 1K</p> <ul style="list-style-type: none"> ● 4"~12" Wafer ● Back-side Grinding ● 8"~12" Wafer ● Polish Solution ● Wafer TTV $\leq 5 \mu m$ ● Chip TTV $\leq 2 \mu m$ 	<p>Class 1K</p> <ul style="list-style-type: none"> ● 4"~12" Wafer Sawing ● Dual Cutting Function ● High-pressure & Atomizing Cleaning System (二流體清洗裝置) ● Dust Collecting System 	<p>Class 100</p> <ul style="list-style-type: none"> ● 4"~12" Wafer ● Pick & Place ● Map and Ink ● Pick & Place Solution ● Chip Back-side AOI ● Inspection System



YoungTek Electronics Corp.

LED OEM Services

Company Profile



- **Front-end Product** : Wafer, Epi-Wafer, For example GaAs, GaAsP, AlGaAs, AlGaInP
- **Mid-end Product** : Laser Scribing, Wafer Testing and Pick & Place Die-sorting
- **Back-end Product** : Lamp, Display, SMD, IR transmission module, Optical Communication product, Substrate Saw



YoungTek Electronics Corp.



Company Profile

Own Product Development



YTEC YoungTek Electronics Corp.

YT5100&Scud-1A IC Tester

Company Profile

YT5100 High Speed Soc IC Tester



Scud-1A Fully Auto IC Tester



Scud-1A IC Tester System Environment

Company Profile

The screenshots illustrate the comprehensive software environment for the Scud-1A IC Tester. Key components include:

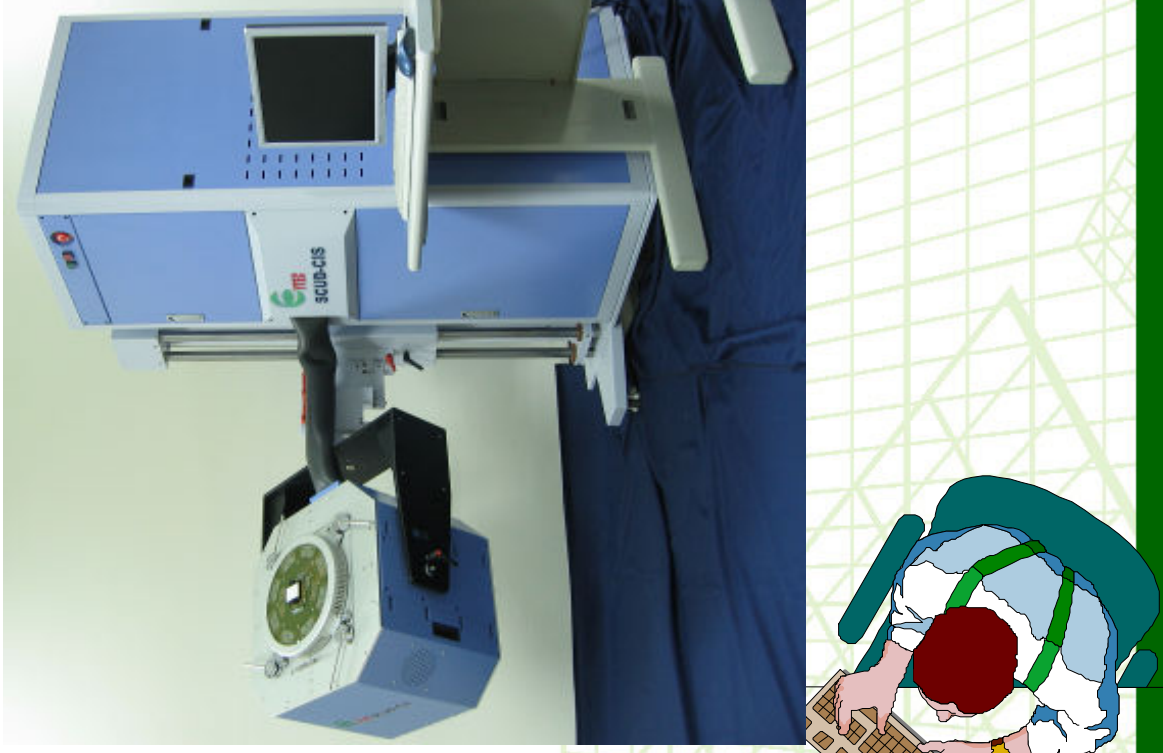
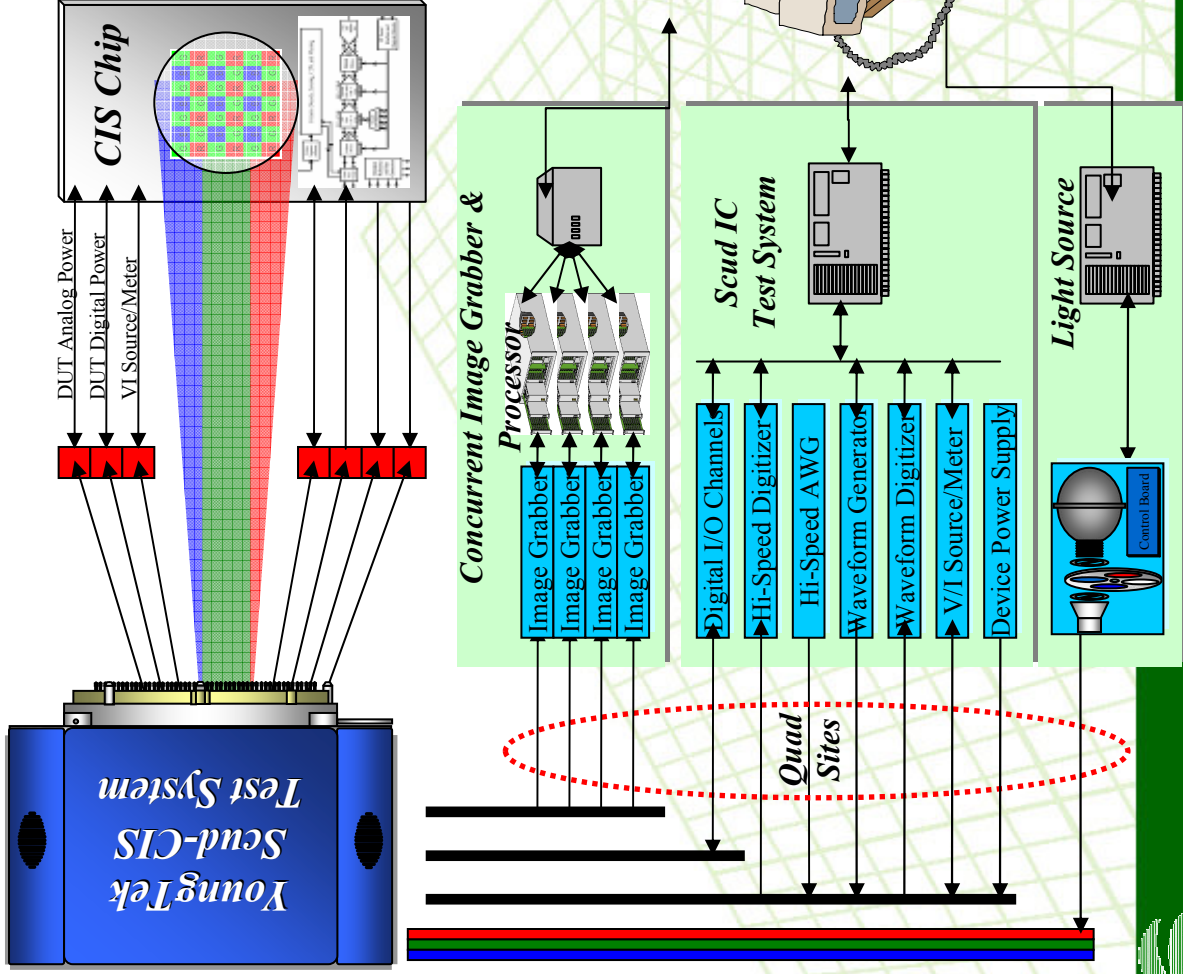
- Main Control Interface:** Features a large grid of colored LEDs (red, green, blue, yellow) representing the test results for various pins or components.
- TEST PROGRAM ZIP2:** A dialog box for loading and configuring test programs.
- Load Form:** A dialog box for selecting components to be tested, such as ANPEC, AUL3689, and BeCo.
- Test Data:** A window displaying a circular LED array, likely representing the physical layout of the IC being tested.
- Test Program:** A window showing a list of test steps and parameters.
- Test Results:** A window displaying a table of test results, including component names, test numbers, and pass/fail status.
- Test Log:** A window showing a detailed log of test results, including component names, test numbers, and pass/fail status.
- Test Summary:** A window displaying a table of test results, including component names, test numbers, and pass/fail status.

YoungTek Electronics Corp.



CIS(CMOS Image Sensor) IC Tester

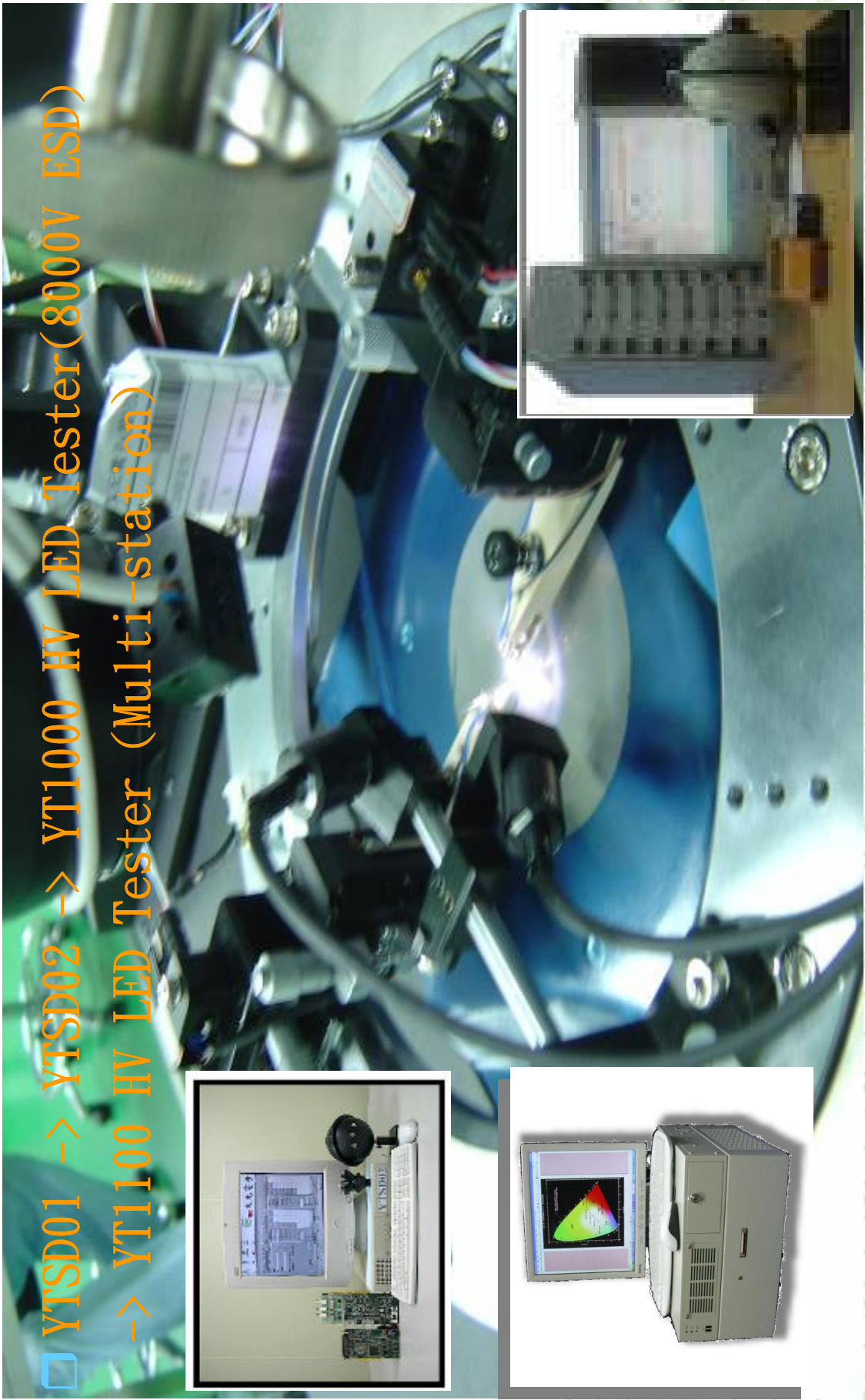
Company Profile



YT1100 LED Tester(YT1100 LED 測試機)

Company Profile

- YTSD01 -> YTSD02 -> YT1000 HV LED Tester(8000V ESD)
- > YT1100 HV LED Tester (Multi-station)



YoungTek Electronics Corp.

CCM(CMOS/Compact Camera Module)

Company Profile

CCM Test System YT3100



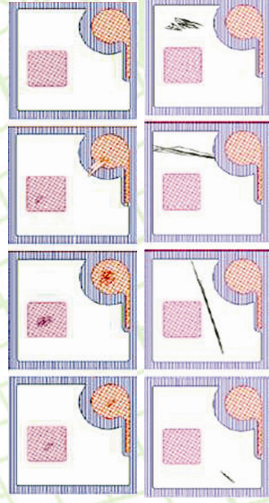
Fully Auto CCM Test System YT3300



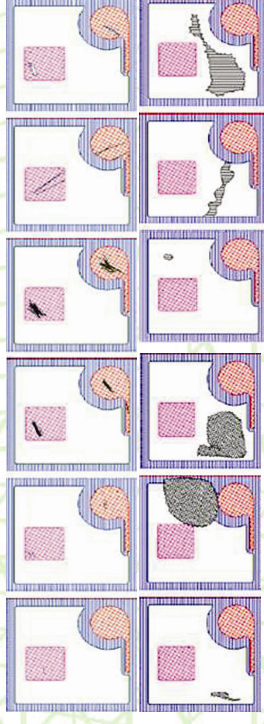
Auto Optical Inspection (自動光學檢測系統)

Company Profile

**YT 5311 LED Chip/Wafer/Mask
AOI System**



**YT 2800 LED Chip/Wafer/Mask
AOI System**

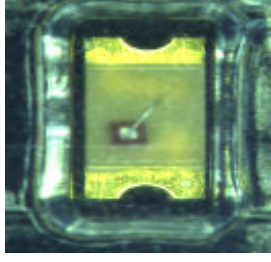
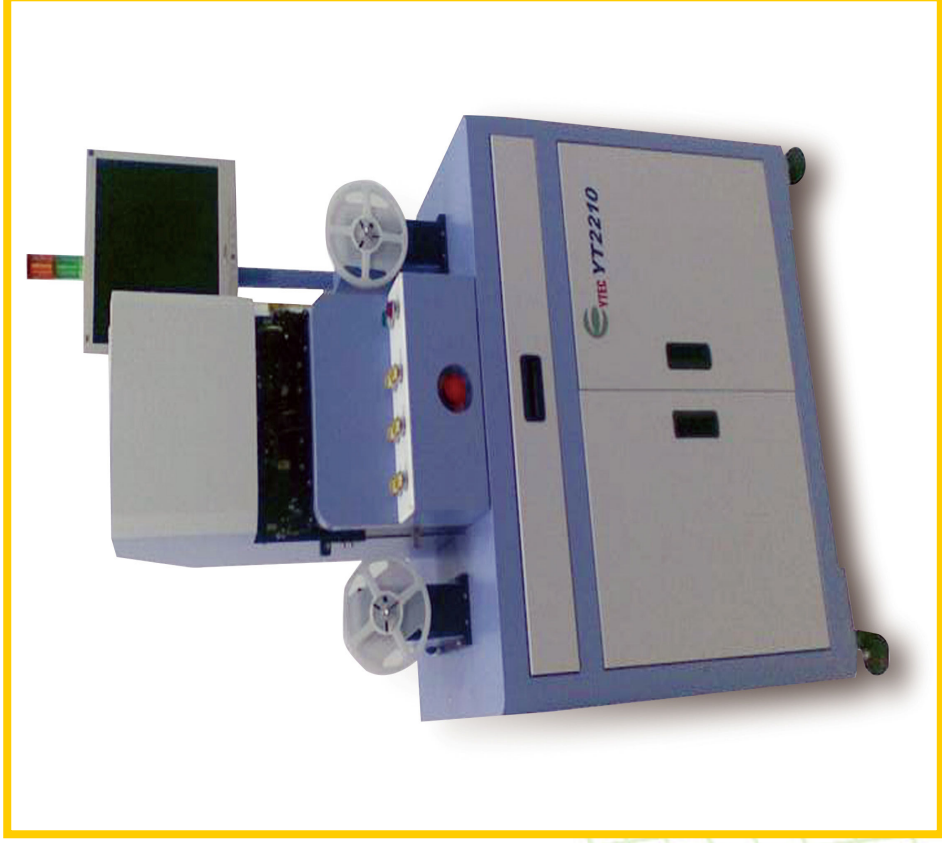


YoungTek Electronics Corp.

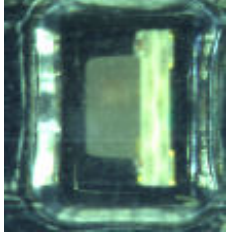
Auto Optical Inspection (自動光學檢測系統)

Company Profile

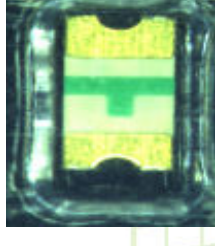
YT 2210 Reel Type Components AOI System



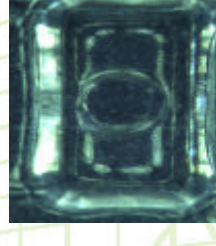
Polarity inverse package



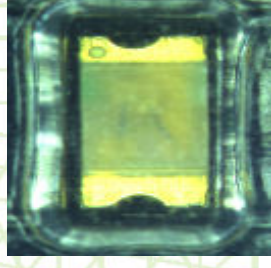
Tilt



Over turn



Empty



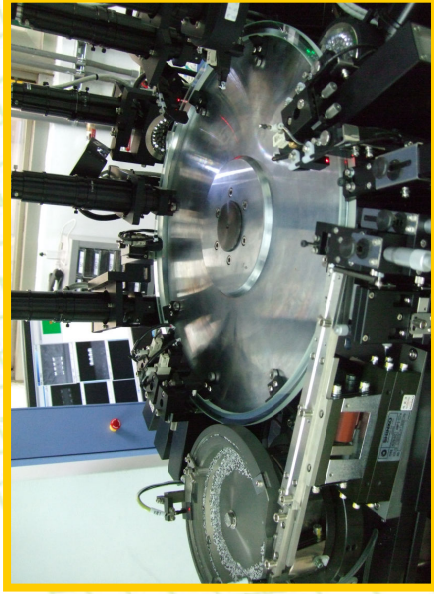
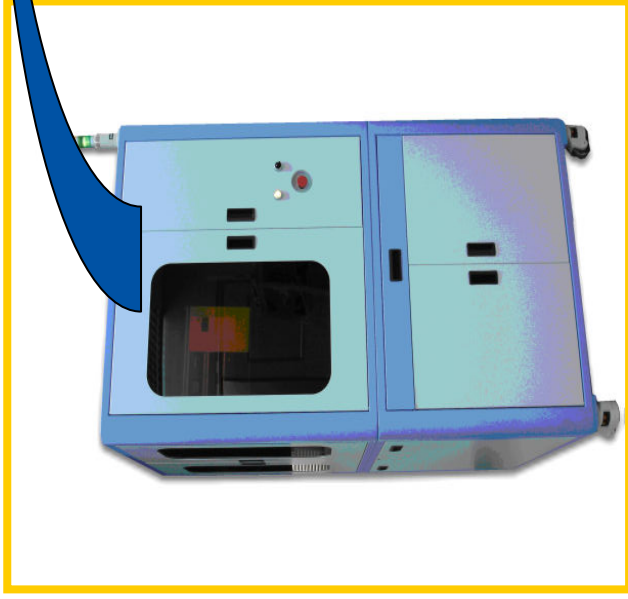
Mixed package



YTEC YoungTek Electronics Corp.

Auto Optical Inspection Application

Company Profile



Reel type taped products:

- Resistor
- Capacitor
- Inductor
- LED
- IC
- Relay
- Connector
- Fuse



YoungTek Electronics Corp.

YT2500 LED Dispenser / YT6110 IC Test Handler

Company Profile

YT2500 LED Dispenser



YT6110 IC Test Handler

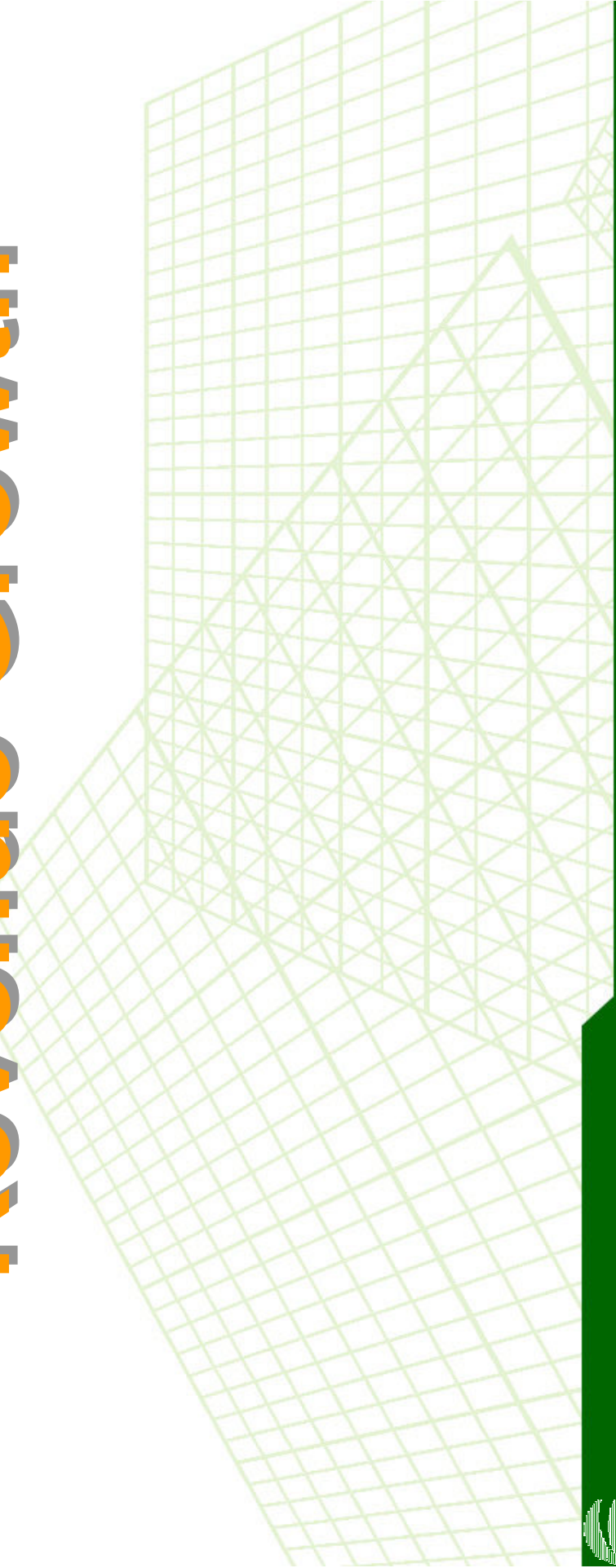


YoungTek Electronics Corp.



Company Profile

Revenue Growth



YTEC YoungTek Electronics Corp.

2011&2012 Monthly Revenue

Company Profile

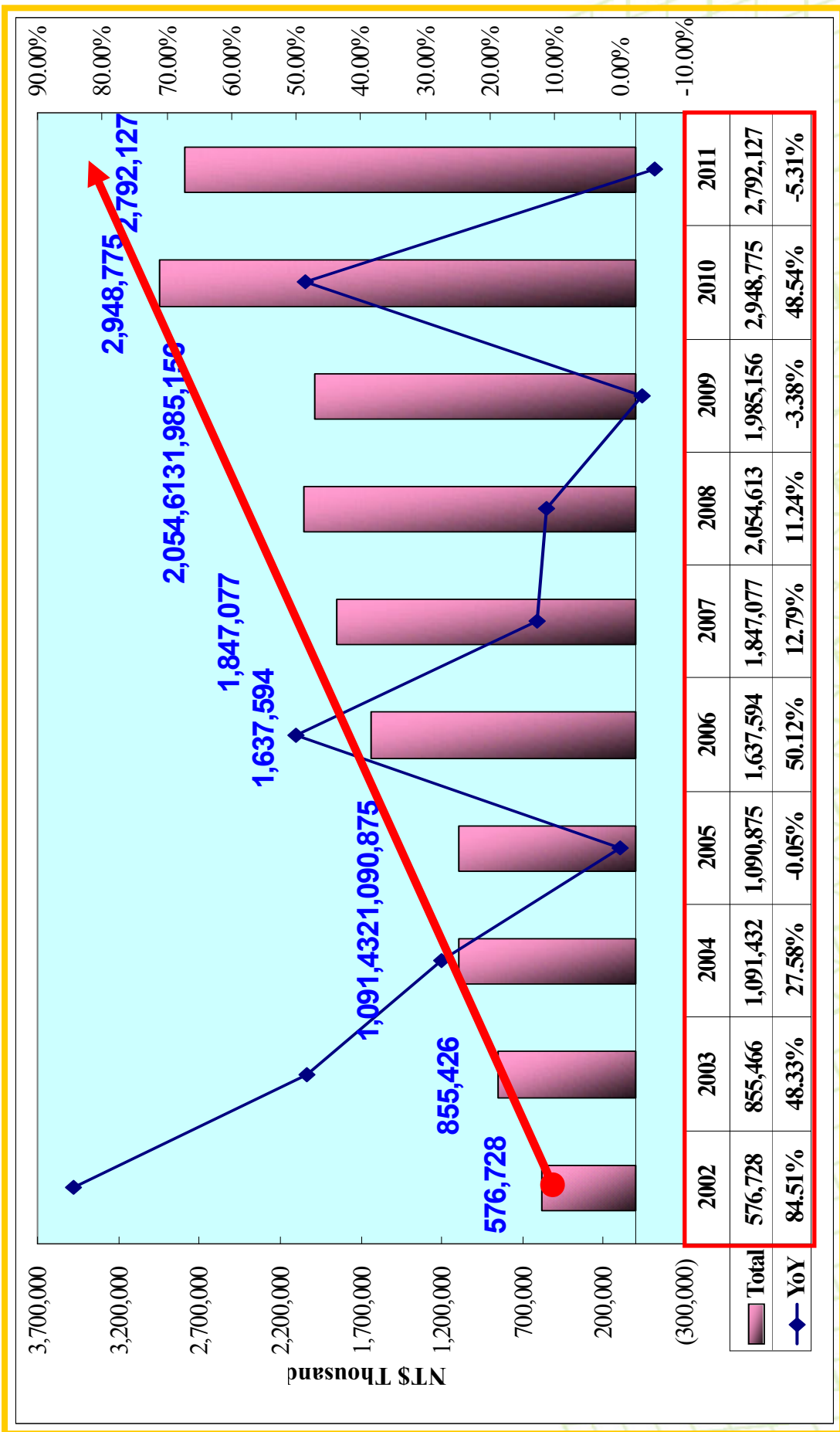
NT\$(Thousand)

Business Item/Month	Jan.	Feb	Mar	Apr	May	Jun.	Jul.	Aug.	Sep	Oct.	Nov.	Dec.	Total	Share(%)	
切削/拋檢代工 Sawing & Sorting OEM	2011	99,641	107,086	131,677	124,662	130,566	127,673	103,794	98,761	94,537	89,523	81,498	338,404	45.83%	
	2012	73,439	97,671	111,018									282,128	44.84%	
	YoY	-26.30%	-8.79%	-15.69%										-16.63%	
	MoM	-9.89%	33.00%	13.67%											
測試代工 Testing OEM	2011	80,684	66,395	115,541	101,928	110,180	85,536	90,520	78,549	86,727	91,049	86,508	262,620	35.57%	
	2012	95,751	101,493	117,892									315,136	50.08%	
	YoY	18.67%	52.86%	2.03%										20.00%	
	MoM	10.68%	6.00%	16.16%											
機器組裝等產品 銷售 Own Product Sales	2011	29,417	49,923	58,053	47,824	46,144	48,591	28,812	19,012	14,722	5,740	10,482	137,393	18.61%	
	2012	5,011	5,077	21,899									31,987	5.08%	
	YoY	-82.97%	-89.83%	-62.28%										-76.72%	
	MoM	-52.19%	1.32%	331.34%											
營業收入淨額 (Unit:K) Sales Revenue (Net)	2011	209,742	223,404	305,271	274,414	286,890	261,800	223,126	196,322	195,986	186,312	178,488	738,417	100.0%	
	2012	174,201	204,241	250,809	0	0	0	0	0	0	0	0	629,251	100.0%	
	YoY	-16.95%	-8.58%	-17.84%										-14.78%	
	MoM	-2.40%	17.24%	22.80%											
營業收入淨額(系 計) Sales Revenue (Total)	2011	209,742	433,146	738,417	1,012,831	1,299,721	1,811,893	2,035,019	2,231,341	2,427,327	2,613,639	2,792,127	--	--	
	2012	174,201	378,442	629,251									--	--	
	YoY	-16.95%	-12.63%	-14.78%											
	MoM	180,325	173,481	247,218	226,590	240,746	214,967	213,209	194,314	177,310	181,264	180,572	168,006	601,024	
總計代工成長 OEM Growth (Total)	2011	169,190	199,164	228,910									597,264		
	2012	6.17%	14.80%	-7.41%											
	YoY	-6.17%	14.80%	-7.41%										-0.63%	
	MoM	0.70%	17.72%	14.94%											



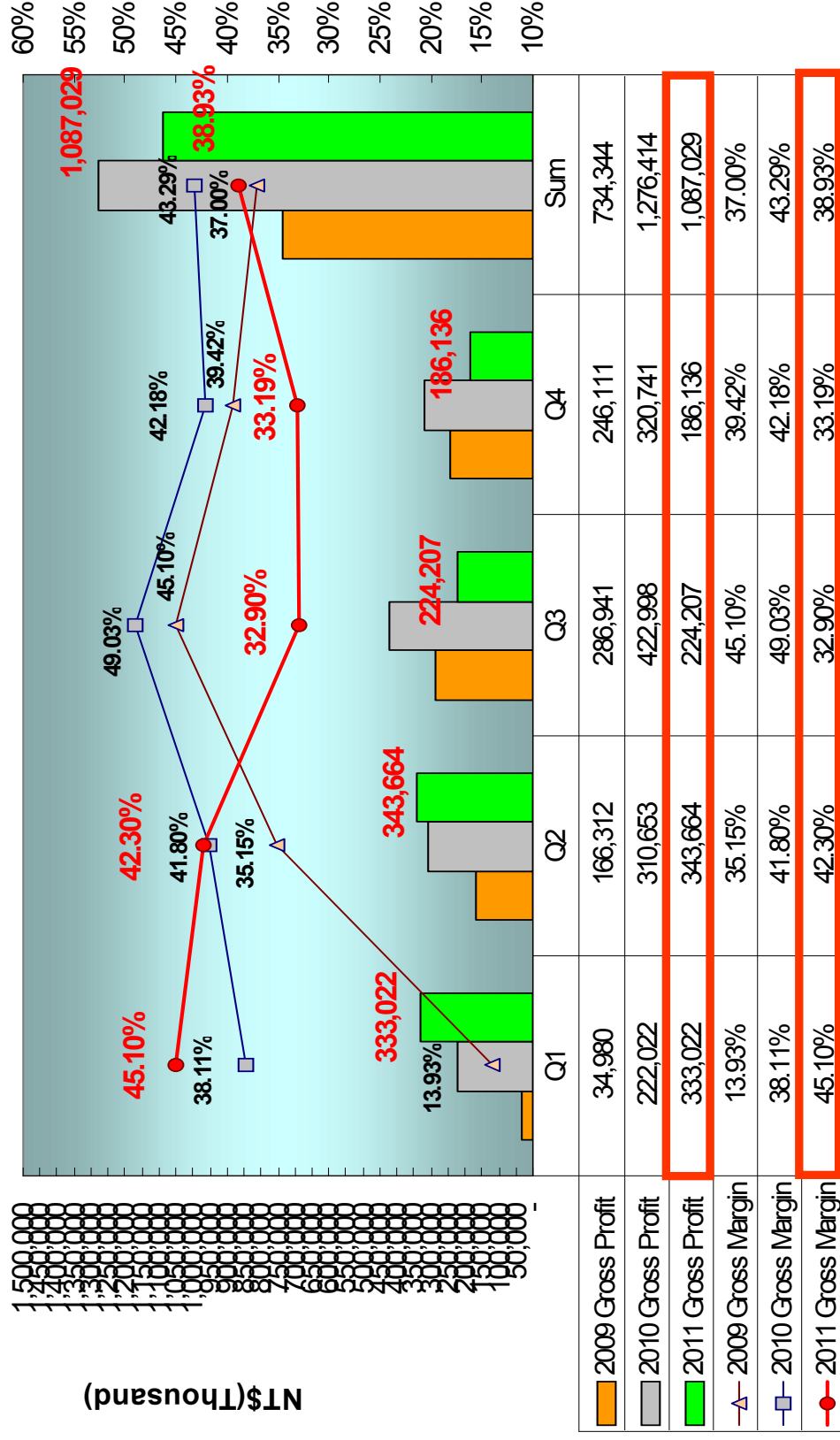
2002~2011 Revenue Growth

Company Profile



2010/2011 Gross Profit

Company Profile



Share payout composition and history

Company Profile

Year	93年度 (2004)	94年度 (2005)	95年度 (2006)	96年度 (2007)	97年度 (2008)	98年度 (2009)	99年度 (2010)	100年度 (2011)	101年度 (2012)(e)
	92年度 Profit(2003)	93年度 Profit(2004)	94年度 profit(2005)	95年度 Profit(2006)	96年度 Profit(2007)	97年度 Profit(2008)	98年度 Profit(2009)	99年度 Profit(2010)	100年度 Profit(2010)
Cash(NID)	\$3.00	\$3.00	\$2.61	\$4.00	\$4.00	\$3.00	\$3.00	\$4.67	\$5.50
Free Pair stock	\$2.00	\$2.00	\$0.87	\$1.00	\$0.50	\$0.10	\$0.10		
Stock Capital reserve fund	-	--	--	-	-	--	--	\$0.09	\$0.10
EPS(NID)	\$7.28	\$8.24	\$5.56	\$8.61	\$7.41	\$6.09	\$4.07	\$8.53	\$6.68

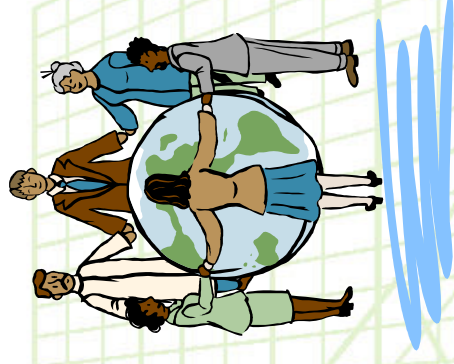


公司願景Company Mission

Company Profile

著眼於國內外市場的開拓，讓久元成爲立足台灣
的整合性後段IC及LED代工服務廠，並朝放眼
世界的自有產品、自有品牌邁進。

Based on the domestic and international marketing development, YTEC has gotten a foothold as an integrated back-end IC&LED OEM factory. YTEC moves forward, with it's own products, and Own Bench Marks.



YTEC YoungTek Electronics Corp.

Q & A

Company Profile

Thank you very much



YoungTek Electronics Corp.