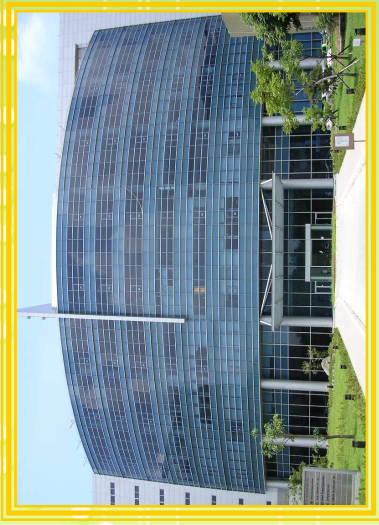
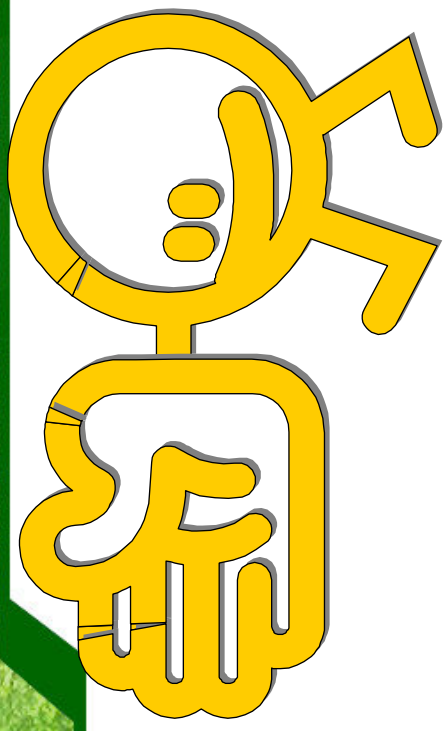


Welcome



Welcome

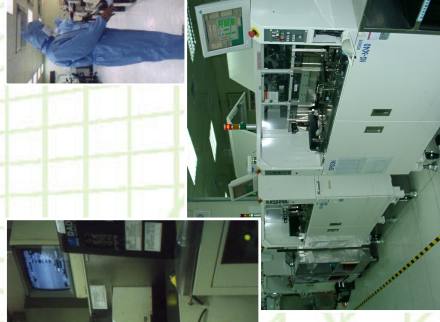


YoungTek Electronics Corp.

Stock No: 6261

Brief Introduction

Spokesman : Tony Liu
Date : 6 December, 2011



YTEC YoungTek Electronics Corp.

2011 VISIT SCHEDULE @久元

Company Profile

Contents

Time

- | | |
|---|-------------|
| <input type="checkbox"/> Brief Introduction of YTEC | 14:00~14:20 |
| <input type="checkbox"/> Q & A | 14:20~15:30 |
| <input type="checkbox"/> Line Tour (Free) | 15:30~16:00 |



YTEC YoungTek Electronics Corp.

Contents

Company Profile

- **Brief Introduction**
- **Factory Overview**
- **Company Milestone**
- **Company Management Concept**
- **OEM Services**
- **R&D Roadmap and Own Product Development**
- **Revenue Growth**
- **Company Mission**



YoungTek Electronics Corp.

Brief Introduction

Company Profile

Found Time : 1991/July

Chairman : Bily Wang

President of Service Group : Jeff Chang

President of Own Product Group : Glen Chen

Employees : 1010

Capital : NTD 1065 million (USD 35.5 million)

Address : Plant 1(1F~5F) : Special & substrate sawing

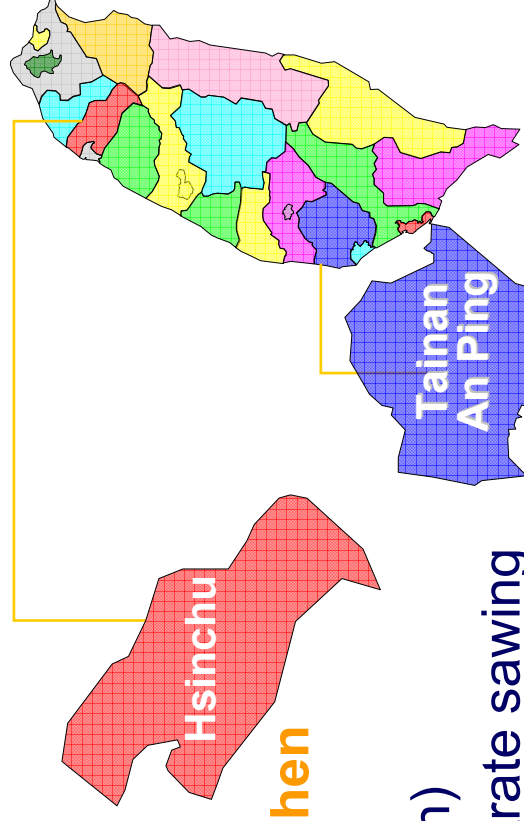
An Ping Plant (3F) : LED sorting & testing

Li Hsin Plant (2~3F、5~6F) : LED back-end turn-key service

SBIP Plant (1~4F、7F) : IC back-end turn-key service, ATE&AOI

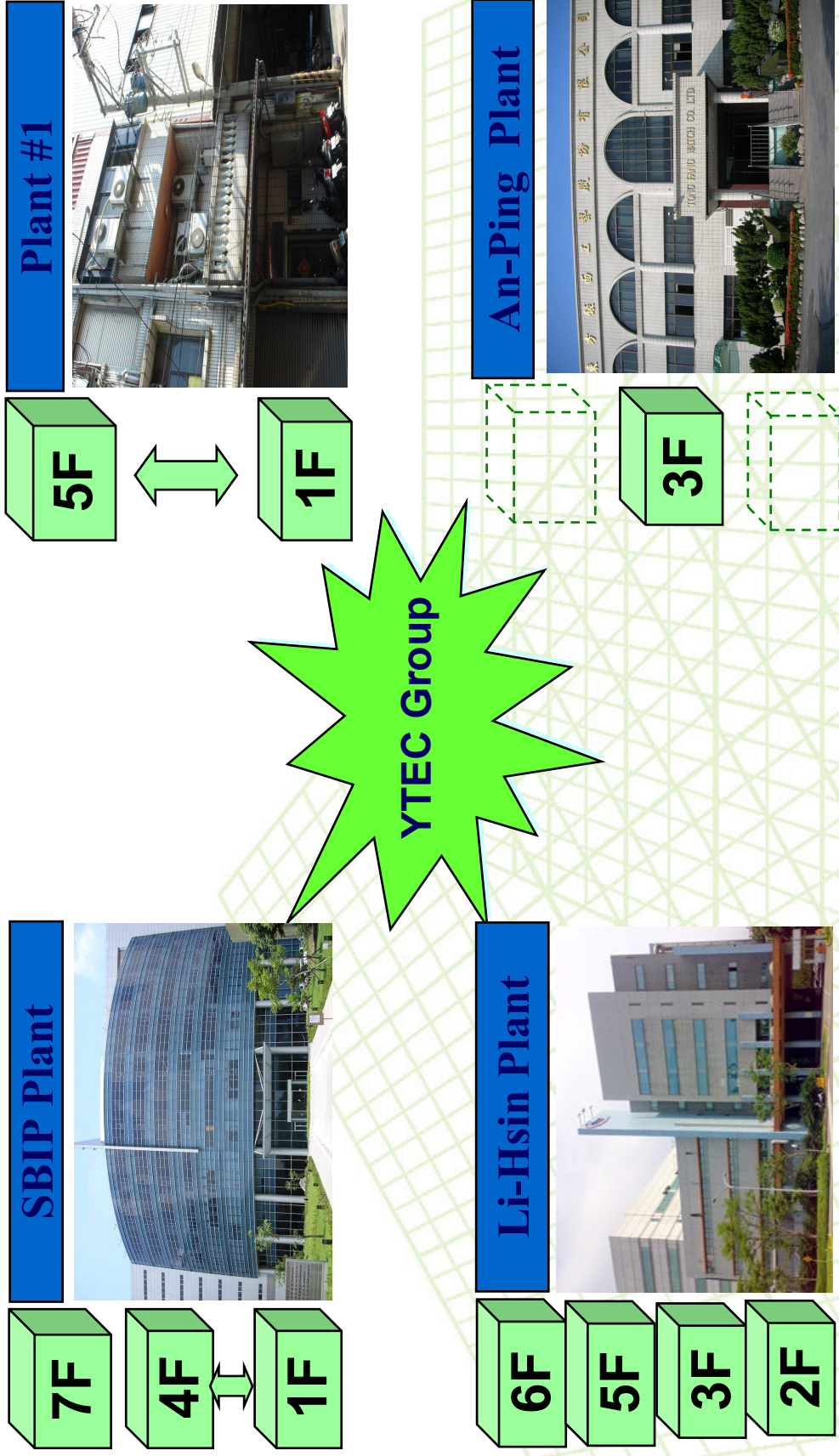
Business Items :

- Semiconductor and LED OEMs**: Wafer sawing, grinding, sorting and IC testing, LED testing, laser scribing, sorting and substrate sawing.
- Design, manufacture and sales of semiconductor equipments**: CIS/CCM equipments, AOI system, full-function IC tester, logic IC tester, analog IC tester, Mixed-Signal IC Tester, **LED** tester, prober and sorter.



Factory Overview

Company Profile



YoungTek Electronics Corp.

Company Milestone

Company Profile

- 1991/Jul. YTEC was founded and the capital is NTD \$ 5 million.
- 1998/Oct. Develop logic tester (Goblin) with 5 MHz/40 pins.
- 2000/Mar. Achieved the certification of ISO 9001
- 2000/Jul. Full-function IC tester was verified by industry agency with predominant product development project.
- 2002/Nov. SEC (Securities and Exchange Commission) approve YTEC to public stock.
- 2003/Nov. LED OEM service was established.
- 2003/Dec. Obtain OTC certification.
- 2004/Mar. Got the approval to establish the branch in Hsin chu SBIP.
- 2004/Mar.29 Listed in Taiwan stock exchange. (Stock No.: 6261)
- 2006/Dec. Achieved the certification of ISO 14001 and OHSAS 18001.
- 2007/Jul. Develop Tainan An Ping plant for LED sorting.
- 2007/Nov. Build up AOI key technologies and business.
- 2008/May Develop Li Hsin plant for LED test & sorting.
- 2008/Otc. Achieved the certification of ISO/TS 16949.
- 2009/Jun. Solar silicon substrate inspection system was verified by Science Park Administration with development project.
- 2010/Mar. Develop SBIP plant for wafer grinding & sawing.
- 2011/Jan. Achieved the certification of IECQ QC080000.



YTEC YoungTek Electronics Corp.

Company Management Concept

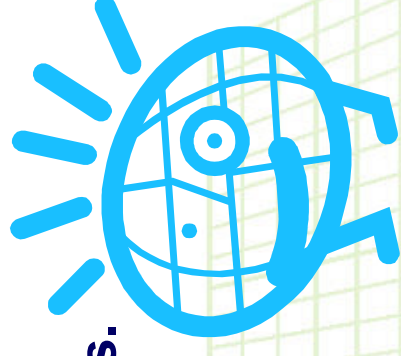
Company Profile

經營理念：(Management Concept)

主人翁經營理念；下工程即是客戶。

Treat YTEC as your own company. (Host concept)

Treat all post projects and processes as our customers.



工作態度：(Working Attitude)

成功者找方法；失敗者找藉口。

A successful person will find the way to overcome a challenge

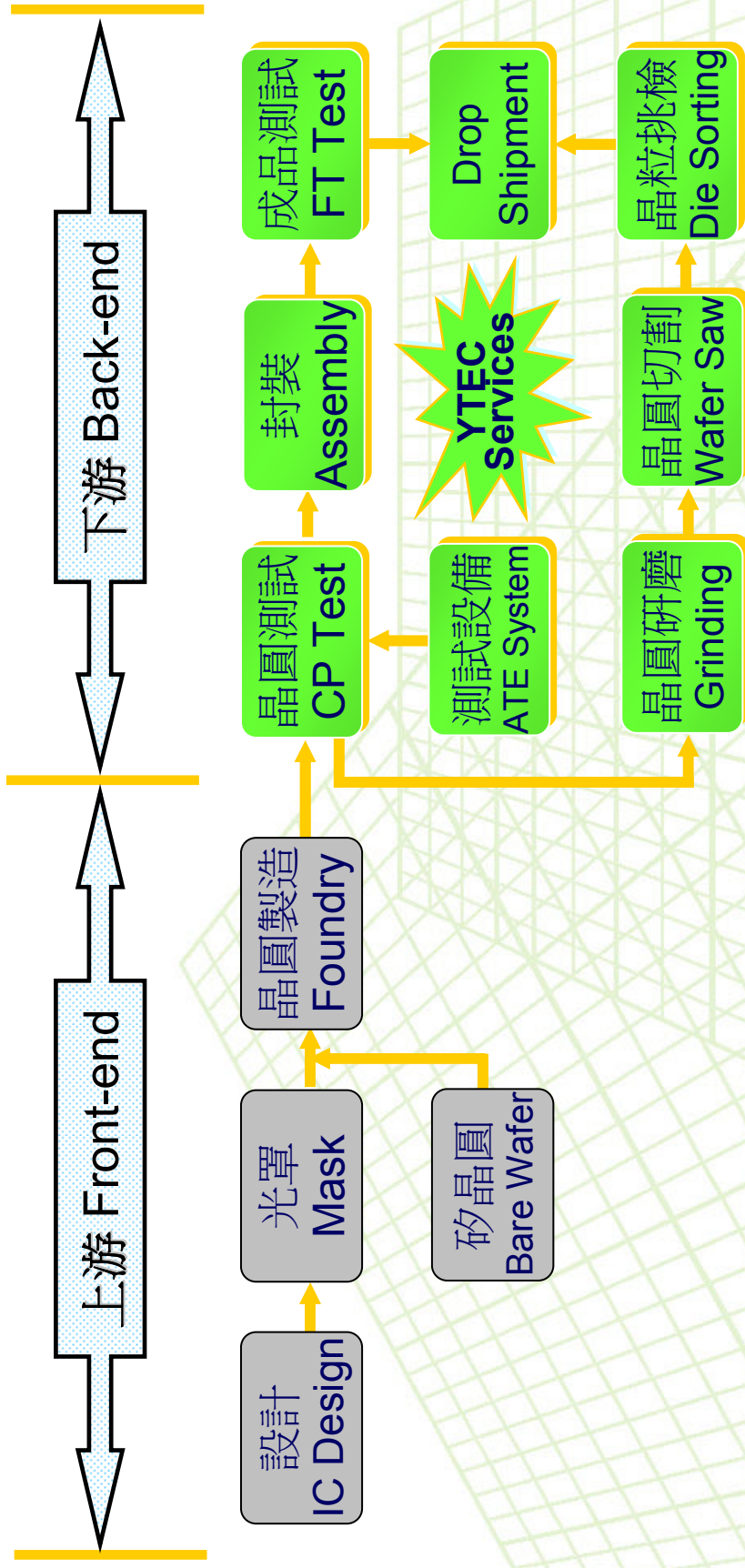
Loser finds excuses.



YTEC YoungTek Electronics Corp.

IC OEM Services

Company Profile

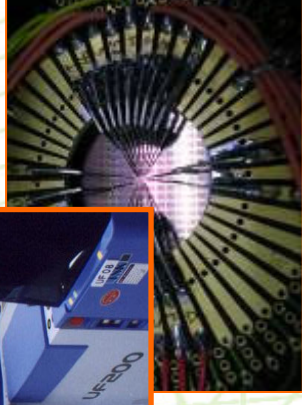
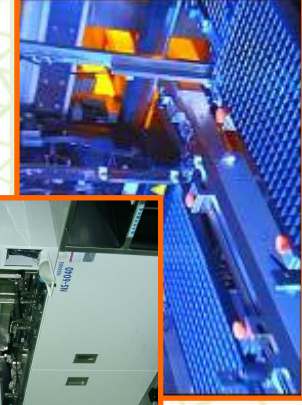
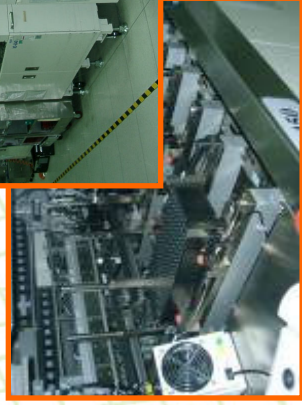
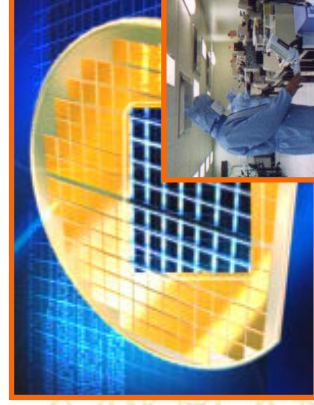
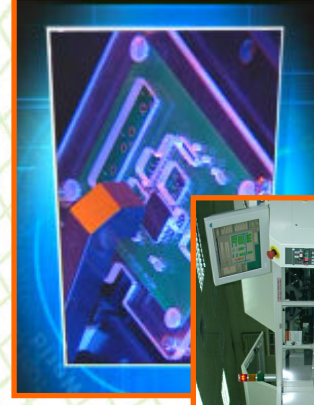
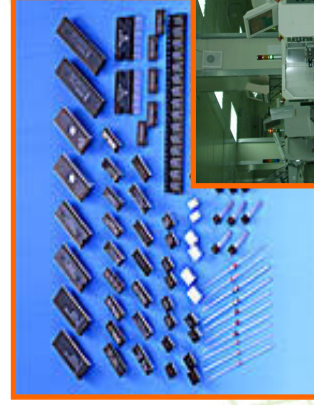


YoungTek Electronics Corp.

專業測試代工服務(IC Testing OEM)

Company Profile

- ❑ 4"~12" Wafer testing (CP)、Test program and test kit development (Probe-card design and manufacture).
- ❑ IC packaging testing (FT)、Package type : DIPs、T/SOPs、L/QFPs、QFN、L/BGA...
- ❑ PC peripheral product、Logic、Analog、Mixed-signal、No-volatile memory、MCU、LCD driver IC、High speed/ High pin count (Scud-1A 512C) testing.
- ❑ CIS(CMOS Image Sensor)、RF、SoC product testing
- ❑ Others : Laser trimming、Lead scanning、Test program and test kit development technical support **Turn-key service** (For example: PKG assembly、Tape-reel、Drop-shipment...).



研磨、切割及挑檢代工服務 (Grinding, Sawing, P&P Service)

Company Profile

□ Service Items:

Wafer back-side grinding sawing chip pick & place services for Consumer and gold bump products.

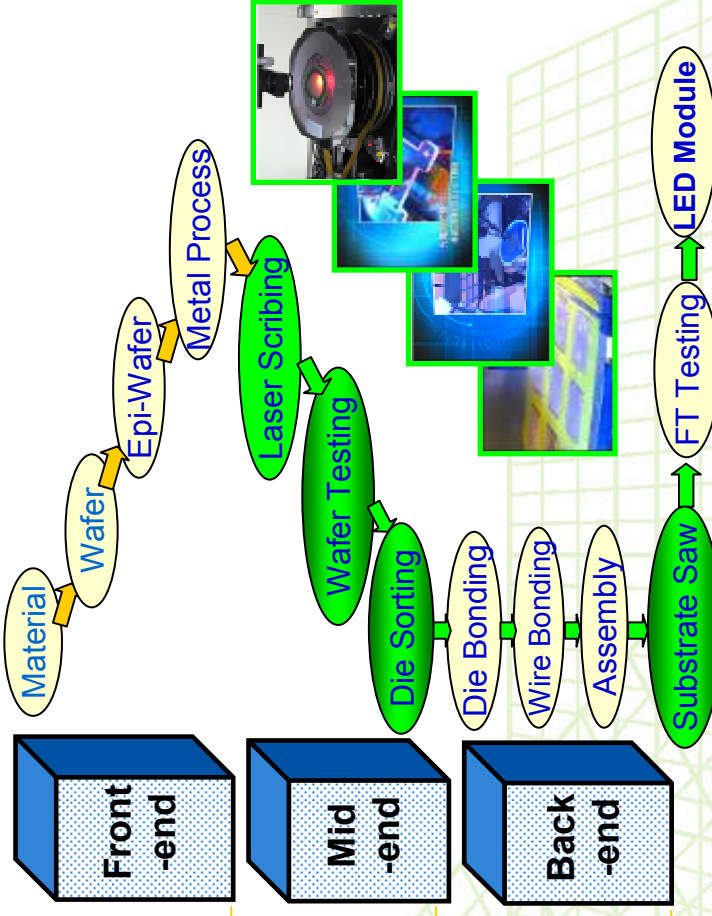
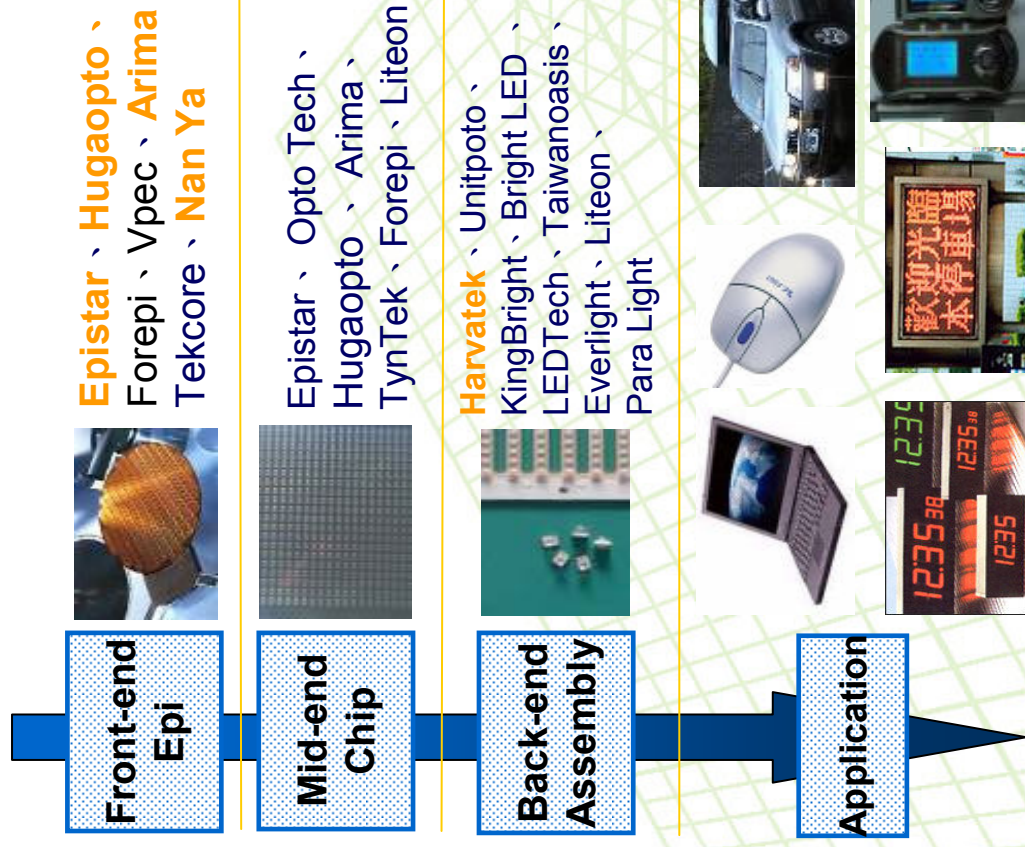
Process	Back-side Grinding	Sawing	Pick & Place
Environment	 <p>Class 1K</p>	 <p>Class 1K</p>	 <p>Class 100</p>
Capability	<ul style="list-style-type: none"> ● 4"~12" Wafer ● Back-side Grinding ● 8"~12" Wafer ● Polish Solution ● Wafer TTV $\leq 5 \mu m$ ● Chip TTV $\leq 2 \mu m$ 	<ul style="list-style-type: none"> ● 4"~12" Wafer Sawing ● Dual Cutting Function ● High-pressure & Atomizing Cleaning System (二流體清洗裝置) ● Dust Collecting System 	<ul style="list-style-type: none"> ● 4"~12" Wafer Pick & Place ● Map and Ink ● Pick & Place Solution ● Chip Back-side AOI Inspection System



YoungTek Electronics Corp.

LED OEM Services

Company Profile



- **Front-end Product** : Wafer, Epi-Wafer, For example GaAs, GaAsP, AlGaAs, AlGaInP
- **Mid-end Product** : Laser Scribing, Wafer Testing and Pick & Place Die-sorting
- **Back-end Product** : Lamp, Display, SMD, IR transmission module, Optical Communication product, Substrate Saw



YoungTek Electronics Corp.



Company Profile

Own Product Development



YTEC YoungTek Electronics Corp.

Own Product Development

Company Profile

- YT5100 High Speed SOC IC Tester
YT5100 全功能高速SOC IC測試機
- Scud-1A 512C full-function IC Tester
Scud-1A 512C 全功能 IC 測試機
- CIS(CMOS Image Sensor System)
CMOS影像感測系統
- HV LED Tester
全功能 LED 測試機



YoungTek Electronics Corp.

Own Product Development

Company Profile

□CCM (CMOS/Compact Camera Module)

影像感測模組測試設備

□AOI (Auto optical Inspection)

自動光學檢測系統

□YT2500 Multi Station Dual Feeding LED Dispenser

YT2500 多站雙軌 LED 點膠機

□YT6110 IC Test Handler

YT6110 IC 測試分類機



YTEC YoungTek Electronics Corp.

YT5100&Scud-1A IC Tester

Company Profile

YT5100 High Speed Soc IC Tester



Scud-1A Fully Auto IC Tester



Scud-1A IC Tester System Environment

Company Profile

The screenshots illustrate the following components of the Scud-1A IC Tester system environment:

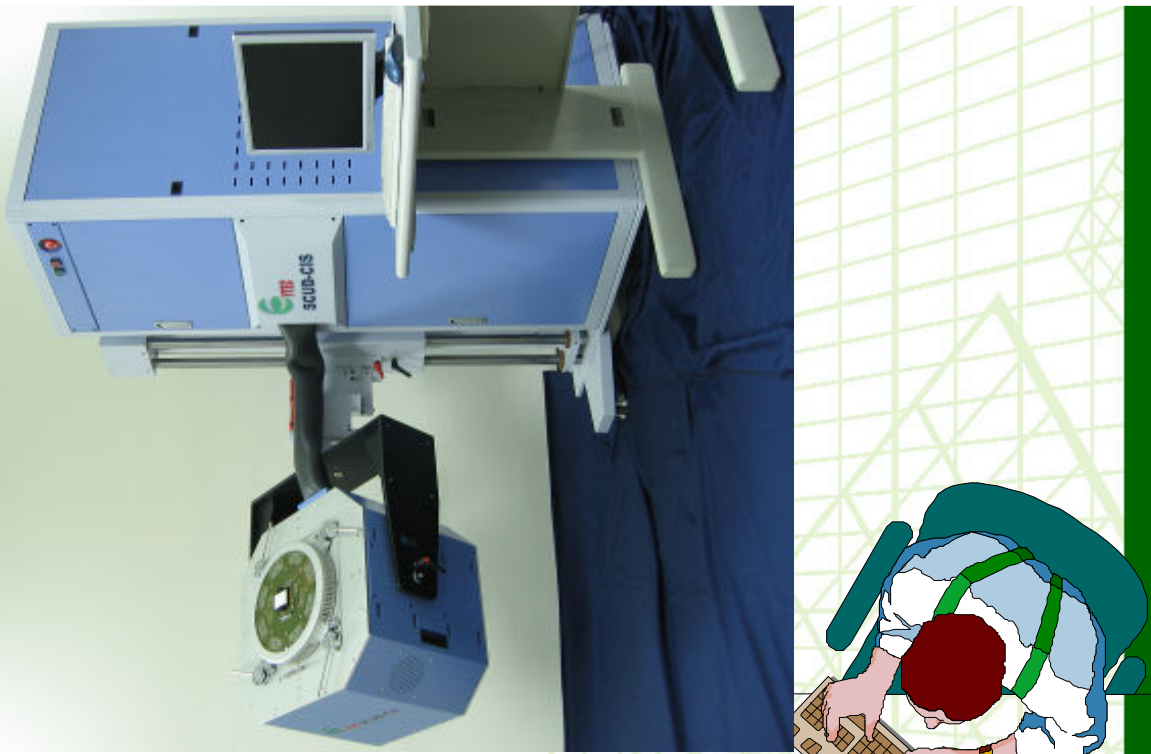
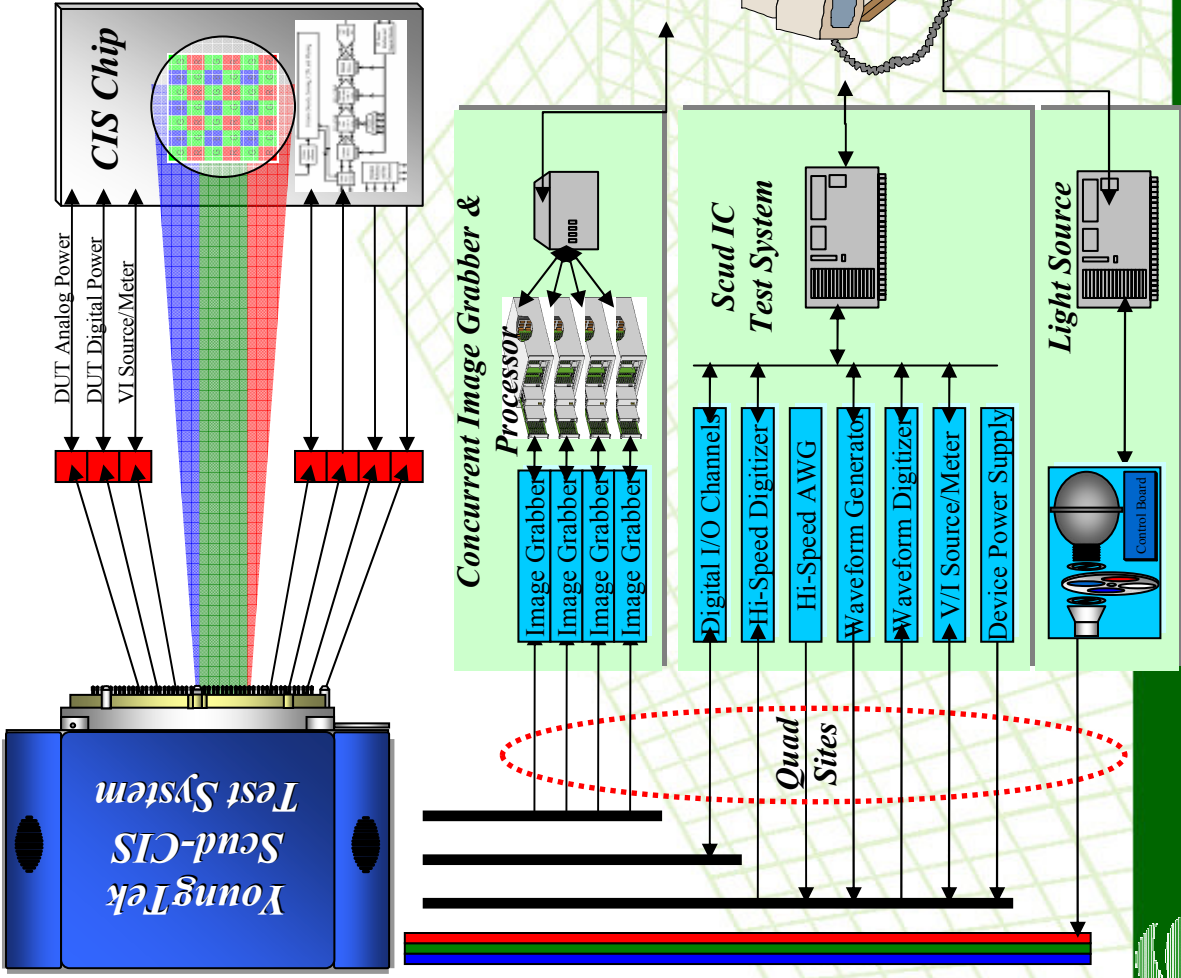
- TEST PROGRAM ZIP2:** A window for loading and configuring test programs, showing fields for program name, location, and test parameters.
- PIN_GRID Form:** A window for defining test parameters, including a table for pin grid settings:

Pin	Dir	Level	Time	Unit	
1	0	2.500V	3.000V	1000V	ON
2	0	2.500V	3.000V	1000V	ON
3	0	2.500V	3.000V	1000V	ON
4	0	2.500V	3.000V	1000V	ON
5	0	2.500V	3.000V	1000V	ON
6	0	2.500V	3.000V	1000V	ON
7	0	2.500V	3.000V	1000V	ON
8	0	2.500V	3.000V	1000V	ON
9	0	2.500V	3.000V	1000V	ON
10	0	2.500V	3.000V	1000V	ON
11	0	2.500V	3.000V	1000V	ON
12	0	2.500V	3.000V	1000V	ON
13	0	2.500V	3.000V	1000V	ON
14	0	2.500V	3.000V	1000V	ON
15	0	2.500V	3.000V	1000V	ON
16	0	2.500V	3.000V	1000V	ON
17	0	2.500V	3.000V	1000V	ON
18	0	2.500V	3.000V	1000V	ON
19	0	2.500V	3.000V	1000V	ON
20	0	2.500V	3.000V	1000V	ON
21	0	2.500V	3.000V	1000V	ON
22	0	2.500V	3.000V	1000V	ON
23	0	2.500V	3.000V	1000V	ON
24	0	2.500V	3.000V	1000V	ON
25	0	2.500V	3.000V	1000V	ON
26	0	2.500V	3.000V	1000V	ON
27	0	2.500V	3.000V	1000V	ON
28	0	2.500V	3.000V	1000V	ON
29	0	2.500V	3.000V	1000V	ON
30	0	2.500V	3.000V	1000V	ON
31	0	2.500V	3.000V	1000V	ON
32	0	2.500V	3.000V	1000V	ON
33	0	2.500V	3.000V	1000V	ON
34	0	2.500V	3.000V	1000V	ON
35	0	2.500V	3.000V	1000V	ON
36	0	2.500V	3.000V	1000V	ON
37	0	2.500V	3.000V	1000V	ON
38	0	2.500V	3.000V	1000V	ON
39	0	2.500V	3.000V	1000V	ON
40	0	2.500V	3.000V	1000V	ON
41	0	2.500V	3.000V	1000V	ON
42	0	2.500V	3.000V	1000V	ON
43	0	2.500V	3.000V	1000V	ON
44	0	2.500V	3.000V	1000V	ON
45	0	2.500V	3.000V	1000V	ON
46	0	2.500V	3.000V	1000V	ON
47	0	2.500V	3.000V	1000V	ON
48	0	2.500V	3.000V	1000V	ON
49	0	2.500V	3.000V	1000V	ON
50	0	2.500V	3.000V	1000V	ON
51	0	2.500V	3.000V	1000V	ON
52	0	2.500V	3.000V	1000V	ON
53	0	2.500V	3.000V	1000V	ON
54	0	2.500V	3.000V	1000V	ON
55	0	2.500V	3.000V	1000V	ON
56	0	2.500V	3.000V	1000V	ON
57	0	2.500V	3.000V	1000V	ON
58	0	2.500V	3.000V	1000V	ON
59	0	2.500V	3.000V	1000V	ON
60	0	2.500V	3.000V	1000V	ON
61	0	2.500V	3.000V	1000V	ON
62	0	2.500V	3.000V	1000V	ON
63	0	2.500V	3.000V	1000V	ON
64	0	2.500V	3.000V	1000V	ON
65	0	2.500V	3.000V	1000V	ON
66	0	2.500V	3.000V	1000V	ON
67	0	2.500V	3.000V	1000V	ON
68	0	2.500V	3.000V	1000V	ON
69	0	2.500V	3.000V	1000V	ON
70	0	2.500V	3.000V	1000V	ON
71	0	2.500V	3.000V	1000V	ON
72	0	2.500V	3.000V	1000V	ON
73	0	2.500V	3.000V	1000V	ON
74	0	2.500V	3.000V	1000V	ON
75	0	2.500V	3.000V	1000V	ON
76	0	2.500V	3.000V	1000V	ON
77	0	2.500V	3.000V	1000V	ON
78	0	2.500V	3.000V	1000V	ON
79	0	2.500V	3.000V	1000V	ON
80	0	2.500V	3.000V	1000V	ON

- Test Pattern Grid:** A visual representation of the test pattern on a grid, with red and green squares indicating test points.
- Test Results:** A window displaying test results, including a table of test results and a summary of test statistics.
- Waveform Analysis:** A window showing waveforms for various test parameters, allowing for detailed analysis of the test results.

CIS(CMOS Image Sensor) IC Tester

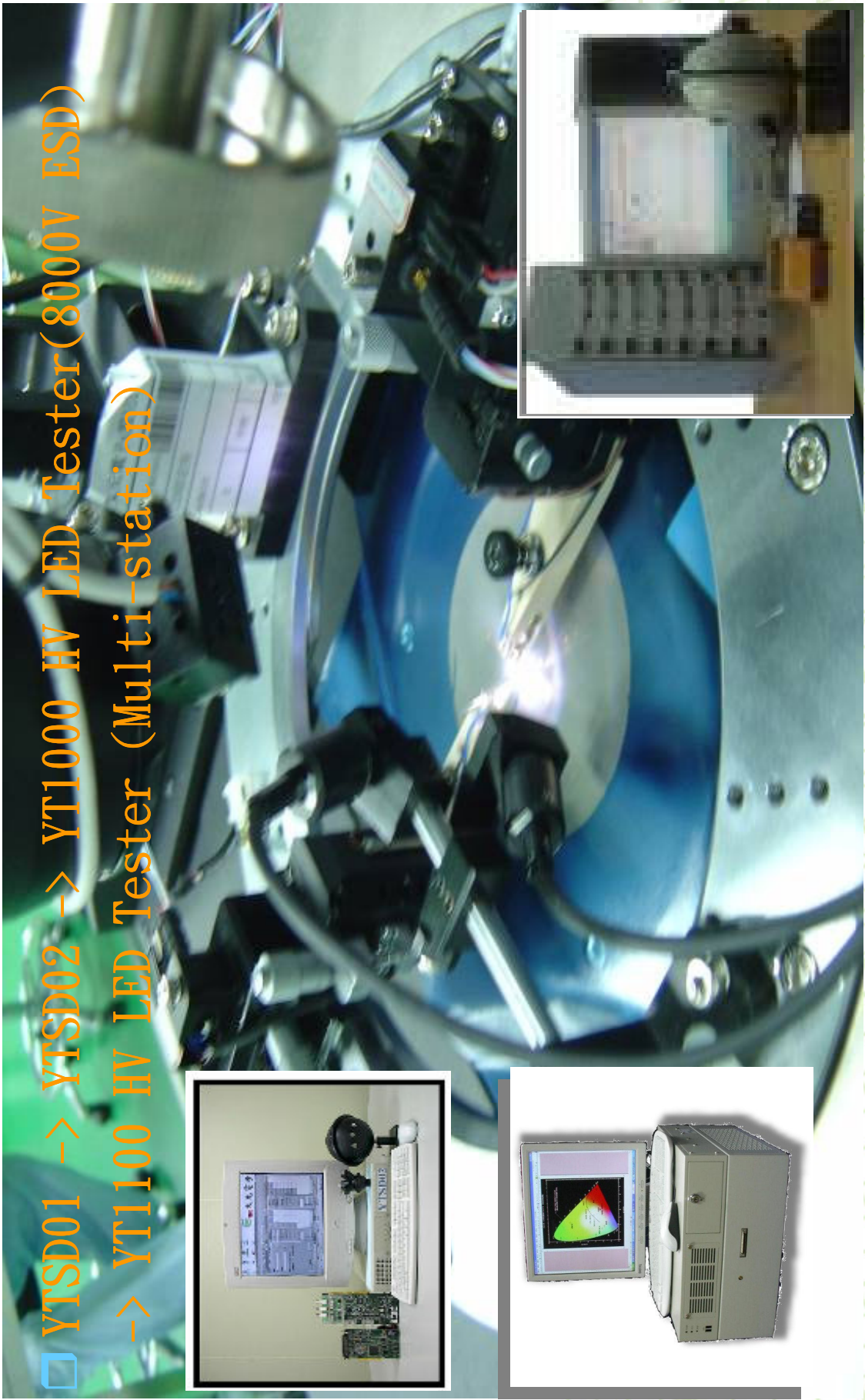
Company Profile



YT1100 LED Tester(YT1100 LED 測試機)

Company Profile

- YTSD01 -> YTSD02 -> YT1000 HV LED Tester(8000V ESD)
- > YT1100 HV LED Tester (Multi-station)

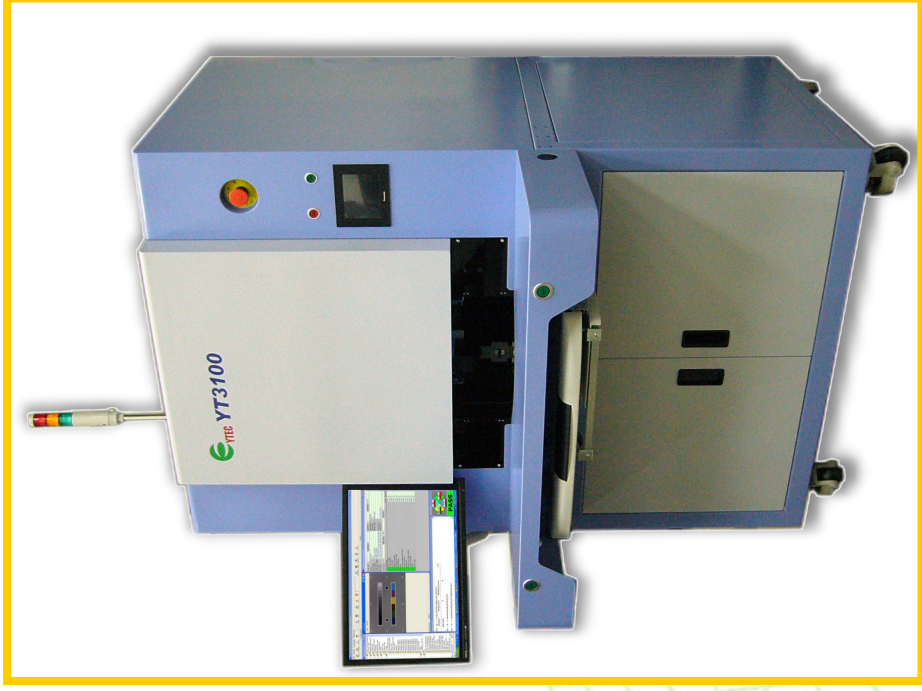


YoungTek Electronics Corp.

CCM(CMOS/Compact Camera Module)

Company Profile

CCM Test System YT3100



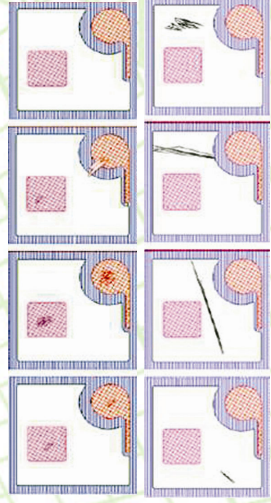
Fully Auto CCM Test System YT3300



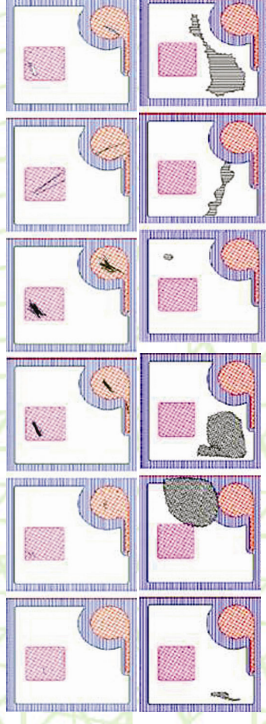
Auto Optical Inspection (自動光學檢測系統)

Company Profile

**YT 5311 LED Chip/Wafer/Mask
AOI System**



**YT 2800 LED Chip/Wafer/Mask
AOI System**

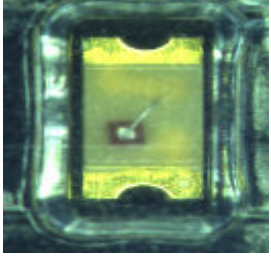
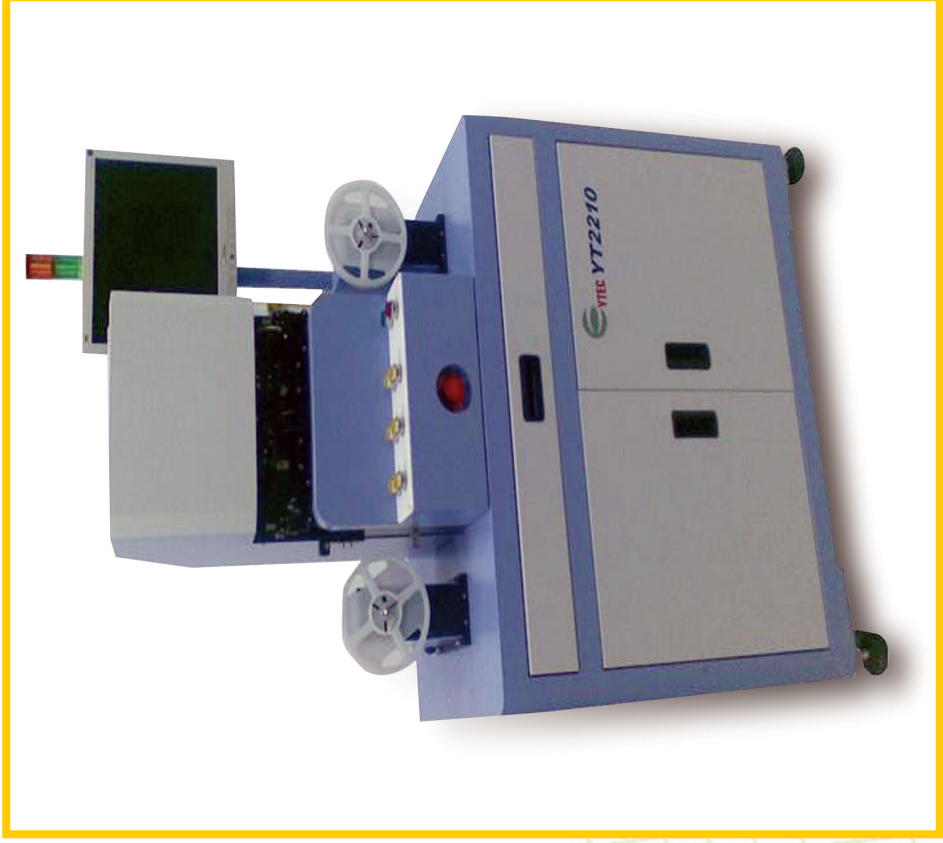


YoungTek Electronics Corp.

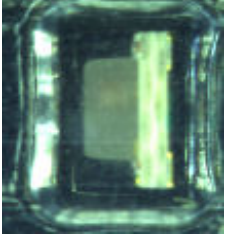
Auto Optical Inspection (自動光學檢測系統)

Company Profile

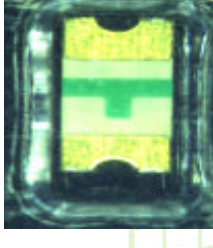
YT 2210 Reel Type Components AOI System



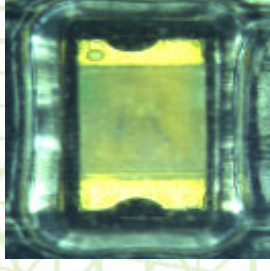
Polarity inverse package



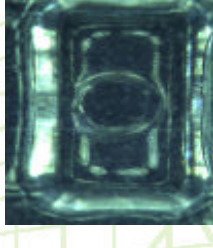
Tilt



Over turn



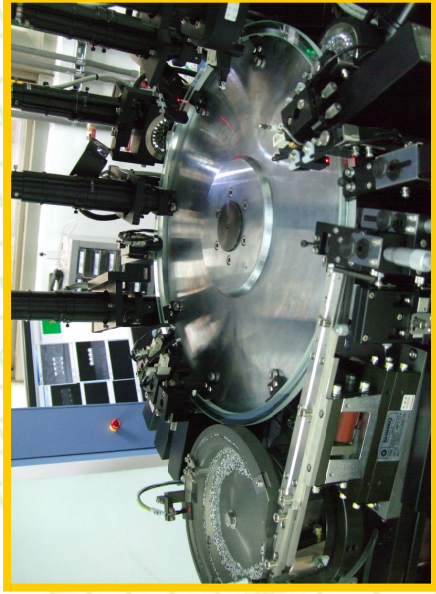
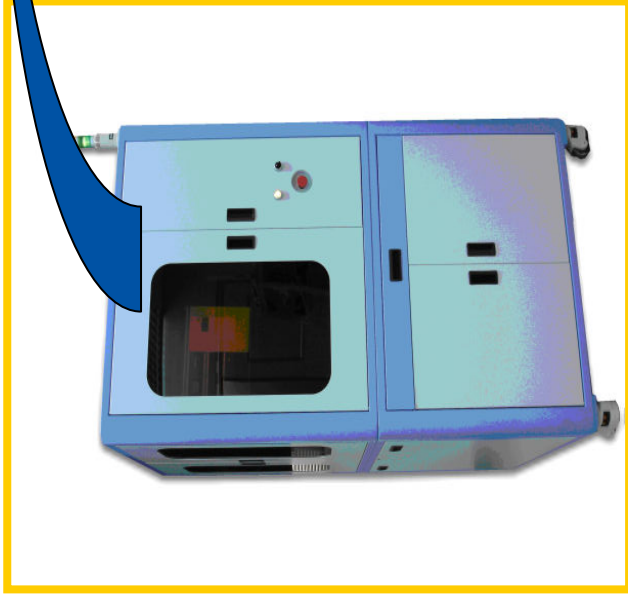
Mixed package



Empty

Auto Optical Inspection Application

Company Profile



Reel type taped products:

- Resistor
- Capacitor
- Inductor
- LED
- IC
- Relay
- Connector
- Fuse



YoungTek Electronics Corp.

YT2500 LED Dispenser / YT6110 IC Test Handler

Company Profile

YT2500 LED Dispenser



YT6110 IC Test Handler



YoungTek Electronics Corp.



Company Profile

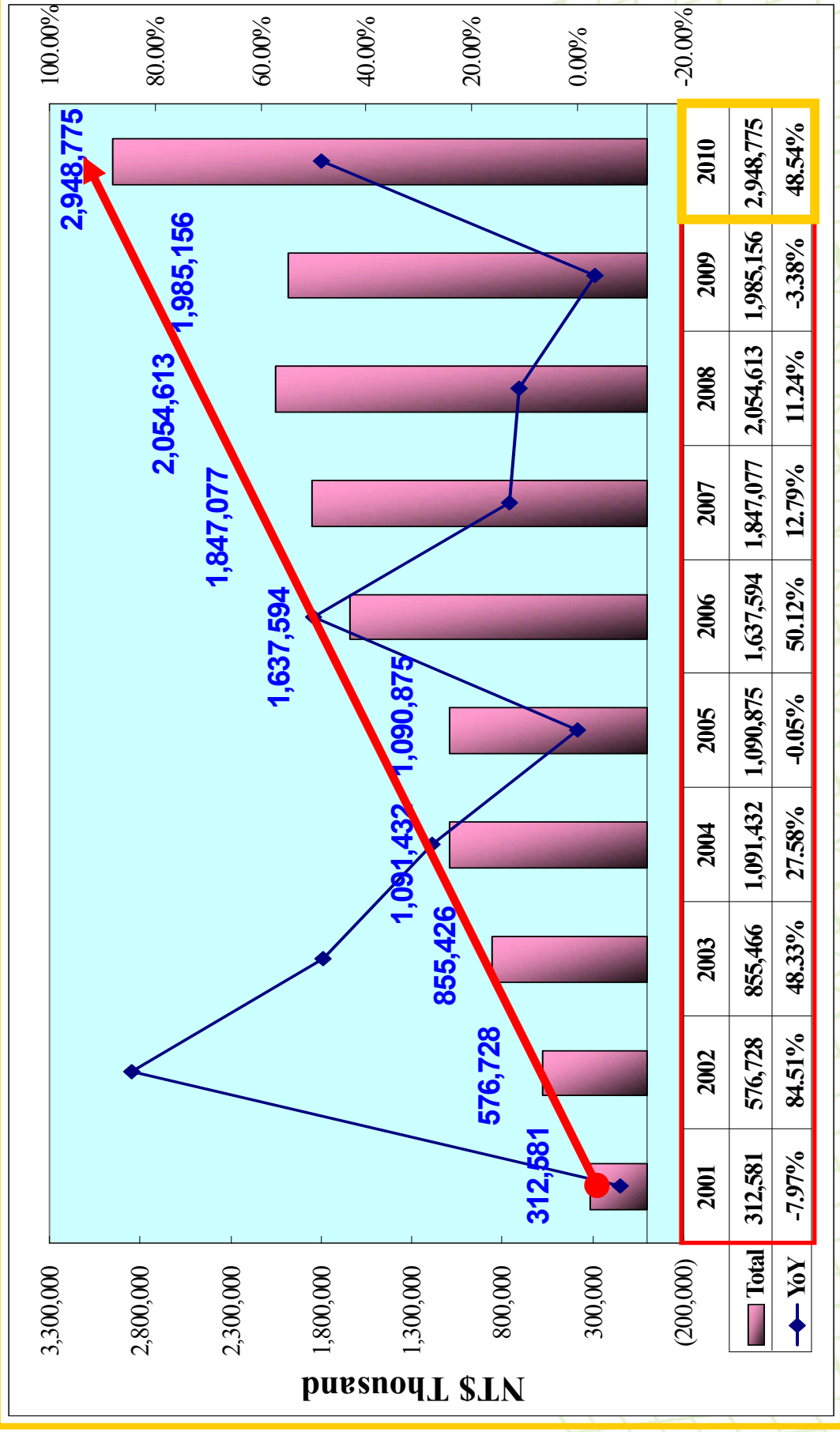
Revenue Growth



YTEC YoungTek Electronics Corp.

2001~2010 Revenue Growth

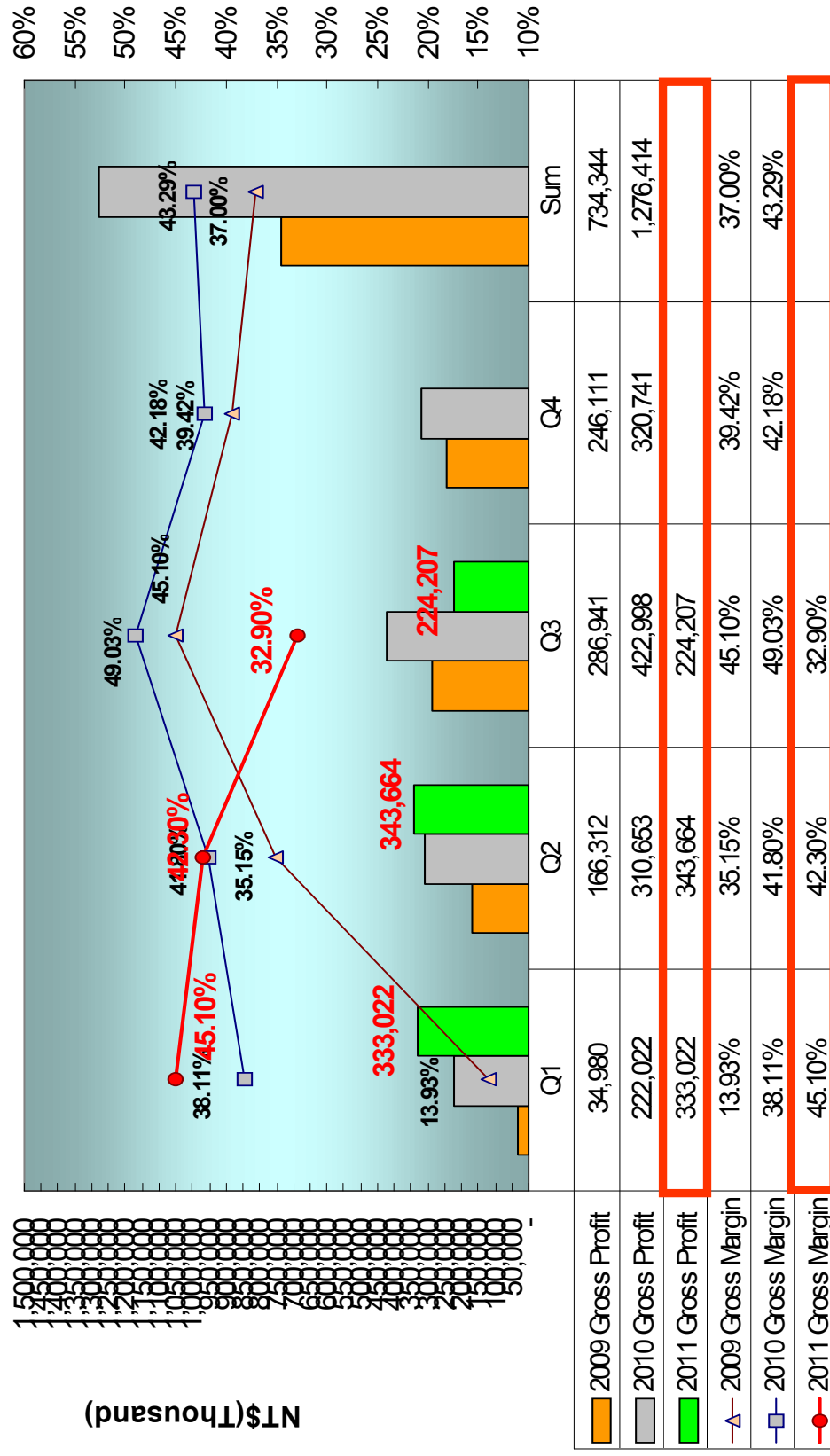
Company Profile



YoungTek Electronics Corp.

2010/2011 Gross Profit

Company Profile



Share payout composition and history

Company Profile

Year	九十三年度 (2004)	九十四年度 (2005)	九十五年度 (2006)	九十六年度 (2007)	九十七年度 (2008)	九十八年度 (2009)	九十九年度 (2010)	100年度 (2011)
	配九十二年 Profit(2003)	配九十三年 Profit(2004)	配九十四年 profit(2005)	配九十五年 Profit(2006)	配九十六年 Profit(2007)	配九十七年 Profit(2008)	配九十八年 Profit(2009)	配九十九年 Profit(2010)
Cash(NID)	\$3.00	\$3.00	\$2.61	\$4.00	\$4.00	\$3.00	\$3.00	\$4.67
Free Pair stock	\$2.00	\$2.00	\$0.87	\$1.00	\$0.50	\$0.10	\$0.10	
Stock Capital reserve fund	-	-	-	-	--	-	--	\$0.09
EPS(NID)	\$7.28	\$8.24	\$5.56	\$8.61	\$7.41	\$6.09	\$4.07	\$8.53

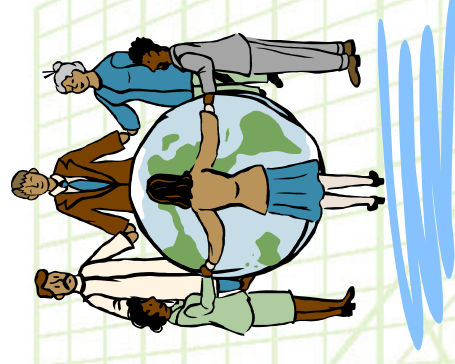


公司願景Company Mission

Company Profile

著眼於國內外市場的開拓，讓久元成爲立足台灣
的整合性後段IC及LED代工服務廠，並朝放眼
世界的自有產品、自有品牌邁進。

Based on the domestic and international marketing development, YTEC has gotten a foothold as an integrated back-end IC&LED OEM factory. YTEC moves forward, with it's own products, and Own Bench Marks.



YTEC YoungTek Electronics Corp.

Q & A

Company Profile

Thank you very much



YoungTek Electronics Corp.